

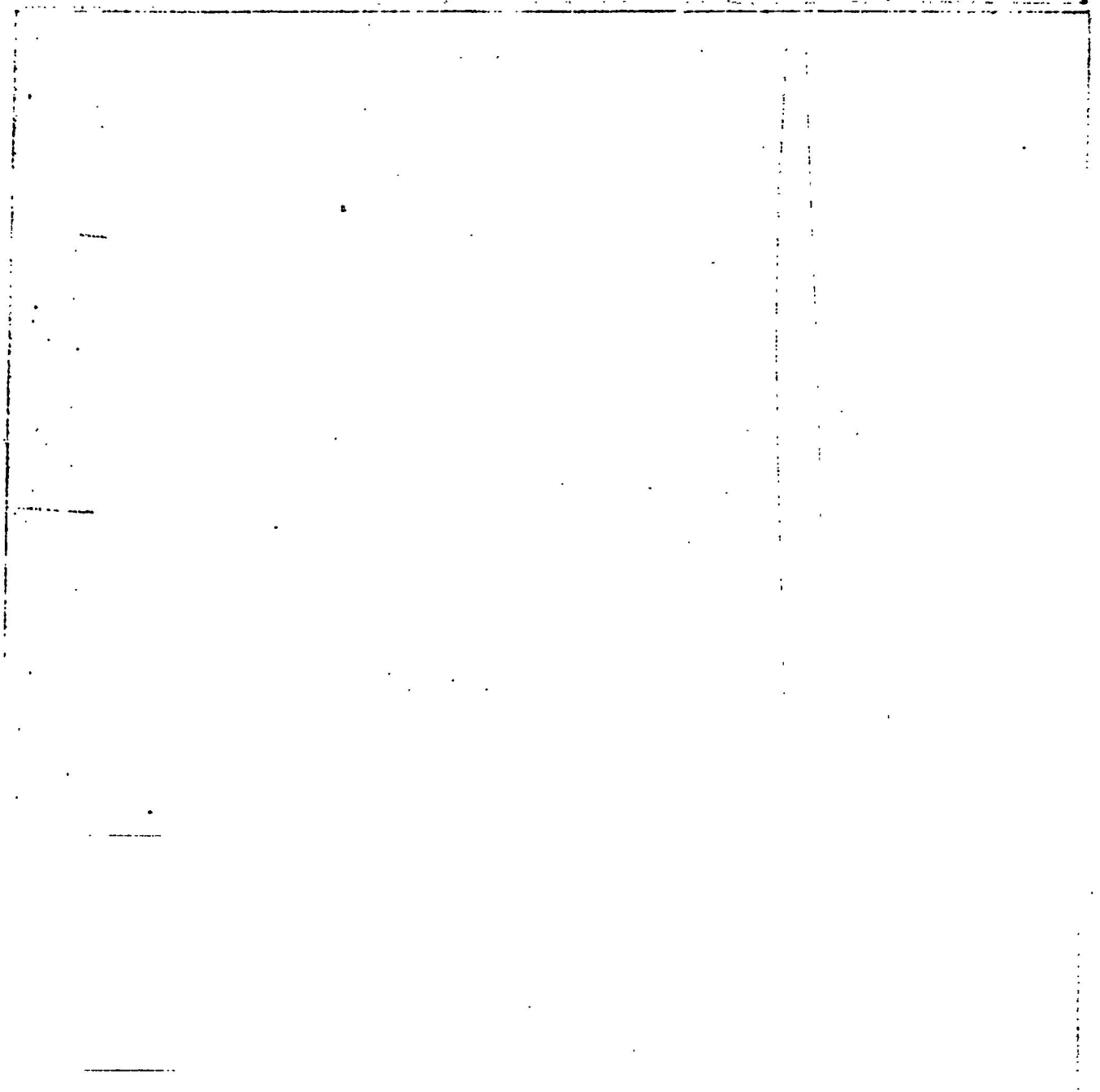




Vertical text on the left margin, possibly a page number or reference code.

Main body of text, consisting of several lines of faint, illegible characters.

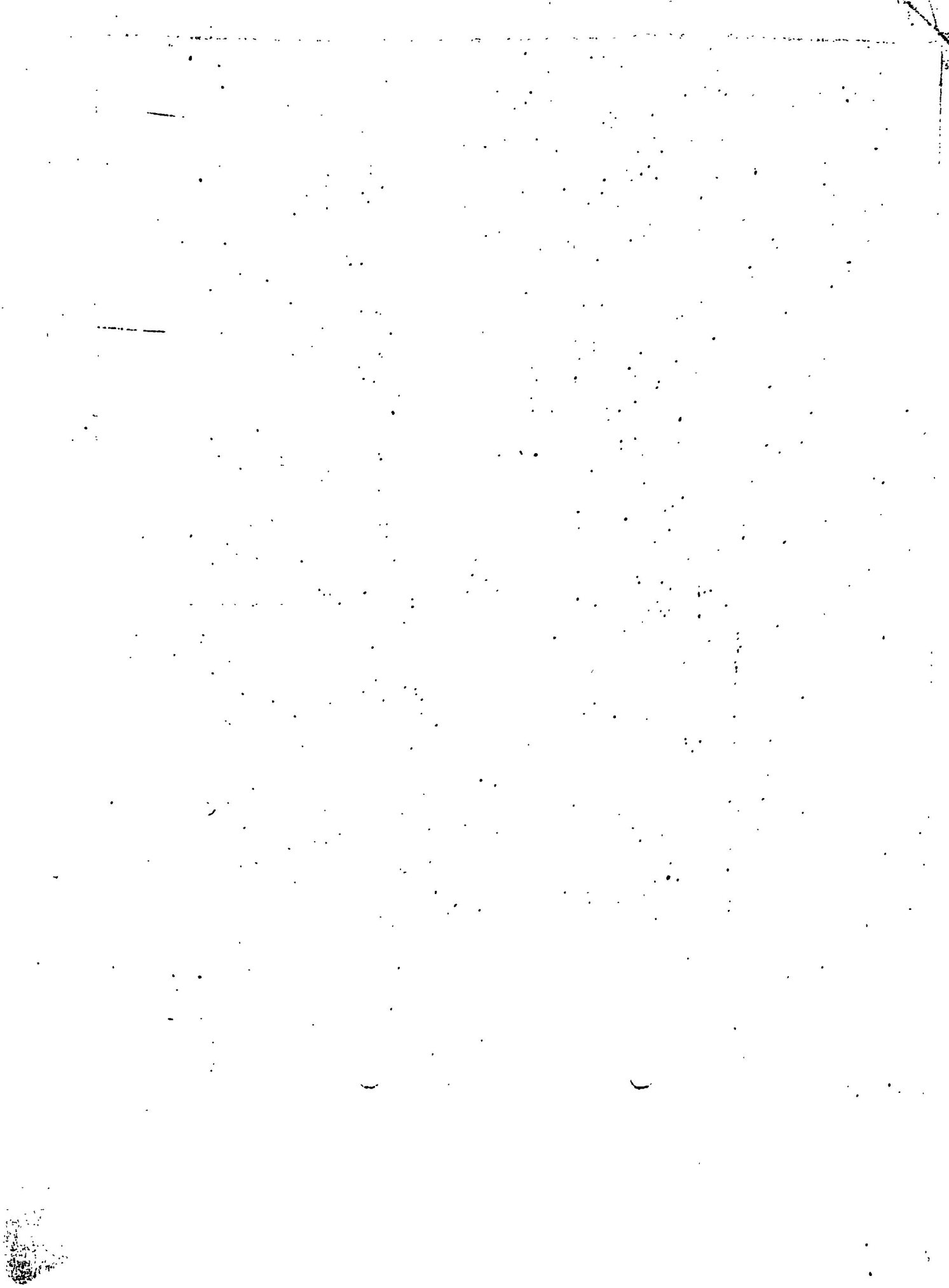
Horizontal line of text at the bottom of the page, possibly a footer or a separator.



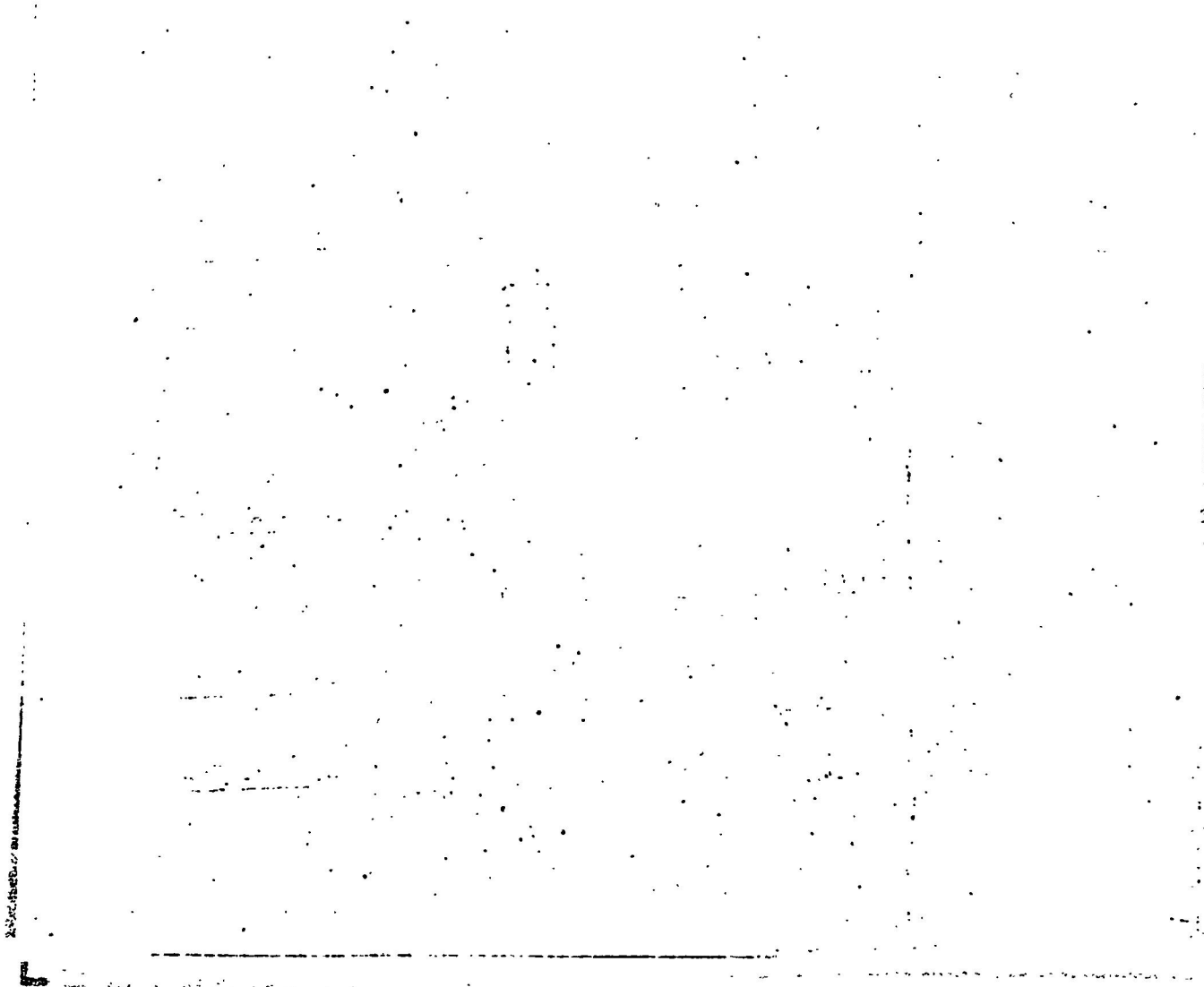
U

I



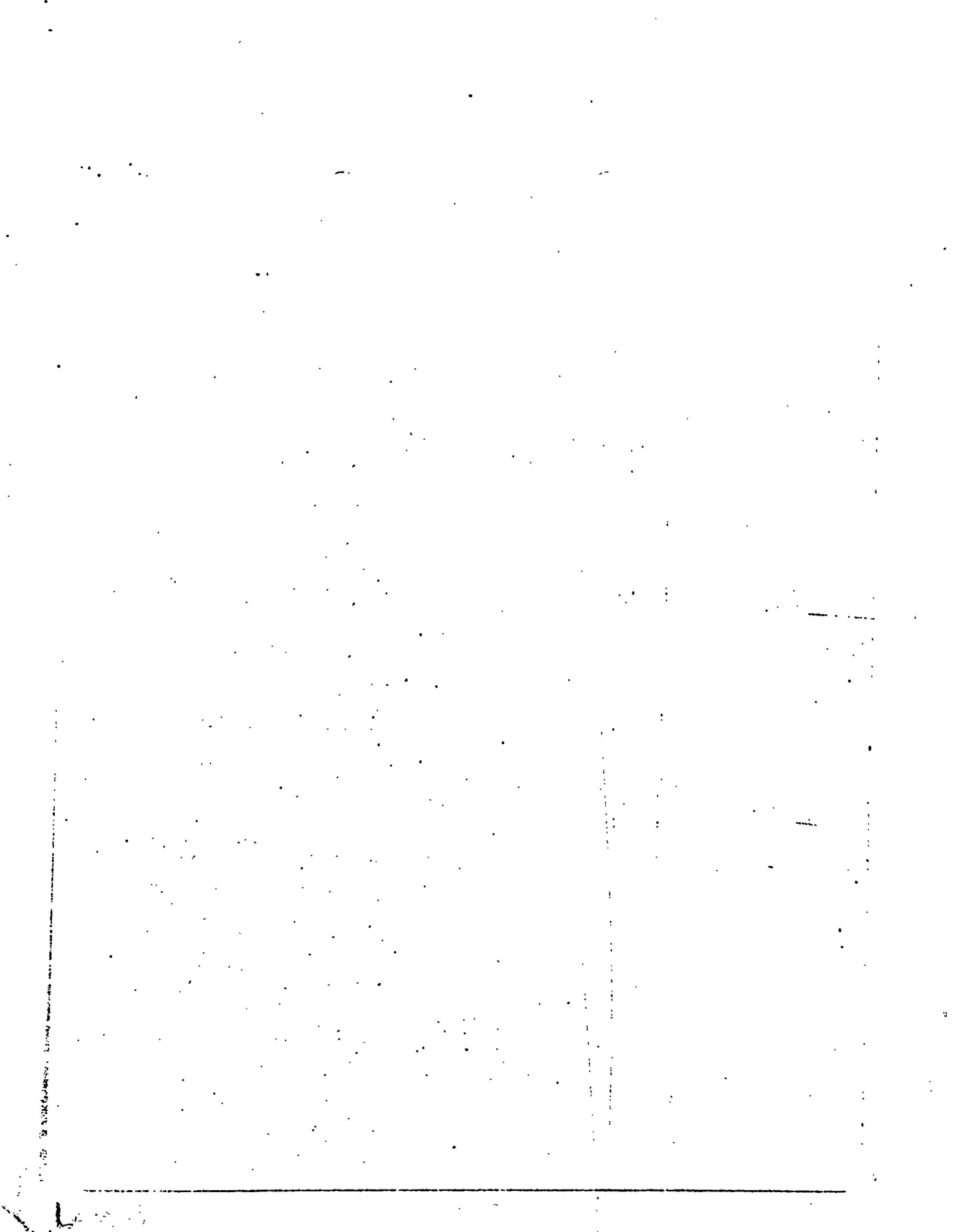






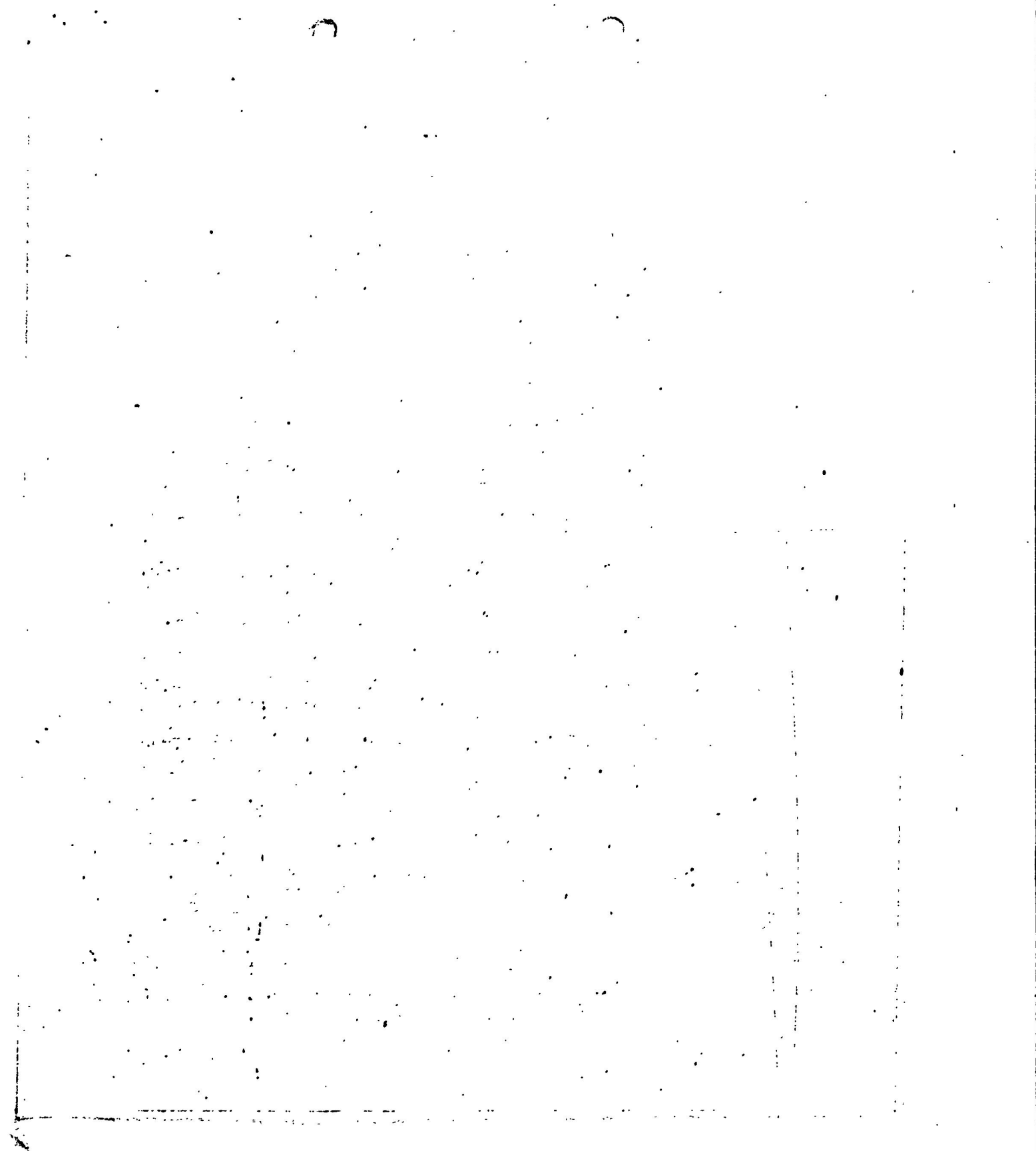














The main body of the page is mostly blank white space, containing only scattered, faint black specks and noise, which are likely artifacts from the scanning process. There is no legible text or structured data present.

