

This document is made available through the declassification efforts  
and research of John Greenewald, Jr., creator of:

# The Black Vault



The Black Vault is the largest online Freedom of Information Act (FOIA) document clearinghouse in the world. The research efforts here are responsible for the declassification of hundreds of thousands of pages released by the U.S. Government & Military.

**Discover the Truth** at: <http://www.theblackvault.com>

SECRET

8 JAN 1960

MEMORANDUM FOR: Chief of Operations, DD/P  
 SUBJECT : Project LIENFTY (Renewal)

with Mexico

1. The attached project, originating in WH Division, is presented for renewal for the period 1 December 1959 through 31 November 1960. The project provides for physical and photographic surveillance operations in support and exploitation of other Mexico City operations, particularly those targetted at Soviet personnel and installations.

2. Authority is requested to obligate \$84,910 from the DD/P-WH Division operating budget: \$48,485 for fiscal year 1960 and \$36,425 for fiscal 1961, subject to the availability of funds. These sums include \$61,910 compensation for five contract agents (three of whom serve as principal agents for segments of the project), and sixteen support agents; \$3,500 for vehicle maintenance and commercial carrier travel; \$7,500 for operational equipment; \$5,000 for maintenance of three safehouses; \$2,000 for additional safehouse, post office box, and vehicle rental; \$1,000 exchange commodities; \$2,000 "key" money, broken contracts, etc.; and \$2,000 for the purchase of information, documents, payment of bribes, etc.

3. The attached renewal request prepared in the Division and supported by a project review prepared in the field, reviews the activities of the project during the past year and presents a detailed breakdown of the funds requested. The project operates in three segments: (a) Contract agent Oliver G. SCANTLING is an independent asset who is used to follow-up and exploit operational information on target personnel and installations, to case various installations of interest, acquire property, etc.; (b) a photographic surveillance team, under principal agent Raymond H. GERENDE, utilizing three houses or apartments and one photo truck; and (c) a physical surveillance team under principal agent Simon D. CLACKETT, consisting of three trained members at the present time. The attached renewal request reviews the activities and accomplishments of the project in terms of these three segments and in relation to project objectives. SCANTLING's contribution to the collection of operational information regarding Soviet personnel and installations is regarded as the most unique. He also

SECRET

0004042

SECRET  
REPRODUCTION  
PROHIBITED

trained CLACKETT in radio controlled mobile surveillance. SCANTLING also has rendered valuable support to the LITACIT operation having gained entry to the target under a fabricated cover. He has also cased and prepared reports on the LITABEY target in preparation for future operations and performed investigations of numerous other Station targets of opportunity. He investigated many leads from other audio-surveillance operations enabling the Station to maintain current data on various Soviet contacts and resulting in a recruitment attempt which, while unsuccessful, is believed to indicate future potential along this line. He has further been used to develop radio procedures for the mobile teams and to rent various properties in support of other Station operations. The GERENDE segment, using three base houses for photography, produced upwards of 12,000 photographs during the year. One base has recently begun taking motion pictures of Soviet personnel in the course of conversation which have been forwarded to FI/D for possible exploitation by lip reading analysis. This segment also operates the mobile radio surveillance vehicles. A mobile photography surveillance truck has been used during the project year for coverage of various Station targets which do not warrant the establishment of permanent photographic bases. GERENDE has also served to rent post office boxes, hotel rooms, etc., in support of other Station operations. During the past project year CLACKETT, who returned to Mexico in early April 1959 after Headquarters training, spent the following two months being trained by SCANTLING in mobile surveillance techniques. He then undertook training of a four member team which was judged ready for operational use toward the end of the project year. Two additional contract agents, Wilma J. FIORDALISI and Louise J. MACRINO, performed translation and support functions.

4. Appropriate staff components concur in recommending renewal.

(a) CI Staff notes that the CI value of the project is difficult to judge since it appears that much of the material produced remains in the Station for exploitation. However, CI Staff remarks that the value of the project should be increased when the CLACKETT surveillance team enters into active operation. CI Staff suggests that the Station be queried as to the pretext or circumstances which SCANTLING frequently visits [redacted] the operation of the property adjacent to the Soviet [redacted].

REPRODUCTION  
PROHIBITED  
SECRET

0004043

SECRET

REPRODUCTION PROHIBITED

(b) FI/OPS notes that while the project review presents a clear picture of the aims and objectives of the various segments, it does not provide, except in the case of SCANTINE, detailed indication of the value or usefulness of the other segments, particularly the photographic activity. FI/OPS requests that the Station provide such an appraisal during the first quarter of 1960. FI/OPS recommends strongly that the photo coverage be reviewed from the standpoint of value and usefulness with a view to determining whether the LILYRIC activity could not be safely eliminated and the additional photographic coverage conducted on a more selective basis, without materially affecting overall usefulness. FI/OPS notes that, in the absence of further proof of usefulness, the color photography and moving pictures appear to be an unnecessary luxury. FI/OPS commends the careful handling of the CLACKETT segment and requests that the next project action include examples of the team's progress.

5. I recommend renewal of Project LIEMPTY as presented with attention to the staff comments in paragraph 4 above.

REPRODUCTION PROHIBITED

*W. Floyd Gage*  
 W. FLOYD GEORGE  
 Chief  
 Foreign Intelligence

Approved: *Richard Helms*  
 COP-DD/P

\_\_\_\_\_  
 Date

Attachment:  
 Project Outline LIEMPTY

Staff Coordination:  
 For C/FI/OPS -s/R. Bryant  
 For CI Staff -s/R. Brown  
 For C/CCD -s/P. Youngblood.

REPRODUCTION PROHIBITED

SECRET

0004044

~~SECRET~~

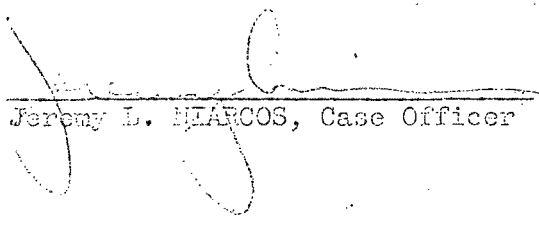
~~SECRET~~

REPRODUCTION  
PROHIBITED

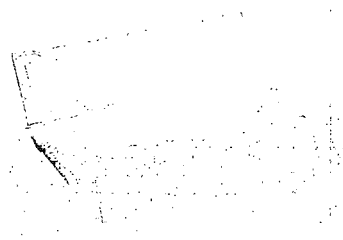
LIEMTY  
PROJECT

Mexico City  
STATION

REPRODUCTION  
PROHIBITED

  
Jeremy L. NIARCOS, Case Officer

  
Willard C. CURTIS, Chief of Station



0004045

50-6-74/1

50-6-74/1

~~SECRET~~

~~SECRET~~

ES COPY

ES COPY

ENCLOSURE PART 1A HMMMA-22387

ENCLOSURE PART 1A HMMMA-22387

~~SECRET~~

I. CURRENT OBJECTIVES AND PRODUCTION RELATED THERETO

A. Oliver G. SCANTLING Segment (in relation to project objectives.)

1. "To collect operational information pertaining to LIMERICK personnel and physical facilities." SCANTLING has continued to provide worthwhile information in support of this objective. (See previous project review forwarded by HMA-20052 of 18 October 1962.) During the past year SCANTLING was used to follow up leads produced by both LIFEAT and LIENVOY in support of this objective. In particular SCANTLING provided, in blueprint detail, casing reports on the homes of two Soviet intelligence officers who are targets for Station technical operations.

SCANTLING also is used to aid the Station in maintaining current records of the residences of Soviet personnel living in Mexico. This is accomplished by SCANTLING's followup of LIENVOY leads which indicate Soviet interest in renting specific properties.

2. "To collect operational information pertaining to other targets of opportunity, foreign official installations and personnel of intelligence interest operating in Mexico." SCANTLING has proved successful in providing information on other Station targets:

- a. SCANTLING obtained information on AMBROUET-2, a suspect Soviet support agent which was the basis of further Station operations against this target.
- b. SCANTLING provided a casing of the former Yugoslav Commercial Office against which the Station had planned a technical operation. However, this site was evacuated by the target mission before plans were completed for this attempt.
- c. SCANTLING has conducted detailed investigations in various cases involving possible agents or contacts of hostile intelligence services. These cases were of prime concern to Station Mexico but frequently were undertaken at the request of Headquarters or other Stations.

3. "To provide support to other Station operations as may be requested by the Station officers concerned." In the past SCANTLING's activities in this area were concerned primarily with recruitments, debriefings and surveillances. During the reporting period, however, the weight of SCANTLING's support to other Station operations have taken other forms. Examples from this area of activity include the most fruitful efforts on SCANTLING's part:

~~SECRET~~~~SECRET~~

0004046

SECRET / ~~SECRET~~

2-

- a. Support of the sensitive AMFOC operation, in which Raymond H. GERENDE also played a vital role, was of singular importance to the success of the operation. SCANTLING's many fields of operational experience were drawn on fully and he thereby provided a unique contribution to the operation. Without the assistance of SCANTLING and GERENDE with their unique qualifications, this operation would have been difficult in the extreme if indeed at all possible.
- b. In support of the Station's harassment campaign against Juan Jose AREVALO Bermejo, launched at the request of Headquarters, SCANTLING again provided the means for carrying out a large portion of the action taken. SCANTLING's efforts ranged from the mailing of "poisoned" candy to the target to the placing of threatening phone calls. SCANTLING also made calls to various Mexican newspapers and mailed "montage" pictures of AREVALO and a Soviet intelligence officer to Guatemalan newspapers in the campaign to discredit and discourage AREVALO in the Guatemalan Presidential campaign.
- c. SCANTLING is used as the alternate contact in a sensitive LAURICLE project. This is for the purpose of minimizing the danger of the action agent in this project being recognized as being in contact with an obvious PBERIME citizen. SCANTLING's contribution to this operation has been noteworthy both from the standpoint of security and agent handling.
- d. SCANTLING continued to conduct numerous pretext and neighborhood investigations. As in the past many of these investigations were in relation to highly sensitive cases.

4. Although SCANTLING's LIEMPHY project objectives can not be completely fulfilled, it is the Station's opinion that SCANTLING continues to make valuable contributions to the objectives of the project and to other Station activities. SCANTLING's production, measured against monetary expenditure, case officer time and other intangibles factors, unquestionably justifies his continuing as an integral part of Project LIEMPHY.

B. Raymond E. GERENDE Segment (In relation to project objectives):

1. "To collect operational information pertaining to LEMERICK personnel and physical facilities through use of photographic basehouses." Three photographic bases, LIMITED, LILERIC and LICALLA, contribute to these objectives. Although SCANTLING now acts as cutout with the LIMITED base, GERENDE continues to be responsible for the processing of all photo take from the LIEMPHY operation including take from LIMITED. To avoid repetition, the station is omitting the description of the functions of these three bases and how they contribute to the above objective. This was fully described in the 1960 Request for Project Renewal (HQA-15979).

SECRET / ~~SECRET~~

0004047

5-

2. "To collect operational information and identify operational leads pertaining to Station targets of opportunity." The LIENTRAP operation, handled by GERENDE, is still the major contributor to this objective. LIENTRAP operational emphasis continues to remain in the area of photo stakeout of prominent Mexican Communists and is presently working fulltime on providing pictures of individual Communists, homes suspected of being meeting sites used by the Communist Party and the Communist Party Headquarters itself. LIENTRAP has also recently begun to be used on ZRINICK leads. It is expected that activities of LIENTRAP in that latter area will expand in the coming year.

3. "To provide operational support to Station operations including the renting of hotel rooms and safe apartments, renting and servicing of post office boxes, and conducting counter-surveillances." GERENDE's contribution to the AMROD operation was noted in paragraph I.A.3.a. above. GERENDE's comprehensive area knowledge and personal operational capabilities enable him to make a valuable contribution in such operations as AMROD and also enable him to procure the most desirable safe sites in support of the Station's operations. The project's assets, particularly GERENDE and LIEMPT-10, presently provide 20 post office box mail drops for use of Mexico City Station and other Stations. Although it is planned to reduce this number considerably during the next year, (since other Station assets now can provide a number of live accommodation addresses), a number of post office boxes will be retained for use in future operations.

4. The quality and quantity of operational information produced by the photographic bases and other activities under GERENDE's control and supervision is considered by the Station worthwhile and in some cases unique. It is concluded, therefore, that this segment of the LIEMPT Project should be continued.

C. Relationship to the Related Mission Directive

As noted in the examples given above, Project LIEMPT has provided valuable support to many Station operations and thereby has been a contributing factor to the fulfillment of the Related Mission objectives of the Station. The project has not produced any positive intelligence nor is it intended to do so. The project's sole purpose is to provide a mechanism for the development of operational information.

II. CHANGES

The one major change made in the LIEMPT Project was the replacement of GERENDE by SCAMBLING as cutout with the LIMITED basehouse. This was arranged so as to provide GERENDE with more time for rapid processing of the LIEMPT phototake. It also makes for better rapport with the basehouse keeper (LIEMPT-6) since SCAMBLING is closer in age to him than GERENDE.

Louisa J. SACRINO (ps) suffered a recurrence of the heart condition which nearly caused her death approximately eight years ago. Complete rest has been

0004048



~~SECRET~~~~SECRET~~

4-

ordered by her doctors and an operation may be necessary in early 1964. It is therefore unlikely that she will be able to work during the coming project year. Station does not plan to request cancellation of her operational clearance at this time, but has not included salary payments to her in the estimated costs of the project for the coming year.

The unusual salary increase reflected for LIEMTY-19 in the "Project Costs" (below) section for the coming year is due to this agent's new duties of LIFEAT processing in addition to her old duties as translator. Agent's OA was amended for this use on 2 January 1963.

### III. EFFECTIVENESS

The comments made concerning the project's effectiveness in the Project Renewal of 1960 (HMMA 15979) remain valid. Indeed the Station's need for the type of services provided by the assets of this project are at least as great today as they were when those comments were originally forwarded.

### IV. PROBLEMS

There are presently no known major problems facing the operation which would affect either the security or the effectiveness of this operation. The security problem facing the LICALLA portion of the operation and described in HMMA-15979 and subsequent renewal requests has been resolved by the Cuban Government's release of three KURIOT personnel earlier this year. As was noted previously, one of this group had knowledge of the LICALLA operation.

Both SCANTLING and GERENDE took the LCPLUTER during the month of October 1963. No security problems were revealed by this test.

### V. PLANS

The Station considers that the project is operating at its optimum size and does not plan to expand it during the coming year. Efforts will be continued to refine and better utilize the existing project organization and to improve the compartmentation and security of the project.

### VI. COSTS

A. Past Project Year - Station records show that Project LIEMTY expended approximately \$US 50,500.00 during FY 1963 (1 December 1962 - 30 June 1963) and has to date in FY 1964 (through 30 September 1963) expended \$US 7,520. Approximately \$US 10,300 will be expended during the last two months of the project year. This will make a total expenditure for the project year of about \$US 48,600 or \$US 1,300 under that which was allotted for this project.

B. Next Project Year - Of the total \$US 49,700 budget, itemized below, approximately \$US 30,290 will be expended in FY 1964 and the remainder \$US 19,410 in FY 1965.

~~SECRET~~

REPRODUCTION  
PROHIBITED

~~SECRET~~

0004049

PAGE 28 OF 68  
FORM NO. 1

5-

<u>AGENT SALARIES</u> (including X'mas bonuses)	<u>US per year</u>	<u>FY 1964</u>	<u>FY 1965</u>
Raymond H. GERENDE	6,000		
Oliver G. SCAMPLING	5,500		
Louise J. MACRINO (at \$US 2.02 per hour)	no salary		
LIEMPTY-4	2,400		
LIEMPTY-5 (at US 1.75 per hour)	1,000		
LIEMPTY-6	3,700		
LIEMPTY-7	no salary		
LIEMPTY-8	2,400		
LIEMPTY-9	3,600		
LIEMPTY-10	4,400		
LIEMPTY-11	2,500		
LIEMPTY-12	2,000		
LIEMPTY-13	2,000		
LIEMPTY-14	2,000		
LIEMPTY-15	2,000		
LIEMPTY-16	2,000		
LIEMPTY-17	no salary		
<b>SUB TOTAL</b>	<b>\$US 39,500</b>	<b>\$US 24,540</b>	<b>\$US 15,160</b>

OPERATIONAL EXPENSES

Transportation:  
 Maintenance of MV-2279, MV 2284,  
 MV 2256 2,000

**REPRODUCTION PROHIBITED**

**REPRODUCTION PROHIBITED**

0004000

6-

Operational Expenses	\$US Per Year	FY 1964	FY 1965
Real Estate			
Rent, utilities and maintenance of basehouses -			
LIMITED*	3,300		
LICALLA*	1,700		
LILYRIC	1,200		
Procurement of safehouses, post office boxes, and rental of automobiles	500		
Purchase of information, documents and bribes	500		
<b>SUB TOTAL</b>	<b>9,200</b>	<b>5,390</b>	<b>3,810</b>
Repair, maintenance and purchase of replacement photographic equipment and purchase of film	1,000		
<b>SUB TOTAL</b>	<b>1,000</b>	<b>560</b>	<b>440</b>
<b>GRAND TOTAL</b>	<b>\$US 49,700</b>	<b>\$US 30,290</b>	<b>\$US 19,410</b>

VII. EMERGENCY CONDITIONS

Emergency recontact arrangements for Oliver G. SCANTLING and Raymond H. GERENDE are on file in Headquarters (see HEMA 15982 of 23 November 1960 and HEMA 15981 of 23 November 1960.) For further information see project renewal request of 1960 forwarded by HEMA 15979.

VIII. TRAINING

No training, other than that within the competency of SCANTLING or GERENDE to give, is anticipated for the coming project year.

\* NOTE: LIMITED and LICALLA rents are reported to Station by BEROSINE and credited to LIMESA expense.

**REPRODUCTION PROHIBITED**

50-6-34

**REPRODUCTION PROHIBITED**

50-6-34/1

US 387

IT 387

ENCL 1 & PART 1 & HASAL A-22 387

ENCL 1 PART 2 & HANNA-22 387

004051

~~SECRET~~

REPRODUCTION  
PROHIBITED

REVIEW OF PROJECT LIEMPTY  
(For the Purpose of Project Renewal)

COVER SHEET

CRYPTONYM LIEMPTY

FIELD CASE OFFICER Jeremy L. NIARCOS

STATION Mexico City

CHIEF OF STATION Willard C. CURTIS

The attached project action is presented for approval for the period  
1 December 1962 through 30 November 1963.

US COPY

GROUP 1  
Excluded from automatic  
downgrading and  
declassification

SEP-6-74/1

0004152

PAGE 3/  
COPY NO. \_\_\_\_\_

68

~~CONFIDENTIAL~~

~~SECRET~~

## Review of Project LIEMPTY

(For the purpose of Project Renewal)

I. CURRENT OBJECTIVES AND PRODUCTION

A. Oliver G. SCANTLING Segment (discussed in relation to project objectives):

1. "To collect operational information pertaining to LIMERICK personnel and physical facilities." SCANTLING has continued (see previous Project Reviews forwarded as attachments to HMMA-17999, 31 October 1961, HMMA-14093, 13 November 1959, and HMMA-15979, 18 November 1960) to provide worthwhile information pertaining to this objective. During the past year SCANTLING has continued to be used extensively to follow up leads produced by LIFEAT and LIENVOY. An excellent example of this blending of various Station support assets was the investigation and casing performed by SCANTLING after leads from both LIENVOY and LIFEAT indicated the possibility of launching a successful technical operation against the residence of a high ranking LIMERICK intelligence officer assigned to Mexico under diplomatic cover. With the aid of the thorough casing report and neighborhood investigation completed by SCANTLING, Station KURIOT personnel, supported by other Station support assets, were successful in installing a technical device in the target.

SCANTLING continues to be the Station's primary means of keeping current records on the residences of the many Soviet personnel in Mexico City. This is primarily accomplished through SCANTLING's follow up of all LIENVOY leads which indicate interest by Soviets in specific quarters. (See previous project renewal requests for additional details.)

2. "To collect operational information pertaining to other targets of opportunity, foreign official installations and personnel of intelligence interest operating in Mexico". SCANTLING is very useful for collecting information on other Station targets:

a. On the basis of a lead from the ODACID installation in Veracruz, the Station (with Headquarters support) mounted an operation to unobtrusively sabotage a large unit of agricultural machinery (of U. S. origin) which was in transit to Cuba. To mount this operation, a precise and detailed casing of the implement was essential. This SCANTLING was able to accomplish in one trip to Veracruz with results that contributed substantially to the operation.

0004053

~~SECRET~~

- 2 -

b. SCANTLING provided the Station a detailed investigation of Harotun ("Harry") KOPOIAN, employee of American Communists Albert and Margaret MALTZ, which determined the residence of KOPOIAN as well as his family status and connections.

c. In the Satellite area, SCANTLING completed a casing of an official Yugoslav installation in conjunction with a projected Station technical operation.

3. "To exploit operational leads through recruitments, debriefings, and surveillances." SCANTLING has contributed to this objective both directly and indirectly as noted in the following examples:

a. SCANTLING completed a detailed and secure interview of the fiancée of BESMOOTH to determine her connection with the principals in the MCMAYFOWL case, particularly any connection with procurement of documents used in the flight behind the Iron Curtain. This assignment was extremely sensitive (SCANTLING was not told true reason for interview) and SCANTLING did an admirable job while maintaining his cover for having the interview.

b. SCANTLING was called on for extensive initial spade work in the BEKNAVE/BECHICK operation. SCANTLING gave his usual competent performance despite the fact that the role assigned him was unique to his experience.

c. SCANTLING performed one man surveillance of a sensitive Station Soviet double agent which contributed significantly to that operation.

d. SCANTLING was used extensively during the visit of GPIDEAL as part of the Station's effort in providing maximum protection for the GPIDEAL party.

e. In addition, SCANTLING performed numerous pretext and neighborhood investigations, some of which were highly sensitive. SCANTLING also does most of the local investigations requested by ODACID and other ODYOKE components.

4. In addition to his contributions to the above objectives, SCANTLING is used for miscellaneous support requirements from the Station. For example, SCANTLING handled LIEMBROIL-2 until the return of LIMOTOR-14 in July 1962. SCANTLING is also used to spot and rent safe houses and apartments for other Station operations.

~~SECRET~~

SECRET  
 CONTROLLED  
 DISTRIBUTION

0004054

PAGE 33 of 68  
 COPY NO. \_\_\_\_\_

~~SECRET~~

- 3 -

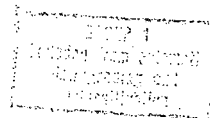
5. As stated in the preceding Requests for Project Renewal, although SCANTLING's LIEMPTY Project objectives can never be completely fulfilled, it is the Station's opinion that SCANTLING has made important and valuable contributions to LIEMPTY Project objectives specifically and to other Station activities in general. SCANTLING's production, measured against monetary expenditures, case officer time and other intangible factors, unquestionably justifies his continuation as an integral part of Project LIEMPTY.

B. Raymond H. GERENDE Segment (discussed in relation to project objectives):

1. "To collect operational information pertaining to LIMERICK personnel and physical facilities through use of photographic base houses." Three photographic bases, LIMITED, LILYRIC and LICALLA, contribute to this objective. To avoid repetition, the Station is omitting the usual description of the functions of these three bases and how they contribute to the above objective. This was described in detail in the 1960 Request for Project Renewal. (HMMA-15979)

2. "To collect operational information and identify operational leads pertaining to Station targets of opportunity." The LIENTRAP operation, handled by GERENDE, is still the major contributor to this objective. Among LIENTRAP's regular and extensive photographic assignments, was the photo stakeout of prominent Mexican Communists (some of whom have never been photographed previously by KUBARK) and Communist Party Headquarters. During this assignment, LIENTRAP was able to cover the recent move of PCM Headquarters (the first information Station had of the move) and to continue photo surveillance at the new site.

3. "To provide operational support to Station operations, i. e., rent hotel rooms and apartments, and conduct counter-surveillances." GERENDE is used frequently to rent hotel rooms and apartments for other Station operations and activities. GERENDE's comprehensive area knowledge and personal operational capabilities combine to make him an extremely valuable Station asset for such support activities. GERENDE also procures and services post office box letter drops for the many Station operations requiring them.

~~SECRET~~

0004055

PAGE 34 of 68  
COPY NO. \_\_\_\_\_

~~SECRET~~

- 4 -

4. The quality and quantity of operational information produced by the photographic bases and other activities under GERENDE's control and supervision is considered worthwhile and in some cases unique. The Station concludes, therefore, that this segment of the LIEMPTY Project should be continued.

#### C. Relationship to Related Mission Directive Objectives:

As stated in previous project renewals, it can readily be noted that Project LIEMPTY has provided support to many Station operations and in this manner has been a contributing factor to the furtherance of the Related Mission Directive. The project has not produced any positive intelligence nor has it been intended that it should do so. The project's sole purpose is to provide a mechanism for the development of operational information in support of other Station operations.

## II. CHANGES

There have been no changes in the LIEMPTY Project during the past project year affecting either objectives or personnel.

## III. EFFECTIVENESS

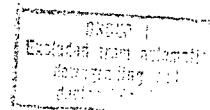
There has been no change in Project LIEMPTY which would alter the validity of the remarks made in Section III of 1960 project renewal request (HMMA 15979)

## IV. PROBLEMS

The security problem in connection with the LICALLA operation, which was described in 1960 renewal request, is still present but has caused no known difficulty. At Headquarters suggestion in HMMW-9736, the LICALLA base was reactivated on 29 May 1961. The base operator continues to be alert for any unusual incidents which might indicate that the base has been compromised.

## V. PLANS

The Station considers that the project is operating at its optimum size and does not plan to expand it during the coming year. Efforts will be continued to refine and better utilize the existing project organizational arrangements. As in the past, the Station will continue its efforts to improve the compartmentation and security of the project.

~~SECRET~~

0004056



~~SECRET~~

REPRODUCTION  
PROHIBITED

VI. COSTS

A. Past Project Year - Station finance records indicate that Project LIEMPTY expended approximately \$26,250 during Fiscal Year 1962 (1 December 1961 - 30 June 1962) and has thus far during Fiscal Year 1963 (through 30 September 1962) expended about \$7,000.00. It is anticipated that about \$8,000.00 will be expended during the last two months (October and November 1962) of the project year. This will make a total expenditure during the project year of about \$43,250, or \$6,250.00 under the budget estimate of \$49,500.00.

B. Next Project Year - Of the total \$49,900.00 budget, itemized below, approximately \$30,400.00 should be expended during the remainder of Fiscal Year 1963 and the balance, \$19,500.00 should be expended during Fiscal Year 1964. Normal accounting procedures will be used for all expenditures.

<u>AGENT SALARIES</u> (Includes Christmas bonus 1962)	\$US Per Annum	FY 1963	FY 1964
Raymond H. GERENDE	\$ 6,000.00		
Oliver G. SCANTLING	5,500.00		
Louise J. MACRINO (at \$US 2.02 per hour)	500.00		
LIEMPTY-4	2,400.00		
LIEMPTY-5 (at \$US 1.75 per hour)	1,000.00		
LIEMPTY-6	3,500.00		
LIEMPTY-7 (no salary)	----		
LIEMPTY-8	2,200.00		
LIEMPTY-9	3,200.00		
LIEMPTY-10	4,200.00		
LIEMPTY-11	2,900.00		
LIEMPTY-12	2,200.00		
LIEMPTY-13	2,200.00		
LIEMPTY-14	2,200.00		
LIEMPTY-19	1,000.00		
LIEMPTY-24 (no salary)	----		

SUB TOTAL      \$32,000.00      \$24,000.00      \$15,000.00

GROUP 1  
Excluded from automatic  
downgrading and  
declassification

0004057

~~SECRET~~

- 6 -

<u>OPERATIONAL EXPENSES</u>	\$US. per annum	FY 1963	FY 1964
-----------------------------	-----------------	---------	---------

Transportation:  
 Maintenance of MV 2279,  
 MV 2284, and 2236                    2,000.00

Real Estate:  
 Rent, utilities, and  
 maintenance safehouses

*LIMITED	3,300.00
*LICALLA	1,700.00
LILYRIC	1,200.00

Procurement of safehouses,  
 post office boxes, and renting  
 of automobiles                    1,000.00

Purchase of information, iden-  
 tification documents, and bribes 500.00

SUB TOTAL	\$9,700.00	\$5,700.00	\$4,000.00
-----------	------------	------------	------------

OPERATIONAL EQUIPMENT

Repair, maintenance and pur-  
 chase of replacement photographic  
 equipment and purchase film    1,200.00

SUB TOTAL	<u>\$ 1,200.00</u>	<u>\$ 700.00</u>	<u>\$ 500.00</u>
-----------	--------------------	------------------	------------------

GRAND TOTAL	\$49,900.00	\$30,400.00	\$19,500.00
	(per project year)	(FY 1963)	(FY 1964)

\* NOTE: LIMITED and LICALLA rents are returned to Station by LIMOUSINE and credited to miscellaneous receipts.)

~~SECRET~~

50-6-24/1  
 RECEIVED  
 COMMUNICATIONS SECTION  
 63

0004058

PAGE 32 OF 63  
 COPY 00

~~SECRET~~

REPRODUCTION  
PROHIBITED

VII. EMERGENCY CONDITIONS

Emergency recontracting arrangements for Oliver G. SCANTLING and Raymond H. GERENDE are on file in Headquarters (See HMMA 15982 of 23 November 1960 and HMMA 15981 of 23 November 1960.) For further information see project renewal request of 1960 forwarded by HMMA 15979.

VIII. TRAINING

No training, other than that within the competency of SCANTLING or GERENDE to give, is anticipated for the coming project year.

REPRODUCTION  
PROHIBITED

~~SECRET~~

GROUP 1  
Excluded from automatic  
downgrading and  
declassification

50-6-74/1

0004059

SECRET/~~KAPOK~~

REPRODUCTION  
PROHIBITED

REVIEW OF PROJECT LIEMPTY

(For the Purpose of Project Renewal)

COVER SHEET

CRYPTONYM LIEMPTY

FIELD CASE OFFICER *Q. N. Ousler*  
Quinton N. OUSLER

STATION Mexico City

CHIEF OF STATION *Willard C. Curtis*  
Willard C. CURTIS

REPRODUCTION  
PROHIBITED

The attached project action is presented for approval for the period  
1 December 1961 through 30 November 1962.

REPRODUCTION  
PROHIBITED

SECRET/~~KAPOK~~

0004060

FORM 39 68 68  
COPY

SECRET/~~TOP SECRET~~RE  
Review of Project LIEMPTYPR  
(For the Purpose of Project Renewal)I. CURRENT OBJECTIVES AND PRODUCTION

A. Oliver G. SCANTLING Segment (discussed in relation to project objectives):

1. "To collect operational information pertaining to LIMERICK personnel and physical facilities." SCANTLING has continued (See the last two Project Reviews forwarded as attachments to HMMA-14093, 13 November 1959, and HMMA-15979, 18 November 1960) to provide worthwhile information pertaining to this objective.

a. During the past year SCANTLING has continued to be used to follow up leads produced by LIENVOY. For example, operational information recently indicated that the LIMERICK target was using the services of a Mexico City firm to repair safes. Through discreet investigation SCANTLING was able to identify the firm, its location and the name of the owner in the event that we later wished to make an approach to him or to exploit this information in another manner.

b. SCANTLING is still the Station's primary source for keeping current records on the residences of the many LIMERICK personnel in Mexico City. This is accomplished in several ways; the most important being SCANTLING's follow up of all LIENVOY leads which indicate the LIMERICK people are interested in renting a given piece of property. (See previous project renewal request for additional details).

2. "To collect operational information pertaining to other targets of opportunity, foreign official installations and personnel of intelligence interest operating in Mexico." SCANTLING is very useful for collecting information on other Station targets:

0004061

SECRET/~~TOP SECRET~~

SECRET/~~TOP SECRET~~

-2-

a. On the basis of a request to the Station from the ODACID Chief, SCANTLING was sent to Puebla to be an eyewitness to the 4 June 1961 Catholic inspired anti-CASTRO demonstrations. Not only did SCANTLING obtain the desired information, and samples of many of the leaflets used, but he prepared his report for the Station in time for the COS to give the ODACID Chief a briefing at 1000 hrs., 5 June 1961. SCANTLING does an excellent job on this type of assignment due principally to his ability to observe and report objectively.

b. SCANTLING was instrumental in establishing that Fernando LLANES Cavero and his wife were living at a local Mexico City address. This case has been of considerable counterespionage interest to Headquarters.

c. SCANTLING has continued his contributions to the Paul Frederick KIRSCHHOFF case by periodic interviews with the subject's neighbors and associates.

3. "To exploit operational leads through recruitments, debriefings, and surveillances." SCANTLING has contributed to this objective both directly and indirectly as will be noted by the examples listed below:

a. SCANTLING devoted a lot of time to the surveillance and attempted recruitment of [redacted] a Mexican national employed at the Cuban Embassy. SCANTLING talked with [redacted] several times and undoubtedly was primarily responsible for the later success of the recruitment made by another Station agent.

b. Some additional time was devoted to the Cesar GONZALEZ Sanchez case in February 1961 when SCANTLING determined that GONZALEZ was still in Mexico City. See the last renewal for additional details on this case.

c. In connection with the above objective SCANTLING has performed numerous pretext and neighborhood investigations for the Station. SCANTLING also does most of the local investigations requested by ODACID and other ODYOKE components.

SECRET/~~TOP SECRET~~

0004062

SECRET/

REPRODUCTION  
-3-  
PROHIBITED

d. SCANTLING spent six weeks during July and August of this year giving tradecraft and surveillance training to LIPAILS 5 and 7 from Monterrey. Although this is not a direct contribution to the above objective, it is considered sufficiently related to mention here.

4. In addition to his contributions to the above objectives, SCANTLING is used for miscellaneous support requirements from the Station. For example, SCANTLING is now handling LIEMBROIL-2 and will continue to do so until the return of LIMOTOR-14 in June 1962. Also, during the past project year, SCANTLING handled the LIRICE surveillance team until July 1961 when Simon D. CLACKETT (ps) returned to Mexico City. SCANTLING is also used to spot and rent safe houses and apartments for other Station operations.

5. As stated in the preceding Requests for Project Renewal, although SCANTLING's LIEMPTY Project objectives can never be completely fulfilled, it is the Station's opinion that SCANTLING has made important and valuable contributions to LIEMPTY Project objectives specifically and to other Station activities in general. SCANTLING's production, measured against monetary expenditures, case officer time and other intangible factors, unquestionably justifies his continuation as an integral part of Project LIEMPTY.

B. Raymond H. GERENDE Segment (discussed in relation to project objectives):

1. "To collect operational information pertaining to LIMERICK personnel and physical facilities through use of photographic base houses." Three photographic bases, LIMITED, LILYRIC and LICALLA, contribute to this objective. To avoid repetition, the Station is omitting the usual description of the functions of these three bases and how they contribute to the above objective. There has been no change in the coverage as described in the 1960 Request for Project Renewal.

2. "To collect operational information and identify operational leads pertaining to Station targets of opportunity." The LIENTRAP operation, handled by GERENDE, is still the major contributor to this

SECRET/

0004063

SECRET/~~TOP SECRET~~

-4-

objective. In addition to performing numerous photographic assignments in support of other Station operations, LIENTRAP devoted nearly four months, on a fulltime basis, to coverage of the LIERODE operation. For several weeks the entire "take" from the LIERODE target was recorded from the LIENTRAP vehicle. Later, the LIENTRAP agents operated the LIERODE technical gear from the initial LIERODE stationary base.

3. "To provide operational support to Station operations, i. e., rent hotel rooms and apartments, and conduct counter-surveillances." GERENDE is used frequently to rent hotel rooms and apartments for other Station operations and activities. GERENDE's comprehensive area knowledge and personal operational capabilities combine to make him an extremely valuable Station asset for such support activities. GERENDE also procures and services post office box letter drops for the many Station operations requiring them.

4. The quality and quantity of operational information produced by the photographic bases and other activities under GERENDE's control and supervision is considered worthwhile. The Station concludes, therefore, that this segment of the LIEMPTY Project should be continued.

#### C. Relationship to Related Mission Directive Objectives:

As stated in the previous project renewal, it can readily be noted that Project LIEMPTY has provided support to many Station operations and in this manner has been a contributing factor to the furtherance of the Related Mission Directive. The project has not produced any positive intelligence nor has it been intended that it should do so. The project's sole purpose is to provide a mechanism for the development of operational information in support of other Station operations.

## II. CHANGES

There have been no changes in the LIEMPTY Project during the past project year except that SCANTLING relinquished control of the LIRICE (formerly LIJERSEY) surveillance team in July 1961 in accordance with previous plans.

SECRET/~~TOP SECRET~~

0004064



SECRET/~~TOP SECRET~~

-5-

III. EFFECTIVENESS

There has been no change in Project LIEMPTY which would alter the validity of the remarks made in Section III of last year's project renewal request.

IV. PROBLEMS

The security problem in connection with the LICALLA operation, which was described in last year's renewal request, is still present but has not caused any known difficulty. At Headquarters suggestion in HMMW-9736, the LICALLA base was reactivated on 29 May 1961. The base operator has been cautioned to be ever alert for any unusual incidents which might indicate that the base has been compromised. This is the only problem experienced by the LIEMPTY Project during the past project year.

V. PLANS

The Station considers that the project is now operating at its optimum size and does not plan to expand it during the coming year. Rather, efforts will be devoted to refining and better utilizing the existing project organizational arrangements.

VI. COSTS

A. Past Project Year - Station finance records indicate that Project LIEMPTY expended \$21,458.00 during Fiscal Year 1961 (1 December 1960 - 30 June 1961) and has thus far during Fiscal Year 1962 (through 30 September 1961) expended about \$11,000.00. It is anticipated that about \$8,000.00 will be expended during the last two months (October and November 1961) of the project year. This will make a total expenditure during the project year of about \$40,500.00, or some \$12,500.00 under the budget estimate of \$53,000.00.

B. Ensuing Period - Of the total \$49,500.00 budget, itemized below, \$29,500.00 should be expended during the remainder of Fiscal Year 1962 and the balance, \$20,000.00 should be expended during Fiscal Year 1963. Normal accounting procedures will be used for all expenditures.

SECRET/~~TOP SECRET~~

0004065

PAGE 44 of 68  
CLASS NO.

SECRET/~~TOP SECRET~~

-6-

AGENTU. S. \$ PER ANNUM

Raymond H. GERENDE	\$ 5,520.00	
Oliver G. SCANTLING	5,000.00	
Louise J. MACRINO (@ \$2.02 per hour)	1,500.00	
LIEMPTY-4	2,200.00	
LIEMPTY-5 (@ \$1.75 per hour)	1,000.00	
LIEMPTY-6	3,000.00	
LIEMPTY-7 (No Salary)	-0-	
LIEMPTY-8	2,000.00	
LIEMPTY-9	3,000.00	
LIEMPTY-10	3,900.00	
LIEMPTY-11	2,800.00	
LIEMPTY-12	2,000.00	
LIEMPTY-13	2,000.00	
LIEMPTY-14	2,000.00	
LIEMPTY-19	1,000.00	
LIEMPTY-24 (No Salary)	-0-	
Christmas Bonuses 1961	2,580.00	
<b>SUB-TOTAL</b>		<b>\$ 39,500.00</b>

OPERATIONAL EXPENSES

Maintenance of MV-2279, 2284 and 2286.	\$ 2,000.00	
Procurement of Safehouses, post office boxes and renting automobiles.	1,000.00	
Purchase of information, identification documents, and bribes.	500.00	
<b>SUB-TOTAL</b>		<b>3,500.00</b>

OPERATIONAL EQUIPMENT

Repair, maintenance and purchase of replacement photographic equipment.	\$ 1,000.00	
<b>SUB-TOTAL</b>		<b>1,000.00</b>

SECRET/~~TOP SECRET~~

0004066

~~SECRET~~  
**REPRODUCTION  
PROHIBITED**

REAL ESTATE

Rent, utilities and maintenance  
of following safehouses:

*LIMITED	\$ 3,000.00	
*LICALA	1,500.00	
LILYRIC	1,000.00	
SUB-TOTAL	5,500.00	
GRAND TOTAL	\$ 49,500.00	

\*LIMITED and LICALLA rents are returned to the Station by LIMOUSINE and credited to Station miscellaneous receipts.

~~SECRET~~  
**REPRODUCTION  
PROHIBITED**

VII. EMERGENCY CONDITIONS

Please refer to last year's request for project renewal and HMMA-15982, 23 November 1960, and HMMA-15981, 23 November 1960.

~~SECRET~~  
**REPRODUCTION  
PROHIBITED**

~~SECRET~~

0004067

~~SECRET~~

REVIEW OF PROJECT LIEMPTY

(For the Purpose of Project Renewal)

REPRODUCTION  
PROHIBITED

COVER SHEET

CRYPTONYM LIEMPTY

FIELD CASE OFFICER Quinton N. OUSLER

STATION Mexico City

CHIEF OF STATION Willard C. CURTIS

The attached project action is presented for approval for the period 1 December 1960 through 30 November 1961.

REPRODUCTION  
PROHIBITED

~~SECRET~~

US COPY

0004068

SECRET/

REVIEW OF PROJECT LIEMPTY  
(For the Purpose of Project Renewal)

I. CURRENT OBJECTIVES AND PRODUCTION

A. Oliver G. SCANTLING Segment (discussed in relation to project objectives):

1. "To collect operational information pertaining to LIMERICK personnel and physical facilities." SCANTLING has continued (See the last Project Review forwarded as an attachment to HMMA-14093, 13 November 1959) to provide worthwhile and significant information pertaining to the above objective. There follow a few examples of SCANTLING's production:

a. A detailed casing of the LIMERICK electrical power supply was forwarded to Headquarters as an attachment to HMMA-14496, 12 February 1960. The production of this type of operational information, which takes several weeks to compile accurately, illustrates the unusual talents possessed by SCANTLING together with his valuable contributions to the Station's operational information collection effort.

b. SCANTLING has been used frequently to follow up leads produced by LIFEAT/LIMERICK (now produced by LIENVOY). For example, in May 1960, LIFEAT indicated that the LIMERICK target was having considerable contact with an AGENCIA ROBLES concerning the handling of incoming and outgoing shipments. By discreet investigation, SCANTLING was able to provide the Station with additional pertinent information about the address, owner and type of business engaged in by the firm. Such information then becomes readily available for exploitation should a LIMERICK shipment of particular interest come to the attention of the Station.

c. SCANTLING is the Station's primary investigative asset for keeping track of current residence addressees of LIMERICK personnel. The Station considers it important from the counterespionage standpoint to maintain information on the location of all

SECRET/

50-0-101/1

0004069

48 of 68

SECRET / KAPEL

-2-

LIMERICK residences. In addition, specific targets are continually considered for LICCOOL installations. A recent example of SCANTLING's efforts in this connection would be the spotting and acquisition of the LIMOTOR base in the same apartment building with LITALON -1. Contributions of this type operational information are quite time consuming due to the necessity for checking out several apartments that a LIMERICK individual may initially be considering as a residence.

2. "To collect operational information pertaining to other targets of opportunity, foreign official installations and personnel of intelligence interest operating in Mexico." As indicated below, SCANTLING is also extremely useful for collecting information on targets other than LIMERICK:

a. In March 1960 SCANTLING was instrumental in locating property adjacent to the LITABBY installation which the Station has since rented in anticipation of initiating photographic and technical operations. SCANTLING was able to accomplish this assignment only after a thorough casing and pretext investigations of the several pieces of property appropriate for such operations.

b. SCANTLING is also used to follow up sensitive leads in connection with LIFEAT and LIENVOY production from LITABBY and sister targets (See example as to type under I,A,L, b and c above).

c. SCANTLING was used as an investigative asset to determine the local address and exact employment of [REDACTED]

[REDACTED] a counterespionage case of interest to Headquarters and ODENVY.

3. "To exploit operational leads through recruitments, debriefings, and surveillances." As examples of SCANTLING's contribution to this objective, the following cases are listed:

a. SCANTLING devoted a considerable amount of time to his attempts to locate Cesar GONZALEZ Sanchez, a known agent of a Communist Country. He followed various leads on GONZALEZ from March to August 1960 before

SECRET / KAPEL

0004070

49 68

~~SECRET~~

-3-

GONZALEZ was finally identified and his Mexico City home and business addresses were ascertained. See HMMA-14526, 9 September 1960, for further details on this case.

b. The preliminary investigative work on a KUSODA case of priority interest was conducted by SCANTLING. During this investigation it was necessary for SCANTLING to travel to Aguascalientes, Guanajuato and Minatitlan to obtain the information required by Headquarters. See the attachments to HMMA-1416, 20 May 1960, for the results of the investigation.

4. In addition to his contributions to the above objectives, SCANTLING is used for miscellaneous support requirements of the Station. For example, SCANTLING handled several of Raymond H. GERENDE's (ps) operations while the latter was away from Mexico City during August and September 1960. Also, SCANTLING has been managing the LIJERSEY surveillance team since the departure of Simon D. CLACKETT in August 1960. It is hoped that SCANTLING can be relieved of this assignment as soon as the LITEMPO project is approved. SCANTLING has also been used to spot and rent safe houses for various Station operations, a valuable operational support service.

5. As stated in the preceding Request for Project Renewal, although SCANTLING's LIEMPTY Project objectives can never be completely fulfilled, it is the Station's opinion that SCANTLING has made important and valuable contributions to LIEMPTY Project objectives specifically and to other Station activities in general. SCANTLING's production, measured against monetary expenditures, case officer time and other intangible factors, unquestionably justifies his continuation as an integral part of Project LIEMPTY.

B. Raymond H. GERENDE Segment (discussed in relation to project objectives):

1. "To collect operational information pertaining to LIMERICK personnel and physical facilities through use of photographic base houses." Together with their extensive photographic coverage of the LIMERICK target, the photographic bases also contribute other types of operational information:

a. LIMITED - This base compiles daily logs indicating all arrivals, departures and, where possible, identities of every person visiting or working at the LIMERICK target.

0004071

SECRET/~~KAZOR~~

-4-

REPRODUCTION  
PROHIBITED

This information is particularly useful in keeping track of LIMERICK personnel and assisting with the identification of visitors to the installation. Also, LIMITED maintains a summary attendance list of LIMERICK employees on a daily basis; this enables the Station quickly to ascertain the presence or absence of an employee on any given day. Finally, one other significant service is performed by this base, the radio dispatching of the LIEMBRACE surveillance team on LIMERICK personnel and targets of opportunity. LIMITED's photographic coverage is still concentrated on visitors, as opposed to employees, to the LIMERICK installation. A recent example of the base's contributions to Station efforts is the case of [redacted]. In this case, a LIENVOY lead indicated that an American might visit the LIMERICK target on a certain day. The base was alerted to dispatch the radio-controlled surveillance team on any person appearing to be an American. The results of this assignment were indicated in MEXI-6392 and several other cables. LIMITED was also able to provide photographs, which when compared with photographs provided by Headquarters, left no question as to [redacted] identity.

b. LILYRIC - This base's output of high-quality clandestine photographs has been in about the same quantity as last year. In addition, the base operator, LIEMPTY-14, prepares weekly reports on LIMERICK employees and their wives. LILYRIC also performs the assignment of noting and reporting the license plate numbers of all cars bringing visitors to the LIMERICK installation. LILYRIC photographs also are concentrated on visitors to the target, as opposed to employees. It should be noted that LILYRIC operates for photographic coverage during the hours from daylight to 1400 hours each day of the week except Sunday. The LIMITED base maintains photographic coverage from 1400 hours to darkness each day except Sunday.

c. LICALLA - As reported in previous correspondence, the LICALLA base contributes to the collection of operational information through photographic coverage of LIMERICK employees and their families. Also, the base operator,

SECRET/~~KAZOR~~

0004072

PAGE 57 of 68  
COPY NO. \_\_\_\_\_



SECRET/~~KAFOR~~

-5-

LIEMPTY 9, supplies extremely worthwhile information pertaining to the apparent positions and jobs of the target employees. He accomplishes this objective by careful observation and analysis. LICALLA also maintains a daily attendance roster of all LIMERICK employees. LICALLA coverage of the target, both photographic and physical observations, enables the Station to keep abreast of LIMERICK personnel changes, a vital contribution to the Station's counter-espionage effort.

2. "To collect operational information and identify operational leads pertaining to Station targets of opportunity." The LIENTRAP operation, handled by GERENDE, is the major contributor to this objective. It has been possible for LIENTRAP to take photographs and to perform pretext investigations in support of numerous Station activities. The cases listed below are cited as examples:

a. In the case of Cesar GONZALEZ Sanchez (see I, A, 3, a, above) LIENTRAP was able to procure photographs of GONZALEZ at his Mexico City residence which, when compared to Headquarters provided photographs, left no doubt that GONZALEZ was the subject of interest to Headquarters.

b. LIENTRAP confirmed the identity of Olga CASTILLO de Ledon, a frequent visitor to the LIMERICK installation and an ardent supporter of the present Cuban regime, through a pretext investigation of the residents of an apartment building where CASTILLO was believed to live. Later, LIENTRAP supported the results of the investigation with excellent photographs of the subject.

3. "To provide operational support to Station operations, i. e., rent hotel rooms and apartments, and conduct counter-surveillances." GERENDE is used frequently to rent hotel rooms and apartments for other Station operations and activities. GERENDE's comprehensive area knowledge and personal operational capabilities combine to make him an extremely valuable Station asset for such support activities. GERENDE also procures post office box letter drops for the many Station operations requiring them.

SECRET/~~KAFOR~~

0004073

SECRET/~~TOP SECRET~~

-6-

4. It is the Station's conclusion that the money and case officer time expended on this segment of the LIEMPTY project is worthwhile and should be continued in view of the quality and quantity of operational information produced.

C. Simon D. CLACKETT Segment (discussed in relation to project objectives):

1. "To collect operational information and to identify operational leads pertaining to the LIMERICK target and Station targets of opportunity." During this project year the LIJERSEY surveillance team under the direction of CLACKETT began contributing to the Station's support efforts through pretext investigations and physical surveillances. Some examples of the team's work are listed below:

a. [redacted] is a Guatemalan Communist which the team had under surveillance from November 1959 to April 1960. The surveillance, together with information acquired from other sources, eventually resulted in an unsuccessful recruitment attempt of [redacted]

b. [redacted] is a Dominican of interest to the Station. The LIJERSEY team devoted portions of five months, January to May 1960, collecting information on subject through physical surveillance.

c. [redacted] was the subject of a physical surveillance during May and June 1960. [redacted] was later deported from Mexico through the efforts of LITEMPO-2.

d. CLACKETT and the LIJERSEY team performed numerous pretext investigations on Station targets of opportunity and on three separate occasions during the project year served as a counter-surveillance escort for Station officers in other operations.

2. CLACKETT, just prior to his resignation in August 1960, spent about five weeks giving tradecraft and operational skills training to LITEA-1. Although not specifically covered by the project objectives, this ability on CLACKETT's part is considered a significant contribution to the Station's support efforts.

SECRET/~~TOP SECRET~~

0004074

PAGE 53 of 68  
COPY NO. \_\_\_\_\_

SECRET/~~TOP SECRET~~

-7-

3. In view of CLACKETT's resignation, which was effective 31 August 1960, and the proposed transfer of the LIJERSEY team to the LITEMPO project, this segment of the LIEMPTY project will not be renewed. However, for the record, it is considered that the CLACKETT segment of LIEMPTY was worthwhile and the expenditure of Station assets in connection with LIJERSEY operations were justified.

D. Relationship to Related Mission Directive Objectives:

It can readily be noted that Project LIEMPTY has provided support to many Station operations and in this manner has been a contributing factor to the furtherance of the Related Mission Directive. The project has not produced any positive intelligence nor has it been intended that it should do so. The project's sole purpose is to provide a mechanism for the development of operational information in support of other Station operations.

II. CHANGES

A. Simon D. CLACKETT

The unexpected resignation of CLACKETT in August 1960 has necessitated the decision as how best to utilize the LIJERSEY surveillance team and still benefit from the training and experience gained by the team during the past year. As explained in the LITEMPO project outline, it was decided that the LITEMPO Staff Agent would have the time, the need and the requirements to handle and manage the LIJERSEY team on a regular basis; consequently, the Station believed that such a solution to this problem would permit the Station to continue to profit from CLACKETT's past efforts.

B. Oliver G. SCANTLING

Since CLACKETT's departure, SCANTLING has been handling the LIJERSEY team as an interim measure pending Headquarters approval of the LITEMPO project. SCANTLING has been exposed to, and likewise knows, only one of the team members, LIEMPTY-20. SCANTLING is known to L-20 only by an alias.

SECRET/~~TOP SECRET~~

0004075

SECRET

-8-

## C. Personnel Changes

1. LIEMPTY-15 - Member of the LIJERSEY surveillance team - Transferred to Project LITEMPO and cryptonym changed to LITED-2.
2. LIEMPTY-16 - Member of the LIJERSEY surveillance team - Transferred to Project LITEMPO and cryptonym changed to LITED-3.
3. LIEMPTY-20 - Assistant Team Leader of LIJERSEY surveillance team - Transferred to Project LITEMPO and cryptonym changed to LITED-1.
4. LIEMPTY-25 - Most recent addition to the LIJERSEY surveillance team. Transferred to Project LITEMPO and cryptonym changed to LITED-4.
5. There have been no other personnel changes within the LIEMPTY project, excepting the resignations of Simon D. CLACKETT and Wilma J. FIORDALISI.

III. EFFECTIVENESS

A. General comments pertaining to the value of the project efforts to the Station's needs - The Station is of the opinion that its operations are only as good as the support mechanisms backstopping and contributing to them. The availability of unilateral support agents and organizations, such as the LIEMPTY Project, to investigate leads and to collect operational information is an indispensable ingredient to the Station's espionage and counterespionage objectives. The Station would be seriously handicapped in its operational activities should the support services of such agents as CERENDE, SCANTLING and the agents under their control be suddenly made unavailable.

B. LIMERICK Target - The basis for most of the Station's counter-espionage activities directed against the LIMERICK target require detailed knowledge of the identity, activities and fellow associates of LIMERICK personnel. The LIEMPTY photographic basehouses undoubtedly provide more of this type information than any other Station operation. The production from LIEMPTY photographic bases and from the LIENVOY project provide the Station with the large majority of LIMERICK leads.

SECRET

0004076

SECRET/~~TOP SECRET~~

-9-

C. Targets of Opportunity - The immediate availability of independent assets to perform investigations, photographic assignments and other essential types of support services in connection with Station targets of opportunity represent an operational advantage which this Station considers highly significant. It is due to such LIEMPTY assets that an agent can be sent to distant areas in Mexico to do investigations, that photographs can be made of individuals and places which are of operational interest and apartments and hotel rooms can be acquired in fictitious names in support of sensitive operations and activities.

D. Although the progress and success of any support project depends upon requirements from other Station operations, it must be concluded that Project LIEMPTY has indeed been effective during the past project year.

#### IV. PROBLEMS

A. Security - The activities of the LICALLA base were suspended in September 1960 as a direct result of the arrest of three KURIOT technicians by the Cuban Government. One of the technicians was known to have knowledge of the four LIMUST units (LICALLA is located in one of these units) and the Station considered it appropriate to suspend photographic operations pending resolution of the situation. At this time, there is no indication when LICALLA operations will be resumed. The LICALLA base operator has reported that there have been no unusual inquiries or other suspicious actions which might indicate that LICALLA has been compromised to LIMERICK personnel; however, such a possibility will exist until the release of the three technicians. No other security problems have occurred during the past year.

#### V. PLANS

A. Processing of Photographs - During the past year considerable progress has been made in the Station's handling, i. e., sorting, indexing, identifying leads and filing, of photographs produced by the several bases.

B. Photographic Techniques - The previous LIEMPTY Project Renewal Request indicated that the Station planned to try new techniques using HY-PAN film in night photography. HY-PAN film was used on a trial basis during daylight hours with poor results. Almost invariably, prints

SECRET/~~TOP SECRET~~

0004077

SECRET/~~KABOK~~

-10-

from HY-PAN negatives were too grainy and consequently, were of little use in producing good identified shots of individuals. In view of these experiments, night photography has not yet been attempted. It should be noted that Eastman Kodak's new TRI-X PAN film, which all bases and LIENTRAP now use, is superior to any film previously used by the Station for clandestine photography. The quality of all base photographs have been increased considerably as a direct result of this new film.

C. General Comments - The Station believes that the GERENDE segment is now operating under optimum organizational arrangements and there are no plans for expansion contemplated at this time. It is expected that SCANTLING will soon be relieved of his interim responsibility for the LIJERSEY team and can concentrate more on his investigative and casing activities. The transfer of the LIJERSEY team to Project LITEMPO reduced Project LIEMPTY activities by an appreciable amount. It is not planned, during the coming year, to expand present LIEMPTY activities.

## VI. COSTS

A. Past Project Year - Station finance records indicate that Project LIEMPTY expended \$19,120.91 during Fiscal Year 1960 (1 December 1959 - 30 June 1960) and has thus far during Fiscal Year 1961 (through 31 October 1960) expended \$16,734.69. Contract Agents salaries and allowances paid by Headquarters bring the total expenditures for 11 months of the project year to approximately \$50,000.00. An additional \$4,000.00 will be obligated during the 12th month of the project year. This will bring total project expenditures to about \$54,000.00 for the entire project year.

B. Ensuing Period - Of the total \$53,000.00 budget, itemized below, \$31,900.00 should be expended during the remainder of Fiscal Year 1961 and the balance, \$21,100.00, should be expended during Fiscal Year 1962. Normal accounting procedures will be used for all expenditures.

SECRET/~~KABOK~~

0004078

INVT 52 of \_\_\_\_\_  
 GEN. SER. \_\_\_\_\_

SECRET/ISAFOR

REPRODUCTION  
PROHIBITEDAGENT

U.S. \$ PER ANNUM

Raymond H. GERENDE C-32743	\$ 5,040.00
Oliver G. SCANTLING C-26803	4,560.00
Louise J. MACRINO C-4452	2,500.00
(@ \$2.02 per hour)	
LIEMPTY-4 C-51872	2,000.00
LIEMPTY-5 C-58482	1,500.00
(@ \$1.75 per hour)	
LIEMPTY-6 C-29848	2,800.00
LIEMPTY-7 No Salary C-35075	-0-
LIEMPTY-8 C-38074	1,800.00
LIEMPTY-9 C-53699	2,800.00
LIEMPTY-10 C-5598	3,600.00
LIEMPTY-11 C-41439	2,500.00
LIEMPTY-12 C-36226	1,800.00
LIEMPTY-13 C-46945	1,800.00
LIEMPTY-14 C-51168	1,800.00
LIEMPTY-19 C-74579	1,000.00
LIEMPTY-24 No Salary C-78022	-0-
Christmas bonuses all personnel	2,500.00
<b>SUB-TOTAL</b>	<b>\$ 38,000.00</b>

OPERATIONAL EXPENSES

Maintenance of MV-2279, 2284 and 2286.	\$ 2,000.00
Operational Travel	500.00
Procurement of Safehouses, post office boxes and renting automobiles.	2,000.00
Purchase of information, identification documents, and bribes.	2,500.00
<b>SUB-TOTAL</b>	<b>\$ 7,000.00</b>

SECRET/ISAFOR

0004079

SECRET ~~KAPOK~~

REPRODUCTION  
PROHIBITED

OPERATIONAL EQUIPMENT

Repair and maintenance of camera equipment.	\$ 500.00
Purchase of replacement photographic equipment and supplies.	2,000.00

SUB-TOTAL 2,500.00

REAL ESTATE

Rent, utilities and maintenance of following safehouses:

*LIMITED	\$ 3,000.00
*LICALLA	1,500.00
LILYRIC	1,000.00

SUB-TOTAL 5,500.00

GRAND TOTAL \$53,000.00

\*LIMITED and LICALLA rents are returned to the Station by LIMOUSINE and credited to Station miscellaneous receipts.

VII. EMERGENCY CONDITIONS

As regards the requirement listed in CSI-F No. 230-60, Annex A, for communications arrangements in the event of "Emergency Conditions," the Station does not anticipate that this project would or could continue to function under its present objectives. However, both principal agents, SCANTLING and GERENDE, would very possibly be worthwhile sources of information to maintain contact with under any adverse conditions. Both of these agents identify themselves, in terms of ideology, motivation and perspective, more as Americans than as Mexican nationals (which they are). It is reasonable to assume, therefore, that SCANTLING and GERENDE would become valuable contacts in any emergency situation.

SECRET ~~KAPOK~~

0004080



SECRET/~~KAPOK~~

-13-

The Station is aware that the previous project renewal stated that emergency communications arrangements were being made. The Station has finally obtained the U. S. addresses of relatives through whom GERENDE and SCANTLING could be contacted under most situations. This information will be forwarded separately.

REPRODUCTION  
PROHIBITED

SECRET/~~KAPOK~~

11 AUG 1952

5-0-6 747

0004081