

Description of JMWAVE Components

Support Branch

The Support Branch provided routine administrative services to JMWAVE. These included finance, logistics and records management and clerical support. The Branch had 19% of JMWAVE's staffing.

Operations Branch

The Operations Branch was divided into two sections, the FI Section and the Special Operations Section. Staffing, consisting of operations officers and clerical support, was 17% of JMWAVE's total.

The FI Section (Foreign Intelligence) was responsible for the collection of intelligence from the target country through covert HUMINT means.

The Special Operations Section was responsible for paramilitary operations.

Covert Action Branch

The Covert Action Branch was responsible for covert propaganda operations. Staffing was 10% of JMWAVE's total and consisted of operations officers and clerical support.

External Operations Branch

The External Operations Branch was responsible for collecting HUMINT on the target country through assets in areas other than the target country. Staffing was 13% of JMWAVE's total and consisted of operations officers and clerical support.

Reports Section

The Reports Section prepared intelligence reports for Headquarters and intelligence community consumers. Staffing was 10% of JMWAVE's total.

Technical Services Section

The Technical Services Section provided photographic support to JMWAVE. Staffing was 6% of JMWAVE's total.

Communicators

The communicators were responsible for secure communications between JMWAVE and Hqs. Staffing was 8% of JMWAVE's total.

"Diff Files" for NARA 2025 Documents Release JFK Assassination Records

Generated using diff-pdf and OpenCV.
Thanks to the Mary Ferrell Foundation and
The Black Vault for their archiving work.

maryferrell.org
theblackvault.com
github.com/vslavik/diff-pdf
opencv.org

This file highlights **differences**
between the 2025 release, and previous releases.

Red: Newly revealed in 2025.
Blue: Present in earlier releases, but not in 2025.
Black: Unchanged between versions.

For Original Documents visit:
archives.gov/research/jfk/release-2025

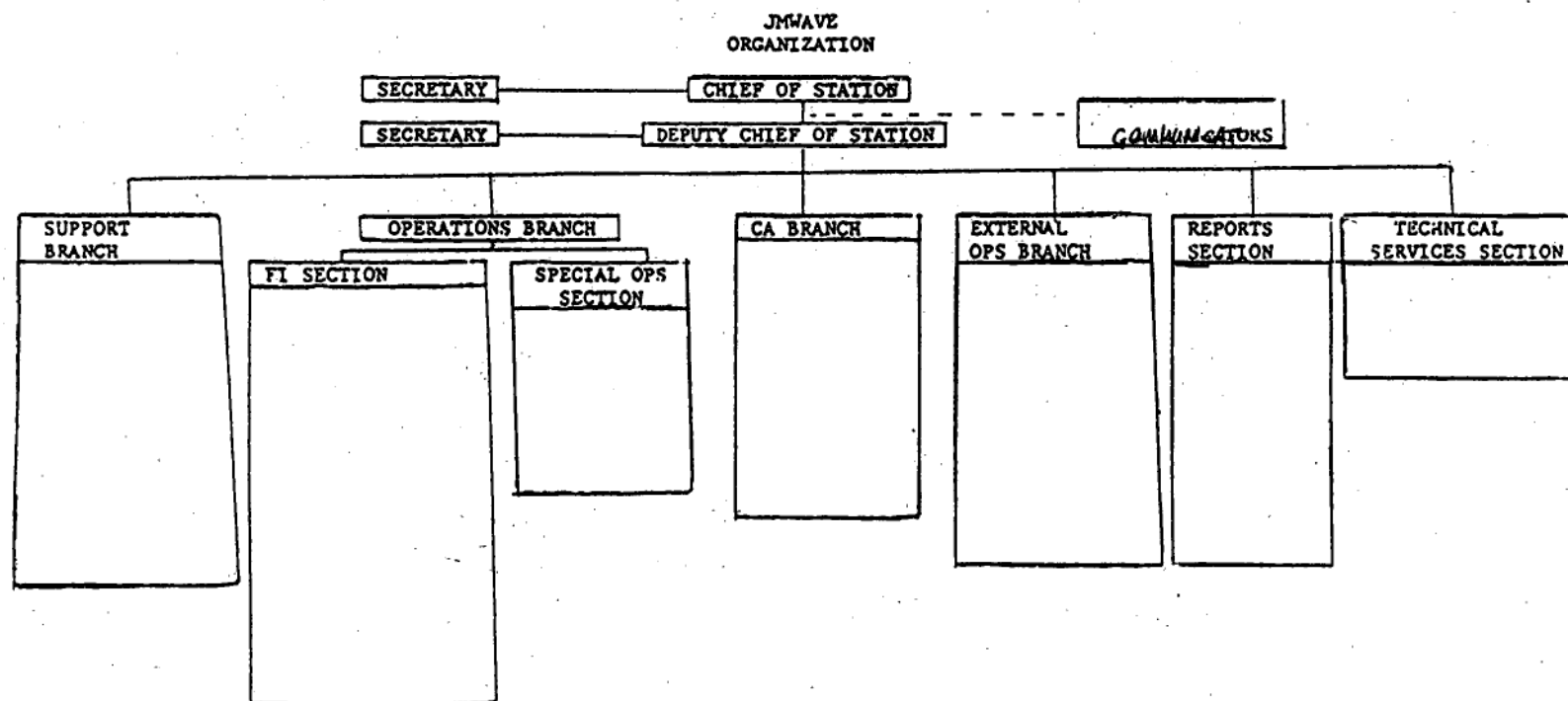
Notes:

Black text on a blue background indicates content
that was previously redacted using black ink.

I did my best to be accurate in revealing what is new,
but please confirm with the original sources
where accuracy is essential.

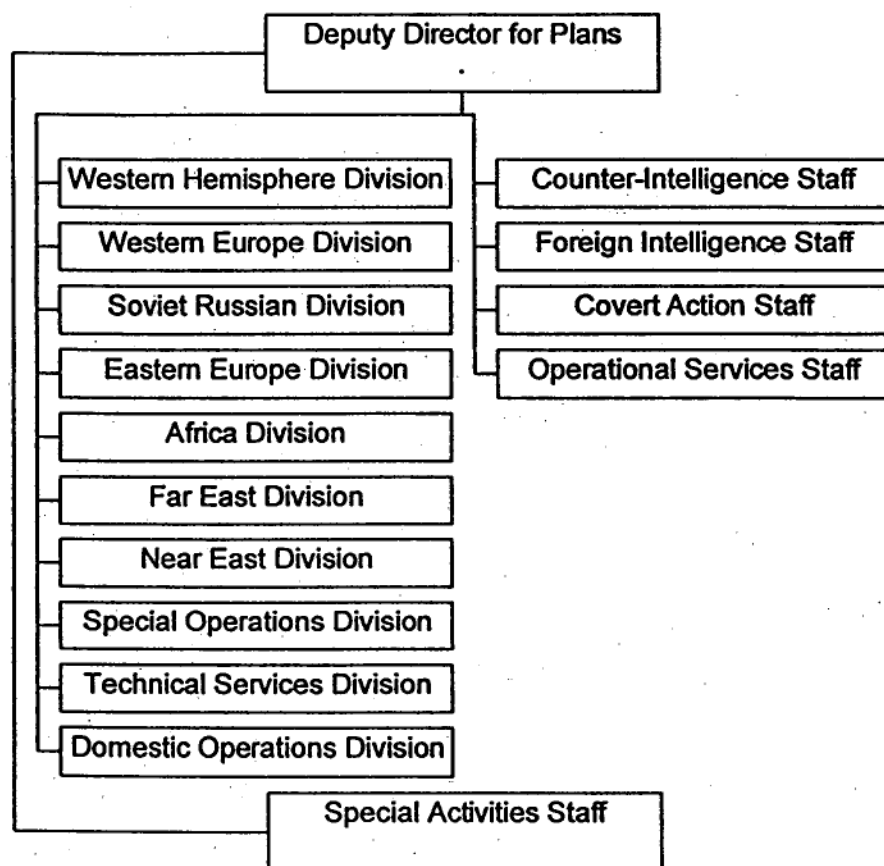
Created by: x.com/hlywdufo

JFKdiffs.com



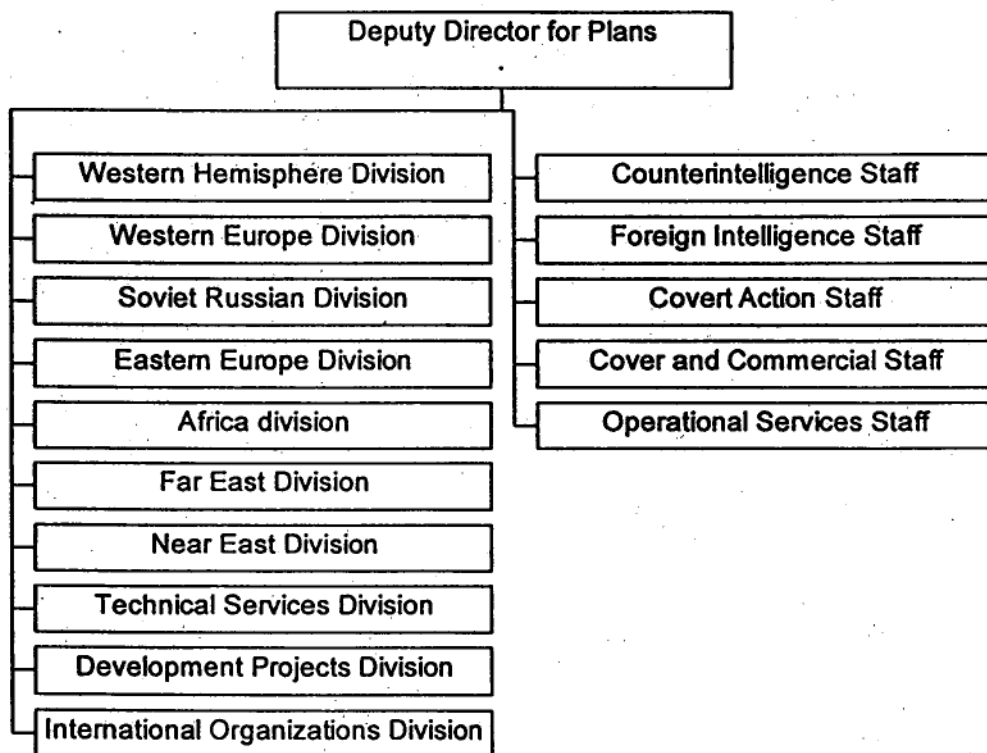
4/10/98 - OKd
vy DO/IRi
EW

DEPUTY DIRECTOR FOR PLANS - 1963



4/19/98 OK by
Do/IRB
EW

DEPUTY DIRECTOR FOR PLANS - 1961



JMWAVE ORGANIZATION

