

---

Zimbabwe is not the only puzzle Rhodesia boasts, for in the hills of Inyanga are the pits and walls, forts and terraces of a long-dead people. Many other strange ruins are scattered over Rhodesia—Khami, Dhlo-Dhlo, Nalatale, Nyahokwe—old names that echo a mysterious past.

Before the first Bantu swept down from the north, there lived in Rhodesia a Stone Age people who have perished but for a pocket or two in the remotest places. They left behind them, on the walls of caves and shelters, their paintings—spiky, graceful figures; hunting scenes; and sensitive animal portraits.

### SCENERY

An area noted for its beauty is the Eastern Highlands, along the Rhodesian border with Moçambique. The main gateway to the highlands is Umtali, which lies cupped within the mountains. A short drive away is the scenic Vumba, an area of ancient forests, sub-tropical plants and arrays of ferns and flower gardens at the Vumba National Park. North of Umtali is Inyanga, a region of mountains, waterfalls, and rushing trout streams. Visitors can walk amidst magnificent scenery, play golf, fish and enjoy the mountain air. Accommodation is provided at National Parks rest cottages and at fine hotels.

South of Umtali is Melsetter, facing the imposing Chimanimani Mountains. The mountain area here is famous for its unique range of plants and flowers.

---

lion, leopard and all species of antelope are to be found and may be hunted by arrangement with the Department of National Parks and Wild Life Management (address on page 49). These hunting areas are normally open from the beginning of May to the end of September, and cater for approximately 200 hunters a year. Non-hunters may view and photograph game in the adjacent game reserves, fish in the Zambezi River, or merely enjoy the magnificent scenery.

For the particular benefit of visitors from abroad, there is a luxury safari controlled hunting area adjacent to the northern and eastern boundaries of the Wankie National Park. This area offers most species of big game and a variety of smaller species. A hunting safari in the area can be combined with game-viewing and photography in the Wankie National Park and sightseeing at the world-famous Victoria Falls. In addition, special fishing trips can be arranged on the upper reaches of Lake Kariba.

An additional controlled hunting area at Tuli, in the south-west of Rhodesia, was opened to hunters in July, 1966. This area will, in future, be open from 1st May to 30th September, each year. Elephant, zebra and four species of antelope may be hunted, as well as game birds.

#### **TOWNS AND CITIES**

After the rural life, most visitors look forward to the sophisticated pleasures of shopping, good food and a night out. There will certainly be a choice of places to visit.

Although a commercial and industrial centre, the flowering trees, colourful parks and contemporary architecture lend an air of spaciousness. Local sightseeing includes the modern museum, the Rhodes National Gallery, the Robert McIlwaine National Park with its lake and game reserve, the landscaped gardens of aloes and cycads at Ewanrigg National Park, the citrus estates at Mazoe and the Balancing Rocks.

**Bulawayo** is Rhodesia's second city, and a major industrial centre. The city is rich in historical associations and is the home of the National Museum. Nearby are the ancient Khami Ruins, while to the south is the Matopos where Cecil Rhodes's grave stands on the summit of a granite hill called "View of the World". Huge formations of granite boulders, dams with excellent fishing, caves with rock paintings and a well-stocked game park make this area popular with visitors.



**Umtali** is the eastern gateway to Rhodesia, and centre of the mountain range along the border with Moçambique. An important distribution and industrial centre, it is an ideal starting point for visits to Inyanga, the Vumba and the Chimanimani Mountains.

Fort Victoria, the oldest town in Rhodesia, was estab-

---

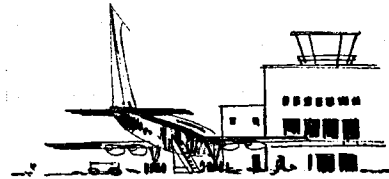
good standard built to conform with their surroundings. Along tourist routes and in country towns there are comfortable hotels whose tariffs are very reasonable. In the rest camps of national parks, visitors are accommodated in charming thatched cottages.

#### **TOURIST TRAVEL**

**Air:** Daily air services link Rhodesia with the rest of the world, landing at Salisbury, the main international airport, and at Bulawayo. Within the country, the national airline operates a comprehensive network of regular flights between Salisbury, Bulawayo, Fort Victoria, the Lowveld, Kariba, Wankie, and the Victoria Falls. Charter companies also offer flights at reasonable costs to all main airports and to many landing fields not served by the major airline.

**Road:** Inter-city and inter-territorial roads are of first-class standard, and all tourist centres are linked by tarred roads. A wide range of package and individual tours is provided by experienced operators, who also offer self-drive car-hire at all main centres. A luxury coach service operates through Rhodesia, connecting with Johannesburg to the south and Lusaka to the north.

**Rail:** Rhodesia Railways link the main centres of Rhodesia and connect with the rail systems of the neighbouring countries of South Africa, Mozambique and Zambia. A fast diesel-car service operates between Salisbury, the capital, and Umtali, the centre of the Eastern Highlands. All main passenger trains have full dining-car facilities and sleeper



## Immigration

A YOUNG country such as Rhodesia needs many skilled immigrants, as well as people with money to invest, if the development and exploitation of its great potential is to provide a better standard of living for all its inhabitants. Employment and investment opportunities are, therefore, attractive, and the future is bright. There is no shortage of unskilled labour in Rhodesia.

### IMMIGRANTS' RECEPTION AND SETTLEMENT SERVICE

This service will advise intending immigrants about their employment prospects in Rhodesia and, where appropriate, put them in touch with employers who are or may be seeking staff. After arrival in Rhodesia, immigrants will be assisted in every way possible with any settlement problems. Requests for information about immigration procedures, employment prospects and any other immigration matters should be addressed to The Under-Secretary, Department of Immigration Promotion, Private Bag 711, Causeway, Salisbury, Rhodesia. (Offices of the Department are situated on the Ninth Floor, Ambassador House, Union

---

Secretary, Immigrants' Selection Board, P.O. Box 8018,  
Causeway, Salisbury, Rhodesia.

No arrangements should be made for travel to Rhodesia before a residence permit has been issued. Such permits are not required of tourists or visitors. There is, however, no objection to applications for residence permits being made by persons after they have entered as tourists or visitors, provided such applicants are able to comply with the immigration requirements for immigrants.

The possession of a residence permit does not confer absolute right of entry into Rhodesia. In addition, every person, on arrival, must be able to comply with the normal immigration requirements. These are the following. He must—

- (a) produce to an immigration officer a valid passport;
- (b) be literate in a European language;
- (c) be of good character;
- (d) be in sound physical and mental health.

Aliens are required to register in terms of the Aliens Act, 1966, with the Chief Registration Officer, who is also the Chief Immigration Officer.

Visas may be required in certain cases.

Further inquiries from interested persons will be welcomed by the Department of Immigration Promotion.

#### **VISITORS**

A British visitor to Rhodesia is admitted without a visa.

Chief Immigration Officer. No visitor may remain longer than 12 months in Rhodesia unless he has applied for and been granted a residence permit.

Aliens wishing to enter Rhodesia as business visitors or tourists are admitted under conditions similar to those for British visitors but, in addition, must be in possession of visas, where applicable, and must obtain visitors' entry certificates from an immigration officer on arrival at the border.

Employers who wish to introduce alien employees for the purpose of temporary employment must make prior application to the Chief Immigration Officer.

A person admitted to Rhodesia as a visitor who has not obtained a residence permit may not take employment without first obtaining permission from the Immigrants' Selection Board in Salisbury.

#### **TEMPORARY EMPLOYMENT PERMITS**

Temporary employment permits may be issued by the Chief Immigration Officer, to whom application should be made by an employer who wishes to engage temporary staff from outside Rhodesia. A holder of a temporary employment permit must be prepared to leave Rhodesia when his permit expires.

Holders of temporary permits are required to give proof, in the form of a radiologist's certificate, that they are free from pulmonary tuberculosis.

---

## **Press and Broadcasting**

**D**AILY and Sunday newspapers are published in Salisbury and Bulawayo. In other centres, newspapers are published thrice, twice or once weekly. A financial newspaper with wide coverage is published monthly in Salisbury, and there are many other periodicals dealing with agriculture, industry, commerce, mining, travel, sport and other topics.

### **BROADCASTING AND TELEVISION**

Broadcasting is in the hands of the Rhodesia Broadcasting Corporation, a statutory body set up by Act of Parliament under which it operates as an autonomous and independent body. There are transmitters at Salisbury, Bulawayo and Gwelo, the last being the main short-wave station. There are also smaller transmitters at Umtali, Gatooma, Que Que and Fort Victoria. Hours of transmission are approximately from 6 a.m. to 11 p.m. daily.

Television has proved popular in the areas served by the two transmitters and plans have been made to extend the coverage. Normal television transmission times are from 5.30 p.m. to 11 p.m. daily.

The number of current radio and television licences held by members of the public (December, 1966) was as follows:



## **Banks**

**T**HE RESERVE BANK of Rhodesia is situated in Jameson Avenue, Salisbury (P.O. Box 1283). Other banks conducting business in Rhodesia are as follows:

### **COMMERCIAL BANKS**

**Barclays Bank D.C.O.:** Head office, corner Manica Road/Inez Terrace, Salisbury (P.O. Box 1279), with branches throughout Rhodesia.

**National and Grindlays Bank Limited:** Main Rhodesian branch, 64 Baker Avenue, Salisbury (Private Bag 191H), with branches in the main centres.

**Netherlands Bank of South Africa Limited:** Head office, corner Angwa Street/Baker Avenue, Salisbury (P.O. Box 3198), with branches in the main centres.

**Ottoman Bank:** 59 Jameson Avenue, Salisbury (P.O. Box 2700).

**The Standard Bank Limited:** Head office, corner Second Street/Baker Avenue, Salisbury (P.O. Box 373), with branches throughout Rhodesia.

### **MERCHANT BANKS**

**Merchant Bank of Central Africa Limited:** Century House West, Baker Avenue, Salisbury (P.O. Box 3200).

**Rhodesian Acceptances Limited:** Pearl Assurance House, Jameson Avenue, Salisbury (P.O. Box 2786).

### **THE LAND BANK**

---

## Some Useful Addresses

**Ministry of Information, Immigration and Tourism:** P.O. Box 8232, Causeway, Salisbury.

**Ministry of Commerce and Industry:** Private Bag 708, Causeway, Salisbury.

**Ministry of Mines and Lands:** Private Bag 709, Causeway, Salisbury.

**Ministry of Agriculture:** Private Bag 701, Causeway, Salisbury.

**Ministry of Finance:** Private Bag 705, Causeway, Salisbury.

**Ministry of Labour and Social Welfare:** Private Bag 707, Causeway, Salisbury.

**Ministry of Internal Affairs:** Private Bag 702, Causeway, Salisbury.

**Ministry of Education:** P.O. Box 8024, Causeway, Salisbury.

**Department of National Parks and Wild Life Management:** P.O. Box 8365, Causeway, Salisbury.

**National Archives:** P.O. Box 8043, Causeway, Salisbury.

**Central Statistical Office:** P.O. Box 8063, Causeway, Salisbury.

**Controller of Customs and Excise:** Private Bag 715, Causeway, Salisbury.

**Natural Resources Board:** P.O. Box 8070, Causeway, Salisbury.

**Salisbury Chamber of Industries:** Friern House, 7 Speke Avenue, Salisbury.

**Umtali Chamber of Industries:** Secretary, Colonel H. G. Seward, P.O. Box 631, Umtali.

#### **CHAMBERS OF COMMERCE**

**Associated Chambers of Commerce of Rhodesia:** P.O. Box 1934, Salisbury.

**Bindura Chamber of Commerce:** P.O. Box 32, Bindura.

**Bulawayo Chamber of Commerce:** P.O. Box 1292, Bulawayo.

**Gatooma Chamber of Commerce:** P.O. Box 67, Gatooma.

**Gwelo Chamber of Commerce:** P.O. Box 142, Gwelo.

**Hartley Chamber of Commerce:** P.O. Box 120, Hartley.

**Karoi Chamber of Commerce:** P.O. Box 115, Karoi.

**Marandellas Chamber of Commerce:** P.O. Box 53, Marandellas.

**Que Que Chamber of Commerce:** P.O. Box 3, Que Que.

**Salisbury Chamber of Commerce:** P.O. Box 1934, Salisbury.

**Sinoia Chamber of Commerce:** P.O. Box 278, Sinoia.

**Umtali Chamber of Commerce:** P.O. Box 281, Umtali.

**Victoria Chamber of Commerce:** P.O. Box 140, Fort Victoria.

#### **LOCAL PUBLICITY ASSOCIATIONS AND INFORMATION BUREAUX**

**Bulawayo and District Publicity Association:** Post Office

**Manicaland Development and Publicity Association:** Cecil Hotel Building, Main Street, Umtali (P.O. Box 69).

**Salisbury and District Publicity Association:** 82 Rezende Street (opposite bus station), Salisbury (P.O. Box 1483).

**South-Western Regional Development and Publicity Association:** P.O. Box 72, Gwanda.

**Victoria Falls and Wankie District Publicity Association:** The Tourist Office, P.O. Victoria Falls.

## **Tourist Board Offices**

**T**HE head office of the Rhodesia National Tourist Board is situated in Cecil House, 95 Stanley Avenue, **Salisbury** (P.O. Box 8052; telephone 29051), close to one of Salisbury's leading hotels and next door to the Travel Centre.

In South Africa there are Rhodesia National Tourist Board offices in **Johannesburg** (African Life Building, 24A Joubert Street—P.O. Box 9398; telephone 225381), **Durban** (Salisbury House, Salisbury Arcade—P.O. Box 1689; telephone 66092), and **Cape Town** (1016 Tulbagh Centre, Hans Strijdom Avenue—P.O. Box 2465; telephone 41-2774).

In Moçambique, a Rhodesia National Tourist Board office may be found in **Lourenço Marques** (Predio Lusitana, Avenida Don Luis—5° Andar—C.P. 2229; telephone 3319).

## **Rhodesian External Offices**

### **REPUBLIC OF SOUTH AFRICA**

Rhodesian Diplomatic Mission, United Dominions Corporation Building, 28 Church Square, Pretoria (P.O. Box 153).

Trade Commissioner for Rhodesia, 620 Maritime House, Loveday Street, Johannesburg.

Rhodesian Information Office, The Rhodes Building, 150 St. George's Street, Cape Town (P.O. Box 2831).

### **PORTUGAL**

Rhodesian Diplomatic Mission, Rua Duque de Palmela No. 2-7°, Lisbon 2.

### **MOÇAMBIQUE**

Consulate-General for Rhodesia, 509-511 Predio Lusitana, Avenida Don Luis, P.O. Box 1586, Lourenço Marques.  
Consular Agent of Rhodesia, P.O. Box 208, Beira.

### **BRITAIN**

Rhodesia House, 429 Strand, London, W.C.2.

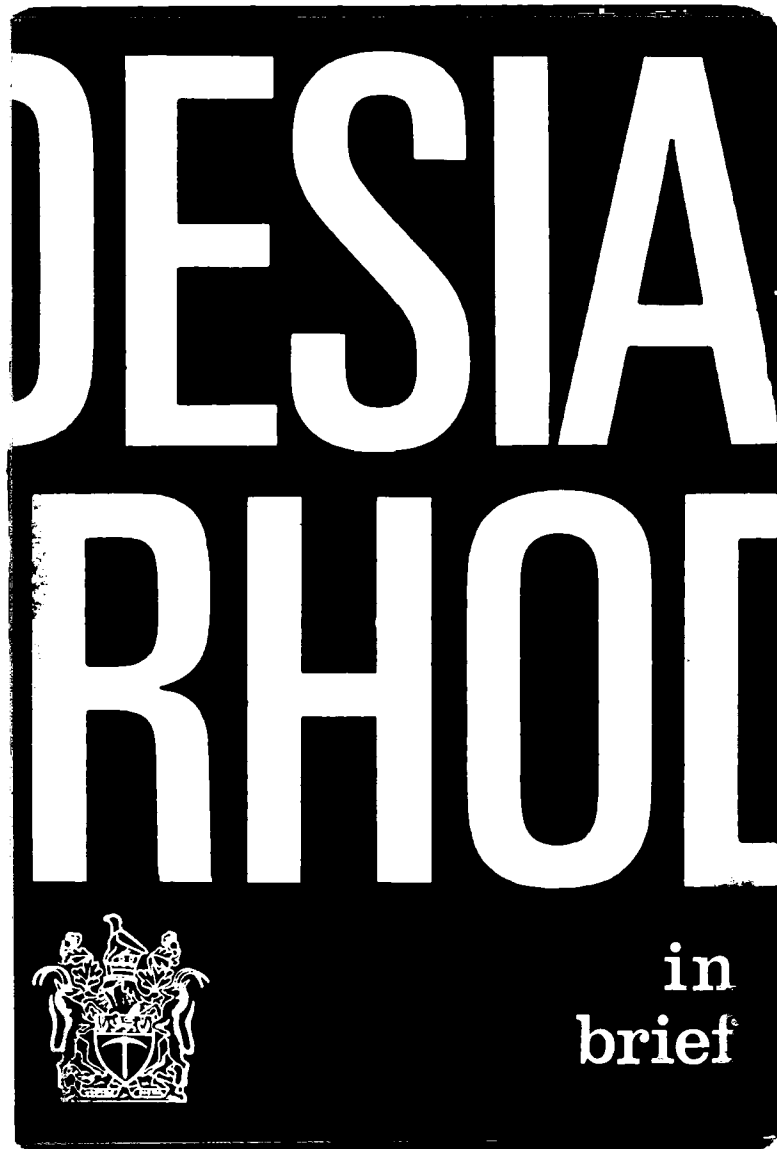
### **UNITED STATES OF AMERICA**

\*Rhodesian Information Office, 2852 McGill Terrace, N.W., Washington 8, D.C.

### **AUSTRALIA**

Rhodesian Information Office, P.O. Box 125, Carlton South, Melbourne, N.3, Victoria.

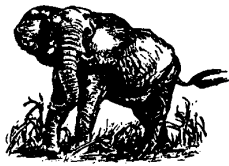
*fifty-two*





American - Southern Africa Council

SUITE N-1 · 800 FOURTH STREET, S.W. · WASHINGTON, D.C. 20024



# American-Southern Africa Council

(202) 347-0500 • SUITE N-1 • 800 FOURTH STREET, S. W. • WASHINGTON, D. C. 20024

We know that you will be pleased to read Prime Minister Ian Smith's message to Rhodesia's friends, reprinted in the enclosed newsletter. "Rhodesia will never forget," he said, "those who have stood by us in our difficult days and who now go forward with us in our advance to final victory."

The American-Southern Africa Council is proud to stand with you beside those fine people. You have our appreciation for your interest in our efforts on their behalf...and our sincerest thanks for the support which has made this organization possible.

Best wishes for a fine holiday season and for the very best that 1968 can bring to you and yours.

Sincerely,

Gloria Walker  
for the Staff

gw/encl.

*Sent this to  
about 20  
with personal  
stopped 1/2 gw  
Also NE Fred  
Lance*



2025 RELEASE UNDER E.O. 14176