

FEDERAL BUREAU OF INVESTIGATION

1

6/7/68

Date _____

ROBERT HUNTLEY, 6012 Condon Street, Los Angeles, California, advised that he is self-employed doing business as Huntley Enterprises, Inc., with offices located in the arcade foyer, Ambassador Hotel, Wilshire Boulevard, Los Angeles, California.

He is the unofficial photographer for the Ambassador Hotel.

During the early morning hours of June 5, 1968, he was seated behind an open panel in the sloping ceiling of the Embassy Room at the Ambassador Hotel taking photographs of general interest of the KENNEDY contingent and supporters who were in the room below him. He was approximately 15 feet above the floor and approximately 50 feet from the podium directly across the room from ROBERT KENNEDY.

He was using a Topcon 35 mm camera with automatic diaphragm and shooting at 1/60 of a second. The camera was equipped with two lenses on a rotating swivel. One was a 135 mm lens and the other was a 53 mm wide-angle lens. He was using Tri-X black and white film.

He furnished three photographs and three negatives which were taken through the 53 mm wide-angle lens which were taken just prior to the shooting of Senator KENNEDY. He also furnished three photographs and three negatives taken through the 135 mm lens which were taken just subsequent to the shooting. All photographs show the crowd around the podium on the floor of the Embassy Room in the Ambassador Hotel.

The above photographs follow.

On 6/7/68 at Los Angeles, California File # Los Angeles 56-156
by SA WALTER M. BRADY:jmk Date dictated 6/7/68

This document contains neither recommendations nor conclusions of the FBI. It is the property of the FBI and is loaned to your agency; it and its contents are not to be distributed outside your agency.



--38--



2025 RELEASE UNDER E.O. 14176



2025 RELEASE UNDER E.O. 14176



2025 RELEASE UNDER E.O. 14176



2025 RELEASE UNDER E.O. 14176



2025 RELEASE UNDER E.O. 14176

FEDERAL BUREAU OF INVESTIGATION

Date 6/8/68

FRANS STALPERS, Assistant Manager of the Ambassador Hotel, 3400 Wilshire Boulevard, was contacted to arrange for the photographing of the interior and exterior areas of the hotel which were involved directly or indirectly in the shooting of Senator ROBERT F. KENNEDY.

STALPERS directed SAA GREINER and FBI Photographer RICHARD FERNANDEZ to the Embassy Ballroom in which he said Senator KENNEDY had made his victory speech during the early morning of June 5, 1968, following the California State Primary Election.

STALPERS said that following Senator KENNEDY's speech from the speakers platform in front of the stage area of the Embassy Ballroom, the Senator made his exit through the stage area. After leaving the stage through double doors at the rear, he made a turn to the right in a corridor which leads to the serving kitchen area. STALPERS advised that he did not personally witness the route of exit being used by Senator KENNEDY, but he learned the details of same, he said, from talking to several other employees who were there.

STALPERS directed SAA GREINER and Photographer FERNANDEZ over the entire area where Senator KENNEDY had been immediately prior to the shooting and the route taken by him to the point where he was hit. STALPERS also provided copies of the floor plans of the hotel's Lobby and Casino Floors; the Embassy Ballroom being located on the Lobby Floor level, and the Ambassador Ballroom on the Casino level. He pointed out that the Senator KENNEDY party was utilizing both the Embassy and Ambassador Ballrooms.

-44-

On 6/7/68 at Los Angeles, California File # 56-156

by SAA ALFRED C. GREINER Date dictated 6/8/68

This document contains neither recommendations nor conclusions of the FBI. It is the property of the FBI and is loaned to your agency; it and its contents are not to be distributed outside your agency.

LA 56-156

ACG/g

1

Pertinent portions of the floor plans furnished by FRANS STALPLER have been reproduced and copies precede each photograph which was taken. Each copy of the floor plan shows by means of a directional arrow where the picture was taken. Additionally the area covered by the photograph has been marked in blue line showing general area of view taken.

Following the photograph is a chart which shows the speakers platform, stage area, hallway and vestibule which leads to the kitchen serving area in which Senator KENNEDY was shot. The scale of this chart is approximately $1\frac{1}{2}$ inch representing 20 feet. The x marks shown on the chart show locations where individuals were shot. The x mark in front of the ice machine reportedly represents the area where Senator KENNEDY had fallen after being shot.

LA 56-156

ACG/g

2

A description of the photographs taken and which follow is as follows:

- A-1 Outside view looking south showing far east end of the Embassy Ballroom (Open fire door) and the west end of the Ambassador Ballroom which is one floor below (Closed fire doors).
- A-2 A close up view of area described in A-1 above.
- A-3 Outside view taken from roof of Boulevard Room looking towards southeast which shows open fire door of the Embassy Ballroom. This fire door is located at the far northwest corner of the Embassy Ballroom.
- A-4 Outside view taken from roof of Ambassador Ballroom looking towards northeast and showing fire door of Embassy ballroom described in A-3 above.
- A-5 Outside view looking directly north showing fire escape steps and doors of the Ambassador Ballroom. Fire escape steps leading upwards from the fire doors lead to southwest corner fire door of Embassy Ballroom.
- A-6 Outside view taken from roof of Sunset Room looking towards northeast and showing fire doors and steps of the southwest corner of the Embassy Ballroom which lead down to fire door of the Ambassador Ballroom and then down to the street level.
- A-7 Same view of above area but showing portion of fire door of Ambassador Ballroom in far left corner of photograph.
- A-8 Outside view taken from roof of Ambassador Ballroom looking north and on same level of Embassy Ballroom. Location is just west of southwest fire doors of Embassy Ballroom. The stairs on roof lead to area as seen in photographs A-3 and A-4.

- B-1 Interior view of Embassy Ballroom looking from southwest corner to the center speaker platform area.
- B-2 Interior view of Embassy Ballroom looking in northerly direction to speaker's platform area. The speaker's platform was erected in front of the stage area shown in photo.
- B-3 Interior view of Embassy Ballroom looking from southeast corner towards speaker's platform area.
- B-4 Interior view of Embassy Ballroom looking from speaker's platform area to southwest corner of room and open fire door.
- B-5 Close up view of area described in B-4 above.
- C-1 Interior view of hallway which is located directly behind stage and speaker's platform area. View taken shows doors at rear of stage and in the distance are closed doors leading to serving kitchen area.
- C-2 Close up view of doorway leading into kitchen serving area.
- D-1 Interior view of kitchen serving area taken from far eastern end and looking towards the south showing doorway which leads to rest rooms and main entrance to Embassy Ballroom.
- D-2 Interior view of kitchen serving area taken from far eastern wall and looking west towards doors which Senator KENNEDY reportedly had entered.
- D-3 Interior view of area described above in D-2 but slightly more in a westerly direction.
- D-4 Interior view of kitchen serving area taken from the approximate location at which Senator KENNEDY was shot. Photograph shows ice machines to the left and the doorway leading into area from hallway behind stage and speaker's platform.

- D-5 Interior view of kitchen serving area looking south showing ice machines. The x marks on floor reportedly show locations in which the injured came to rest. The x shown on floor to far left reportedly is the location that Senator KENNEDY had fallen after being shot.
- E-1 View taken inside kitchen serving area showing doorway area leading into kitchen from the stage area. In lower right corner the photo shows two bullet holes which are circled. The portion of the panel missing also reportedly contained a bullet.
- E-2 A close up view of the two bullet holes of area described above.
- E-3 Close up view of two bullet holes which is located in center door frame inside kitchen serving area and looking towards direction of back of stage area.
- E-4 Close up view of upper hinge on door leading into kitchen area from back of stage area. View shows reported location of another bullet mark which struck hinge.
- F-1 Interior view behind stage and speakers platform area looking in westerly direction and showing entrance to stairway which leads down to the Casino level and the Ambassador Ballroom.
- F-2 View taken from Casino Level or Ambassador Ballroom floor level showing base of stairway which leads up to Embassy Ballroom.
- F-3 View taken from Ambassador Ballroom floor level in a northwesterly direction which shows fire doors leading to fire stairs shown in photos A-1 and A-2.
- G-1 View taken from Ambassador Ballroom floor level showing foyer area south of entrance to the Ambassador Ballroom which leads to fire doors shown in photographs A-5 and A-7.
- G-2 Close up view of photographed area described in G-1 above.

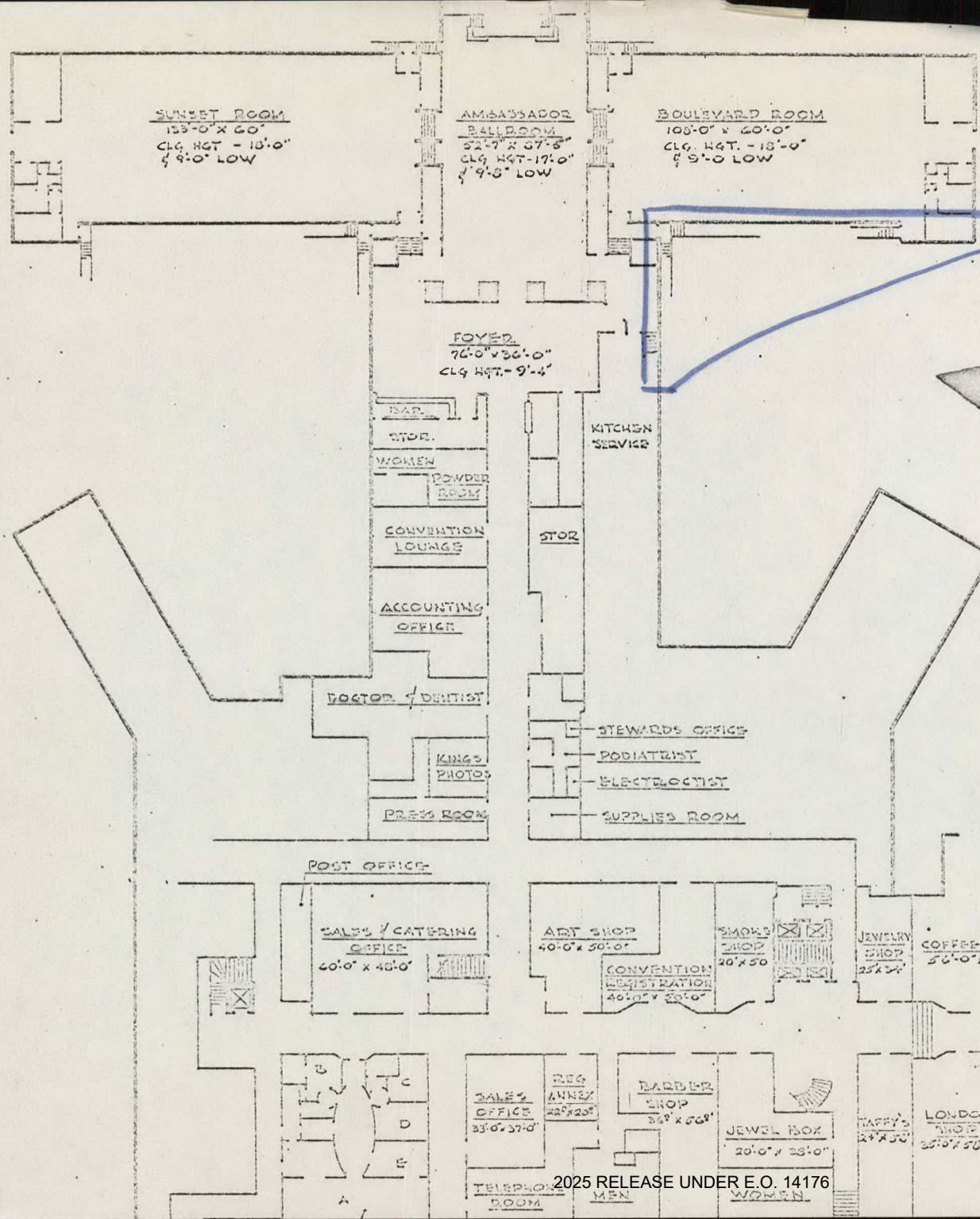


Photo A-1

AMBASSADOR HOTEL
Los Angeles, California

CASINO FLOOR



2025 RELEASE UNDER E.O. 14176

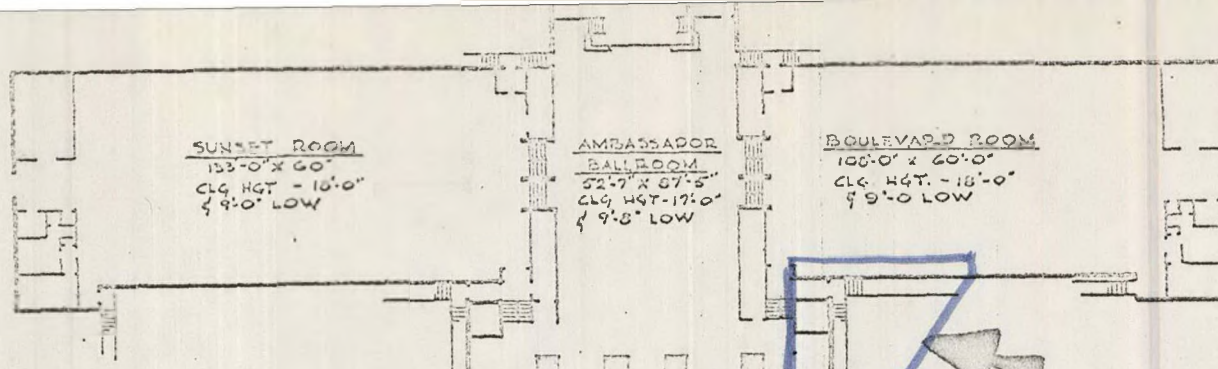
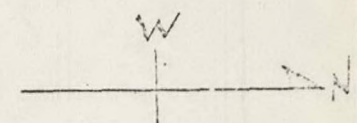


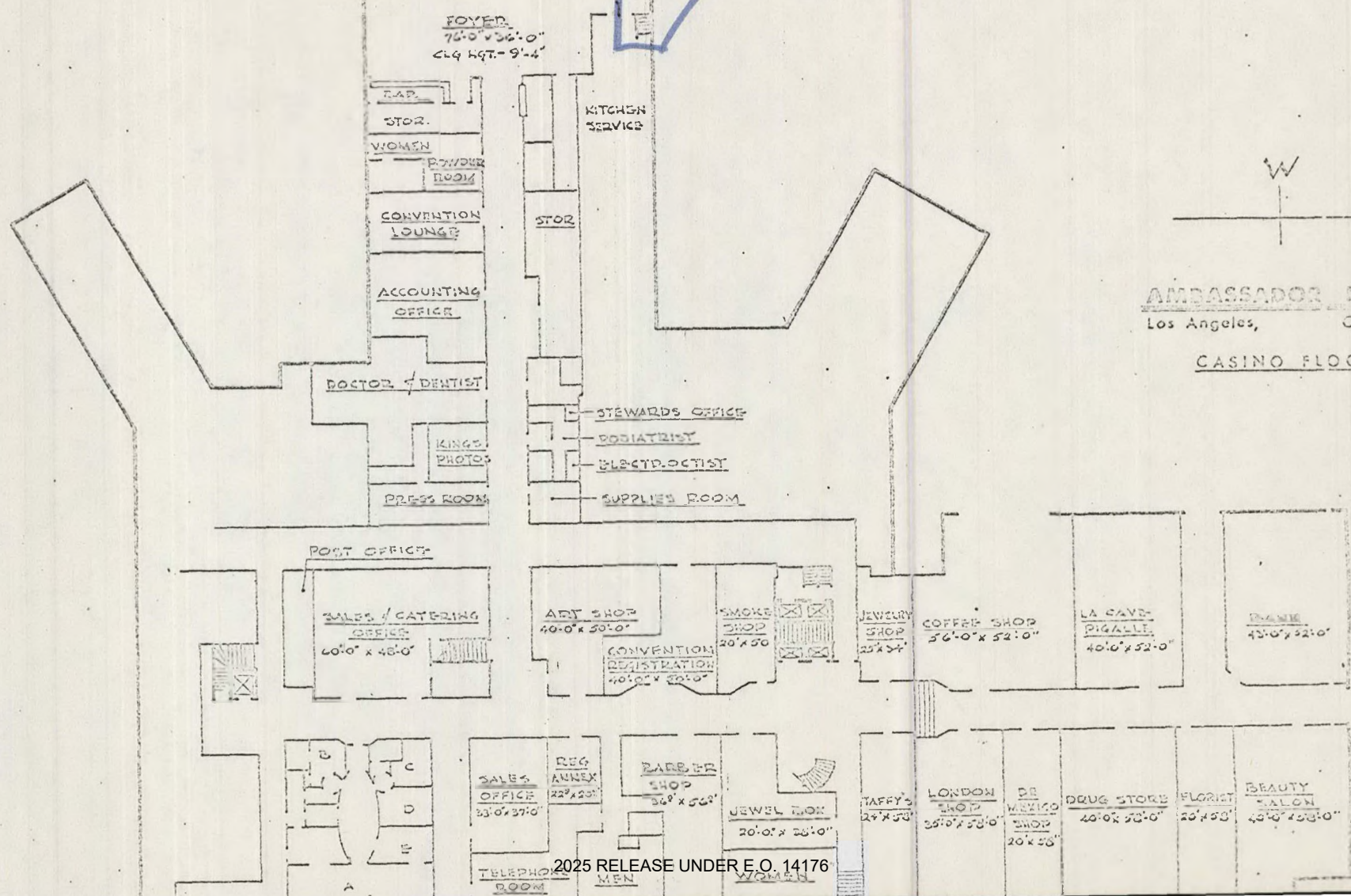
Photo A-2

51



AMBASSADOR HOTEL
Los Angeles, California

CASINO FLOOR





2025 RELEASE UNDER E.O. 14176

LOBBY FLOOR

EMBASSY BALL ROOM
98'-8" x 145'-0"
CLG HGT - 17'-0"
4' 12'-0" LOW

GOLD ROOM
15'-0" x 36'-4"
CLG HGT - 8'-1"

EMBASSY FOYER
CLG HGT - 9'-6"
4' 8'-6" LOW

TO KITCHEN

REGENCY ROOM
17'-6" x 55'-3"
CLG HGT - 12'-10"

DOLPHIN COURT

LADIES

MEN

COLONIAL ROOM
58'-3" x 24'-10"
CLG HGT - 12'-10"

DESK

LE CAPE LAUTREC
78'-6" x 35'-3"

FOYER

LIDO ROOM
14'-0" x 44'-0"
CLG HGT - 11'-4"
7' 8'-8" LOW

LIDO PATIO

FOYER
CLG HGT 11'-9"

WEST VENETIAN ROOM
65'-0" x 28'-0"
CLG HGT - 12'-10"
4' 9'-11" LOW

EAST VENETIAN ROOM
46'-0" x 42'-0"

GARDEN ROOM
18'-3" x 17'-6"
CLG HGT - 9'-4"

LOBBY

PALM ROOM

PALM COURT

MANAGER

MAITRE D'HOTEL

ASST MGR

2025 RELEASE UNDER E.O. 14176



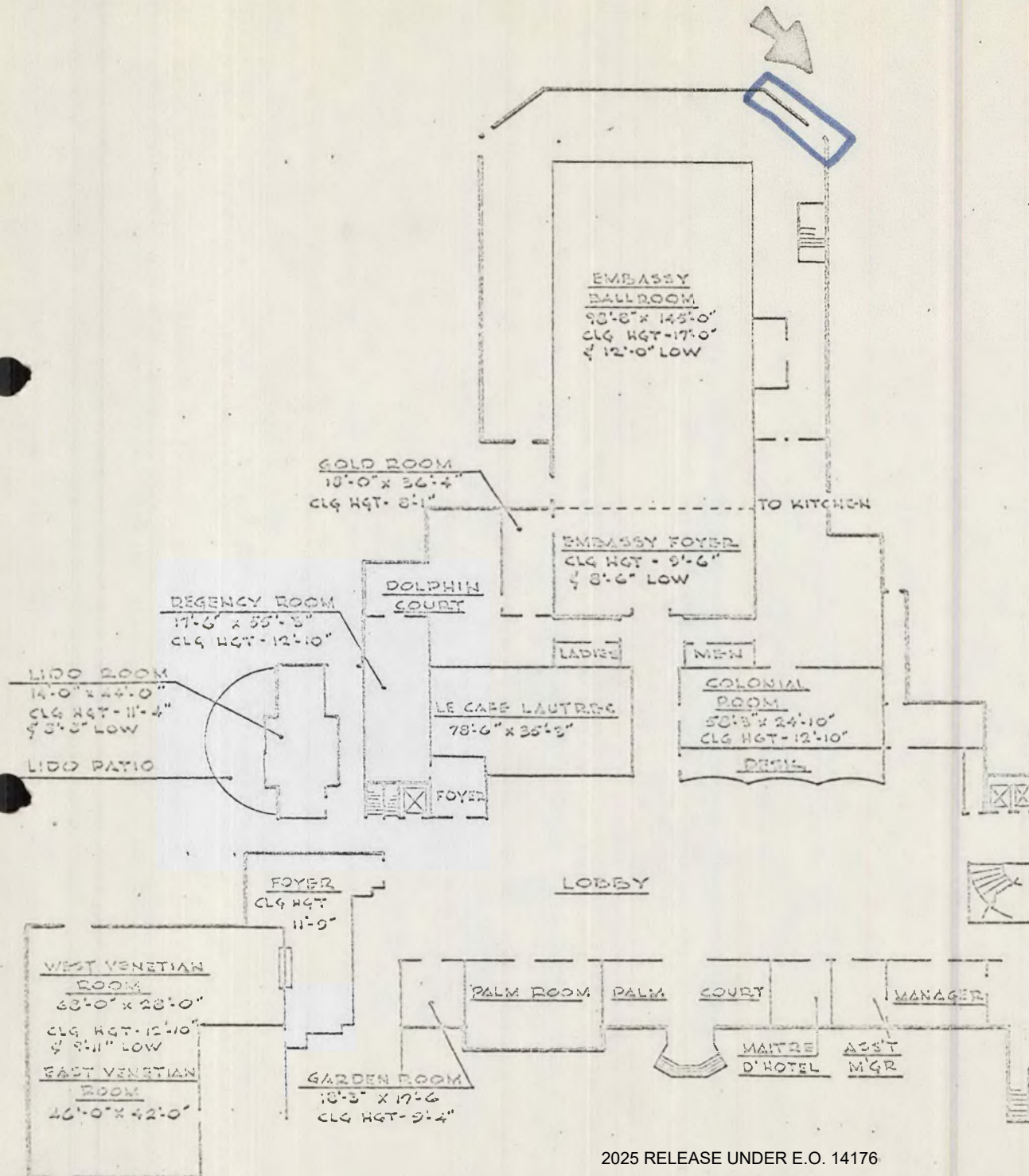
2025 RELEASE UNDER E.O. 14176

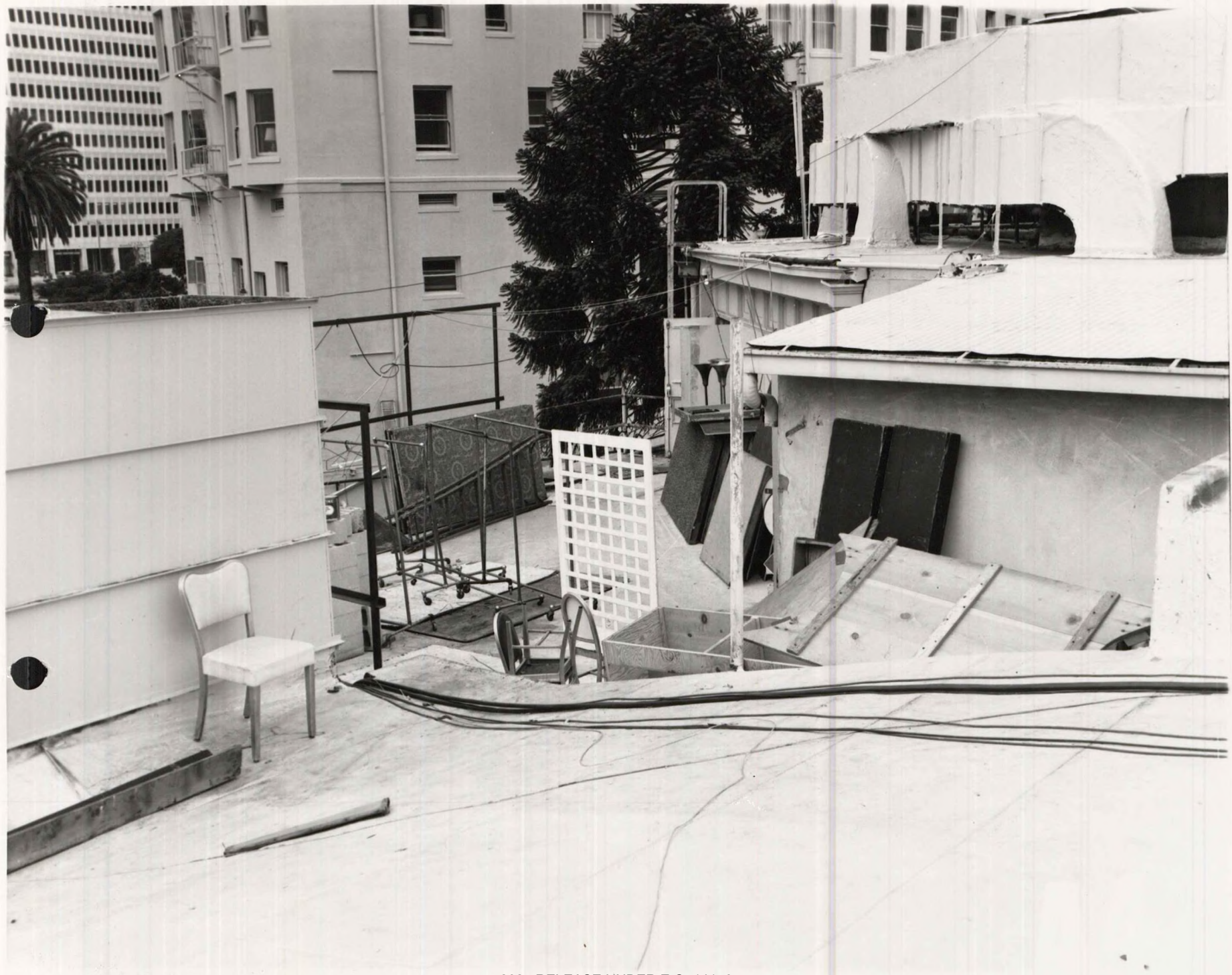
Photo A-4



AMBASSADOR HOTEL
Los Angeles California

LOBBY FLOOR





-95-

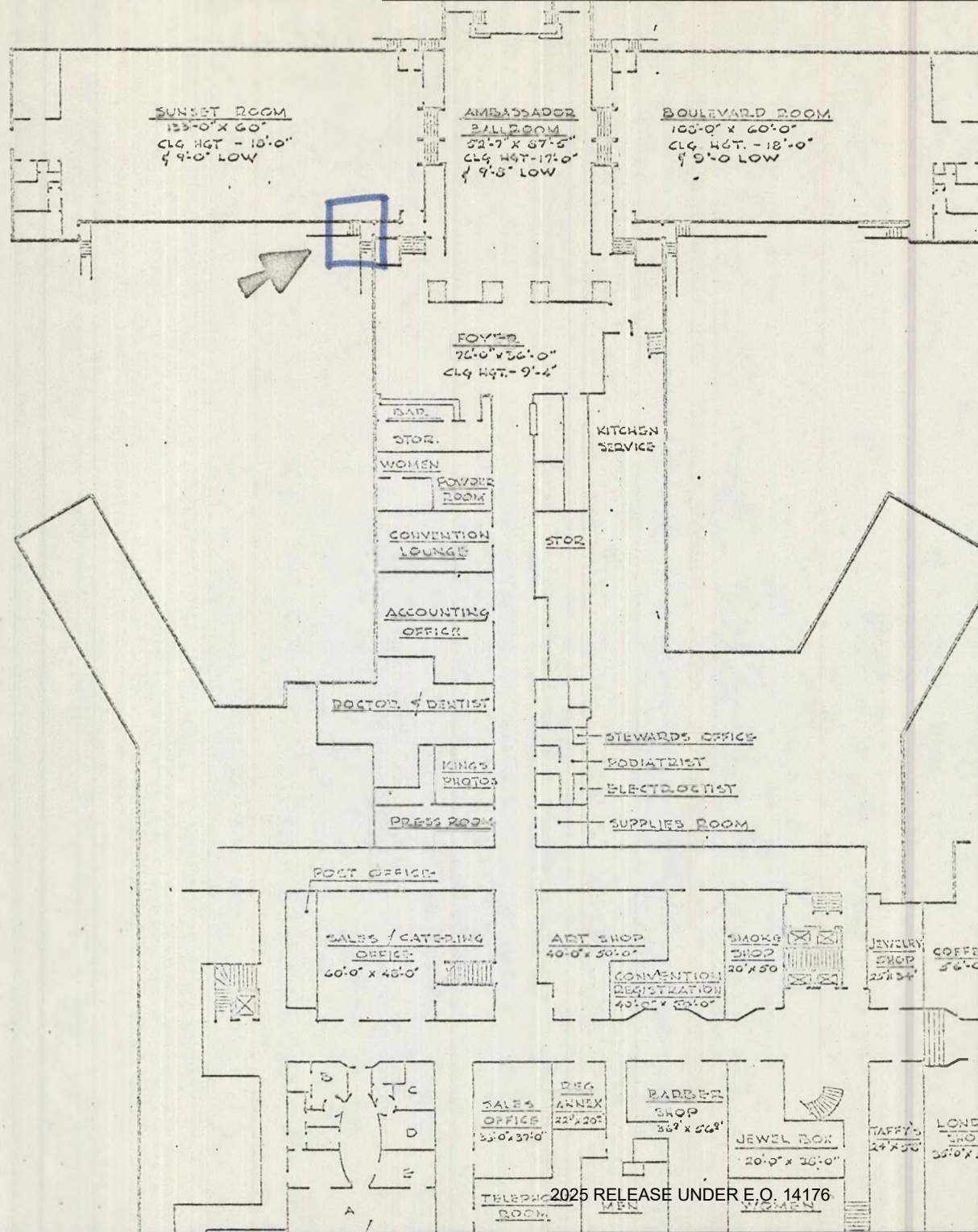
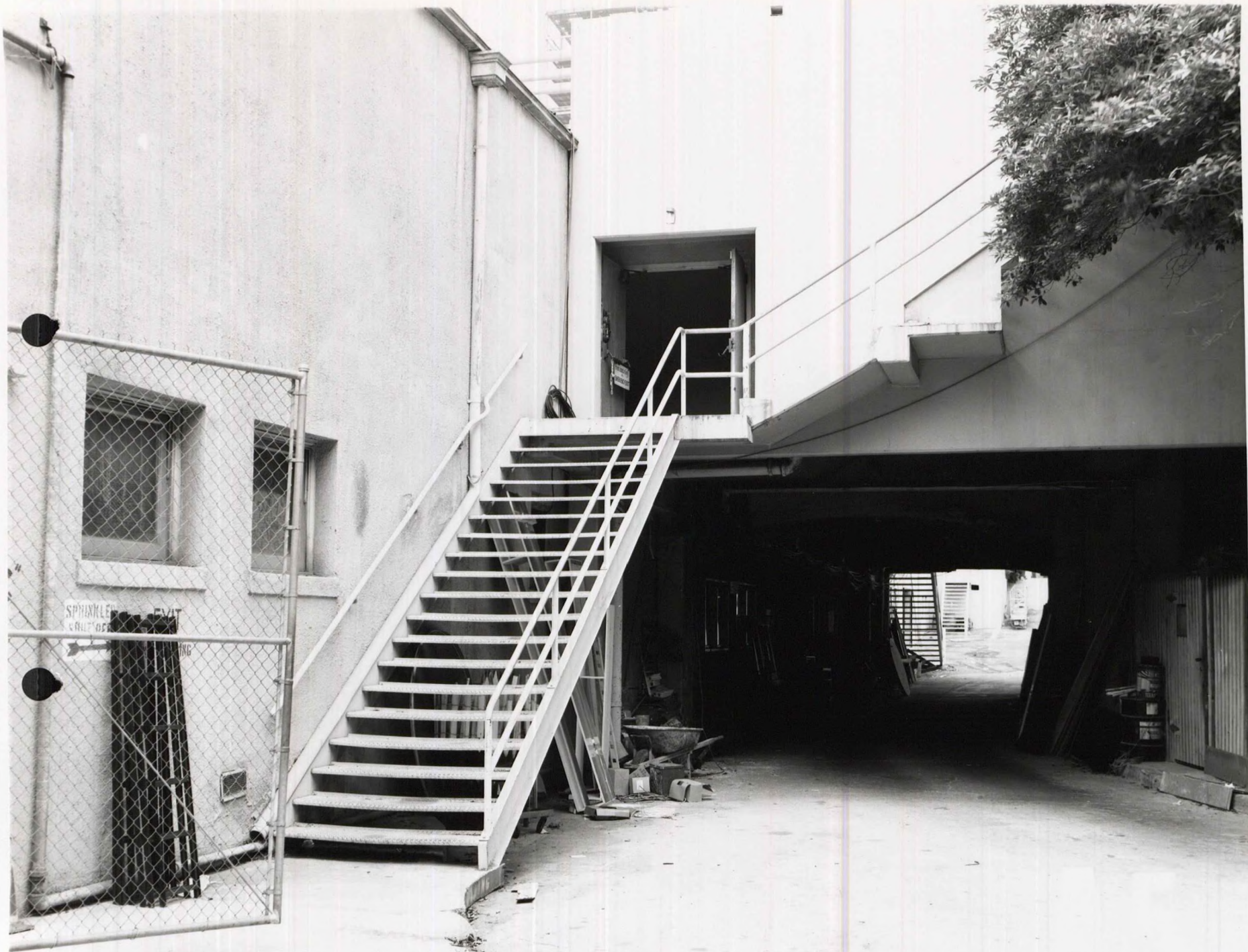


Photo A-5

AMBASSADOR HOTEL
Los Angeles, California

CASINO FLOOR



2025 RELEASE UNDER E.O. 14176

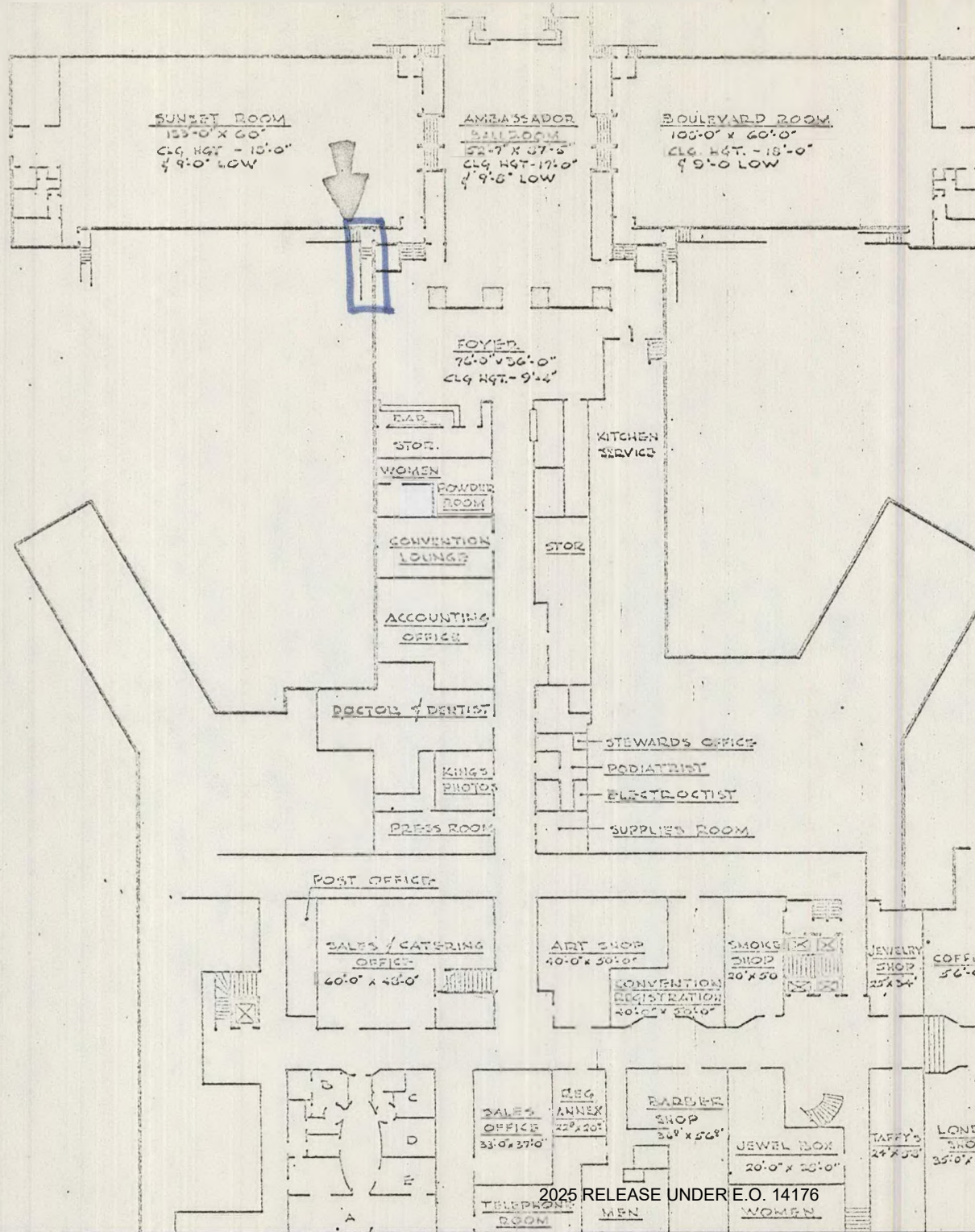
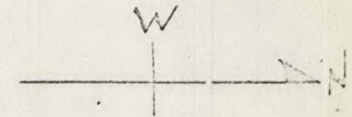


Photo A-6



AMBASSADOR HOTEL
Los Angeles, California

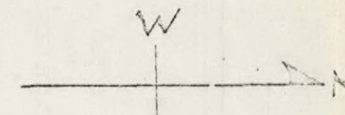
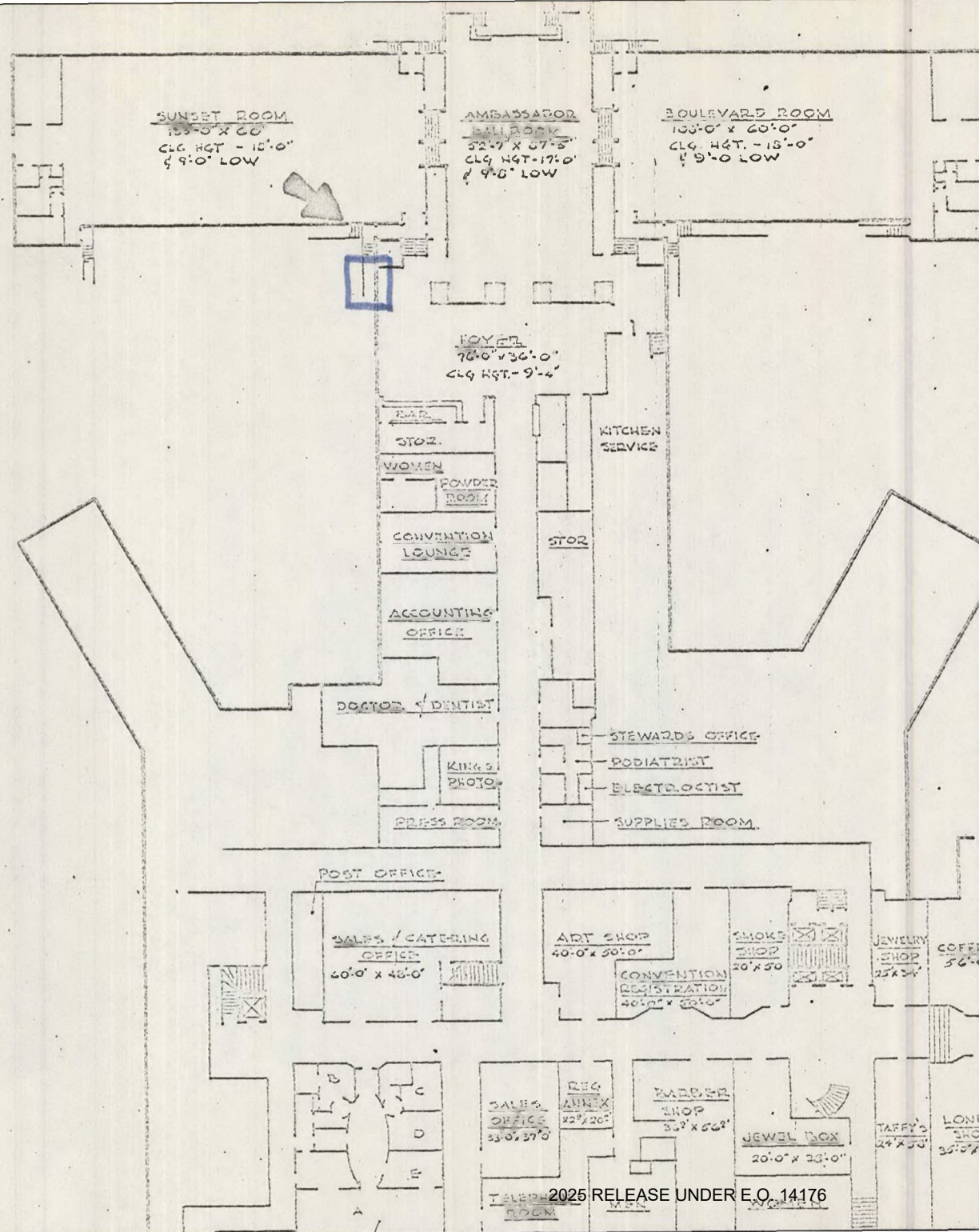
CASINO FLOOR



2025 RELEASE UNDER E.O. 14176

-60-

Photo A-7



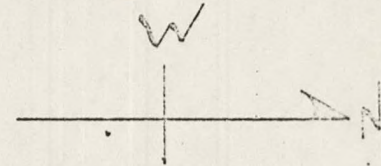
AMBASSADOR HOTEL
Los Angeles, California
CASINO FLOOR



-62-

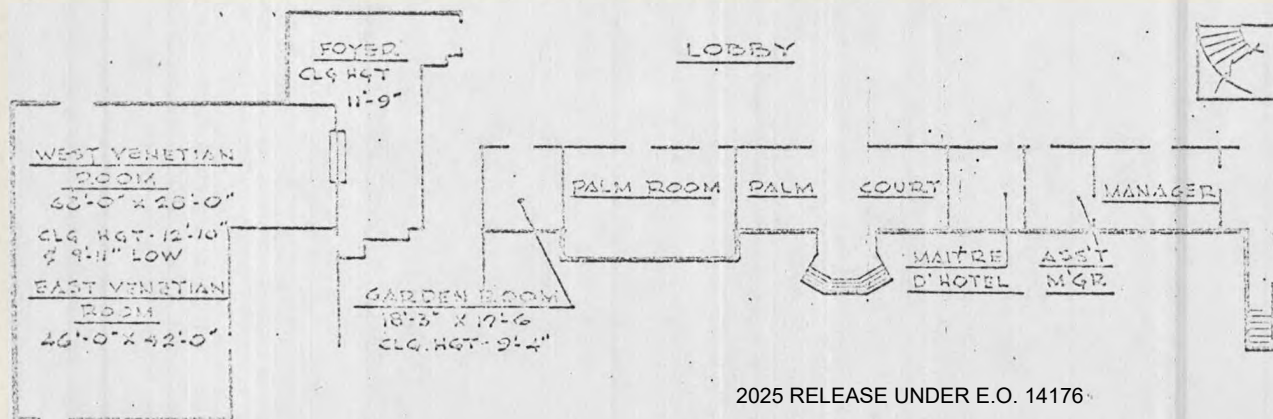
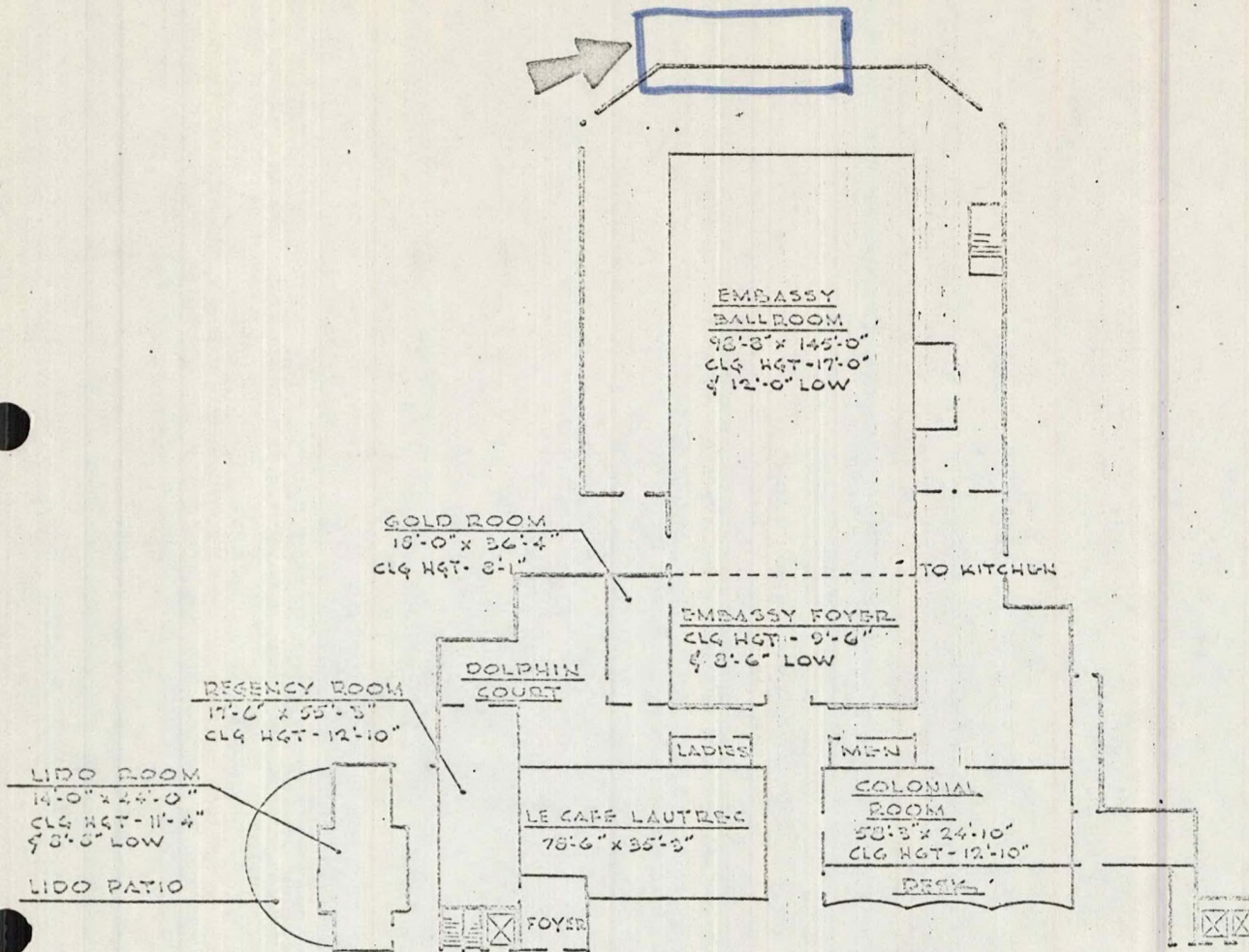
A7

Photo A-8



AMBASSADOR HOTEL
Los Angeles California

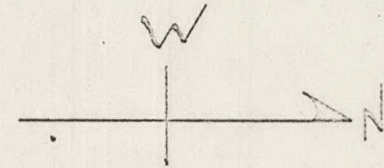
LOBBY FLOOR





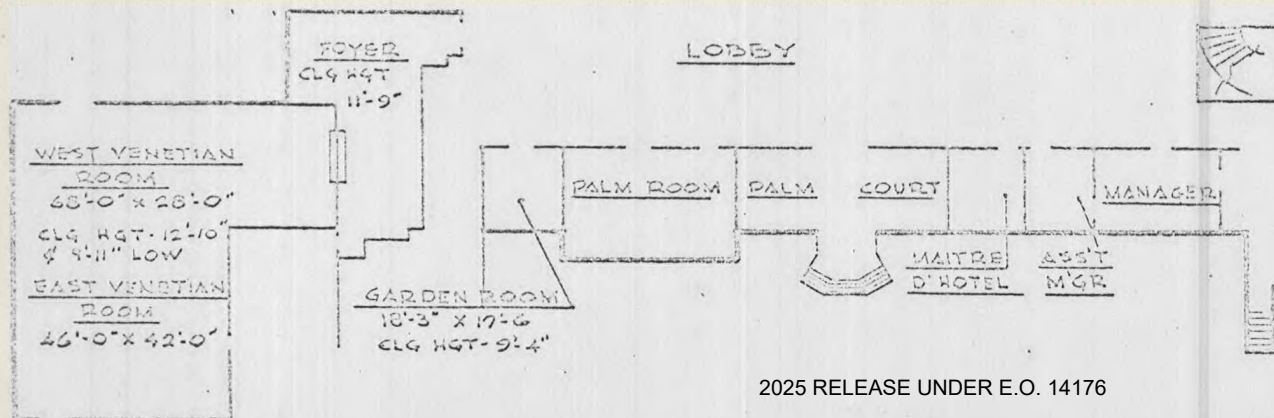
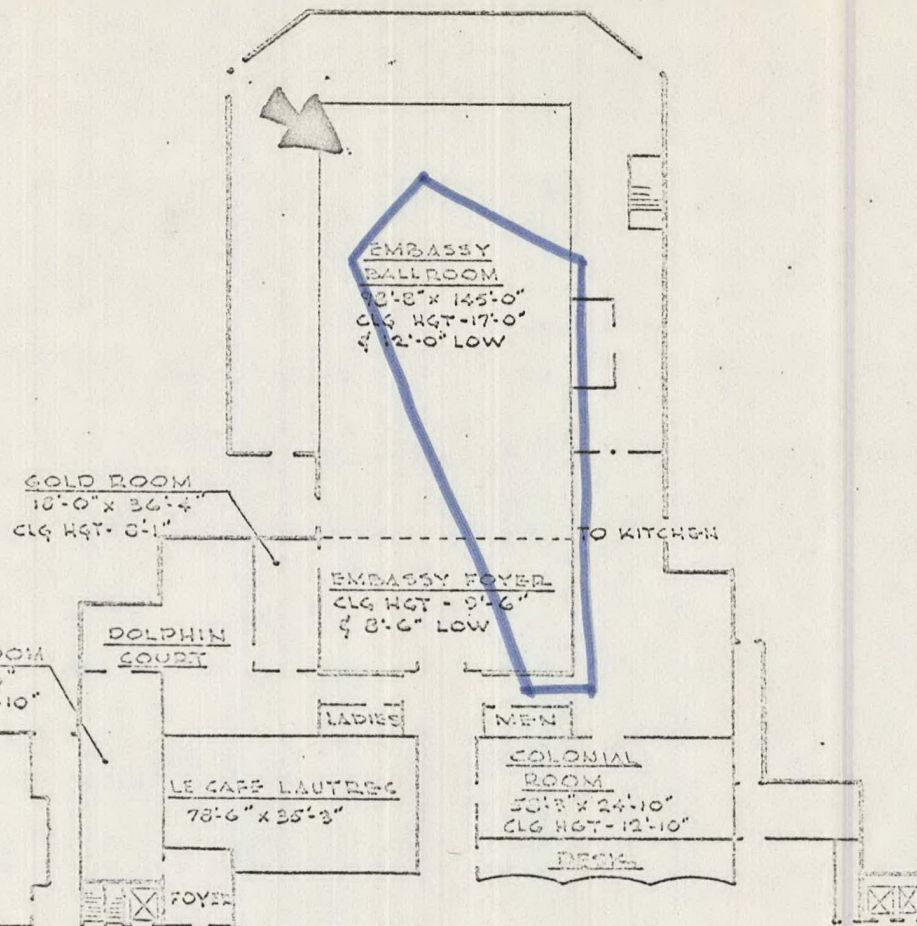
2025 RELEASE UNDER E.O. 14176

Photo B-1



AMBASSADOR HOTEL
Los Angeles California

LOBBY FLOOR

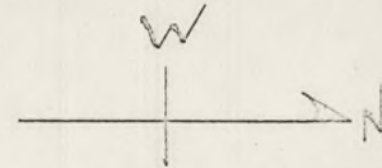




2025 RELEASE UNDER E.O. 14176

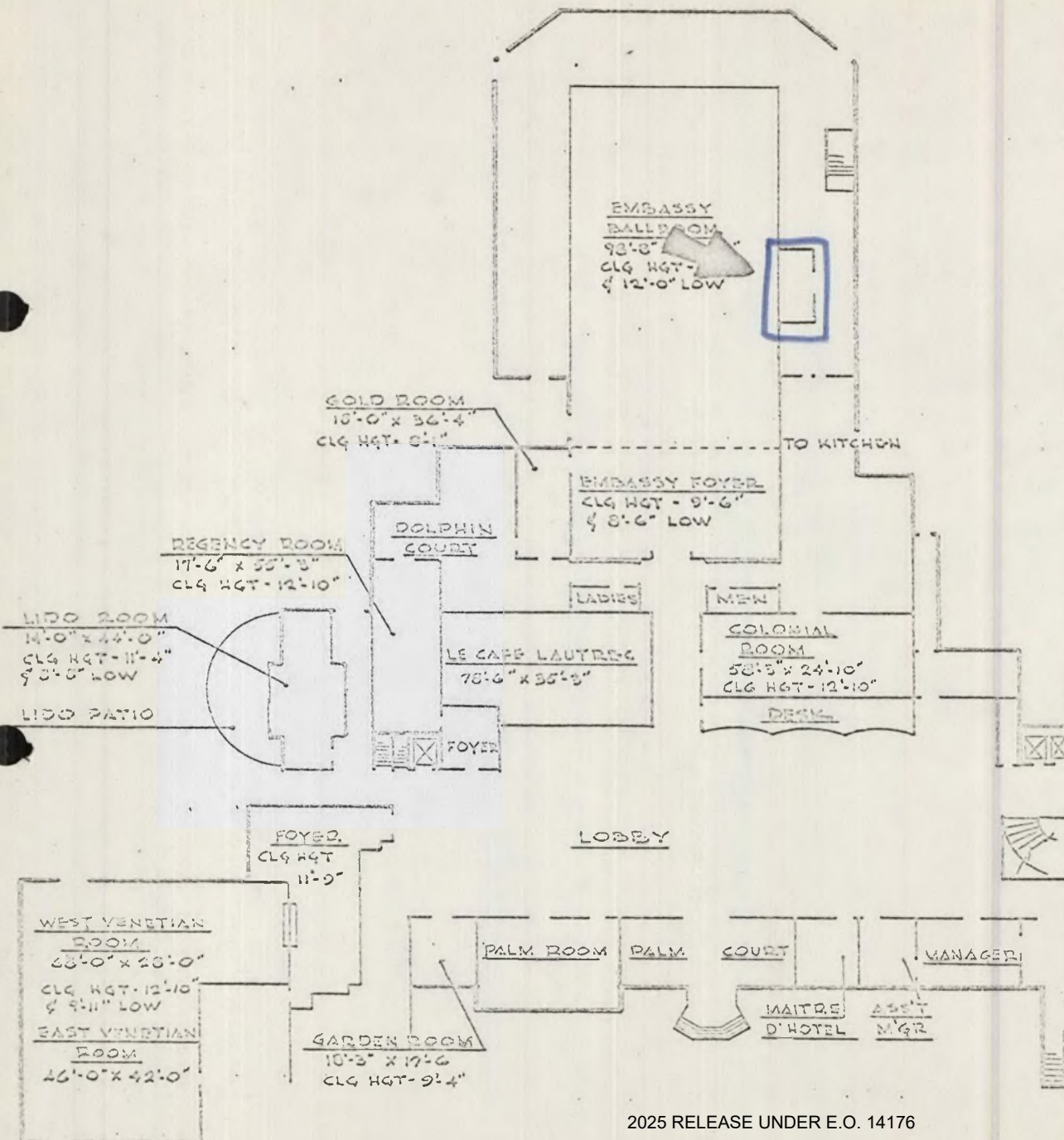
B1

Photo B-2



AMBASSADOR HOTEL
Los Angeles California

LOBBY FLOOR

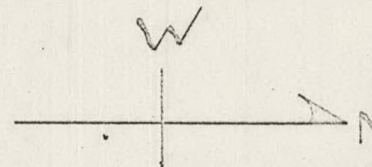




-68-

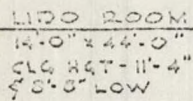
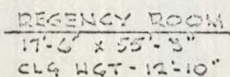
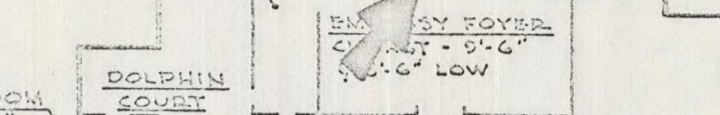
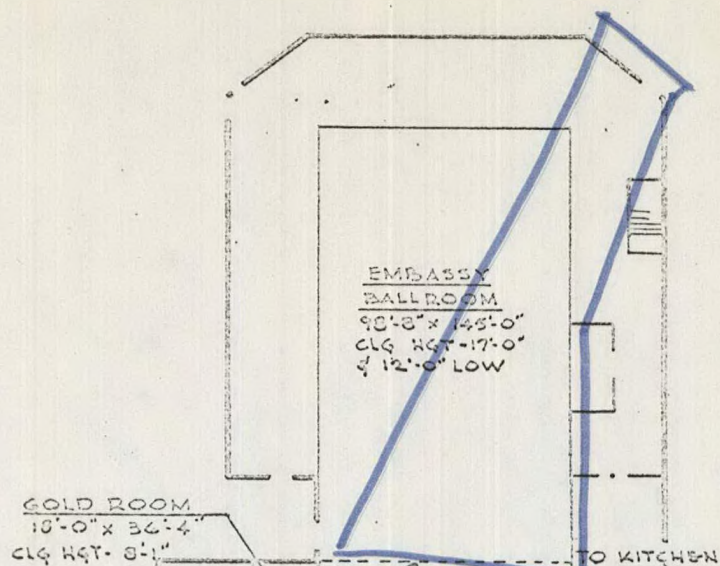
B2

Photo B-3

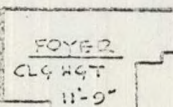
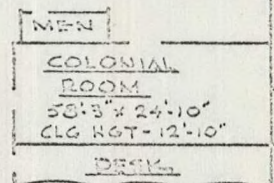
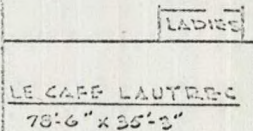


AMBASSADOR HOTEL
Los Angeles California

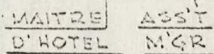
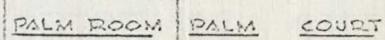
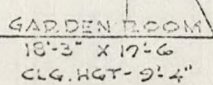
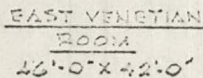
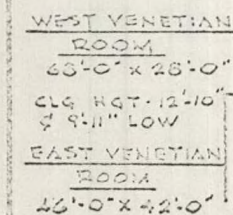
LOBBY FLOOR



LIDO PATIO



LOBBY

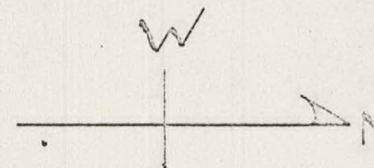


MANAGER



B3

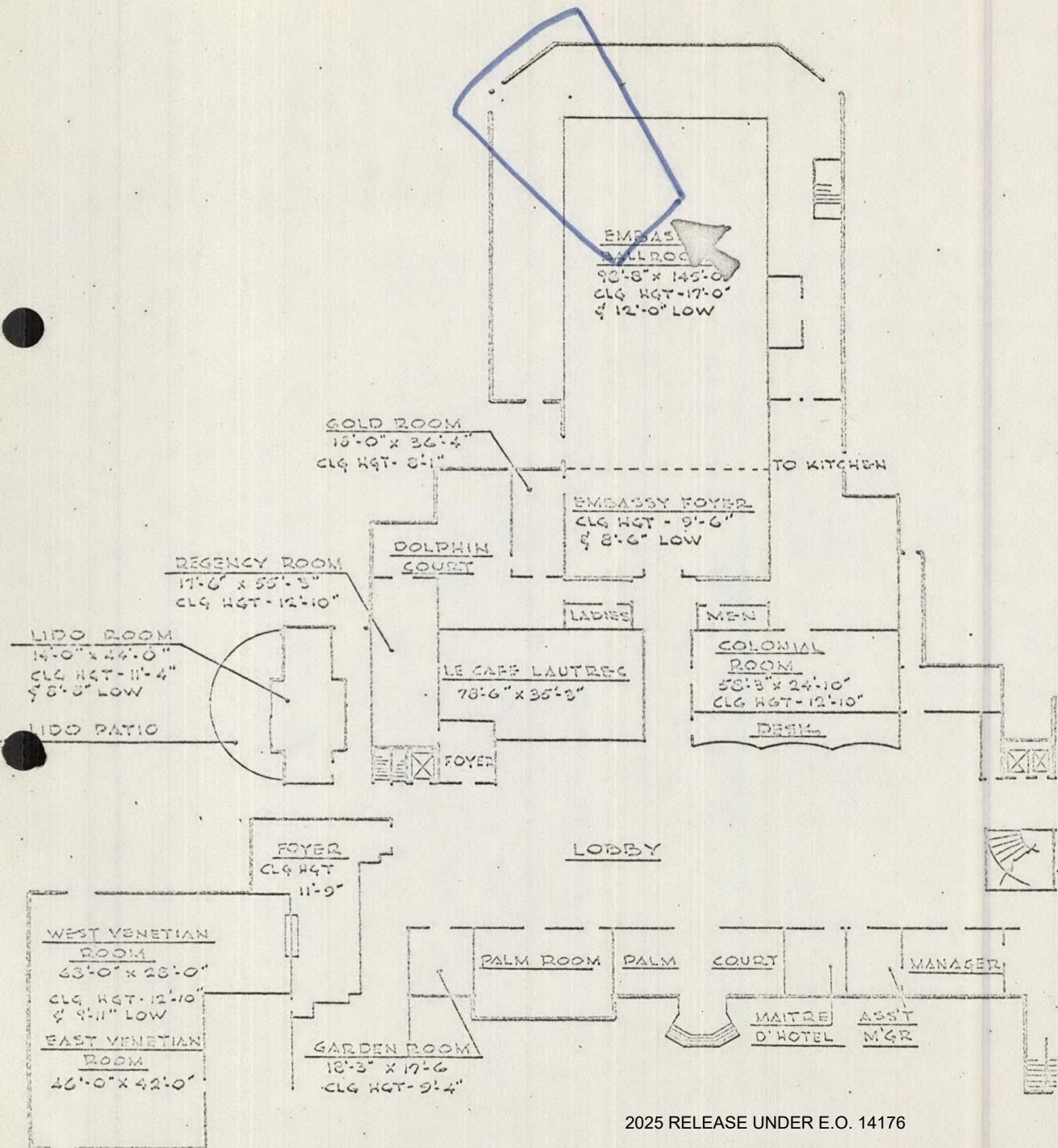
Photo B-4



AMBASSADOR HOTEL
Los Angeles California

LOBBY FLOOR

71

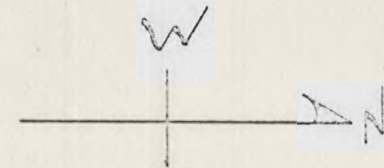




-72-

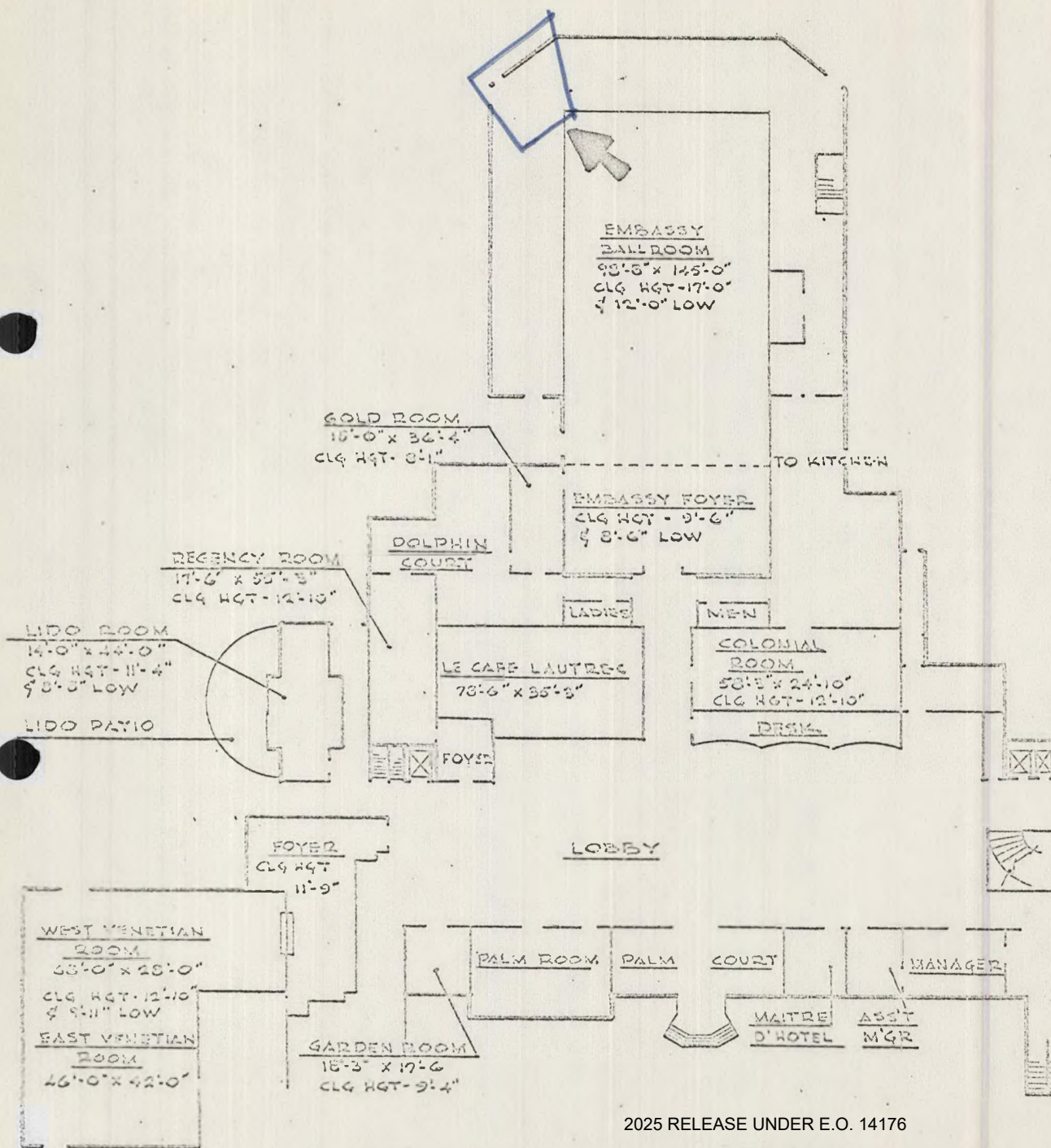
B4

Photo B-5



AMBASSADOR HOTEL
Los Angeles California

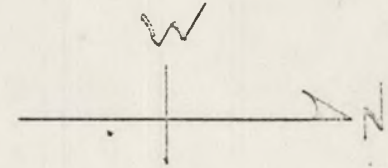
LOBBY FLOOR





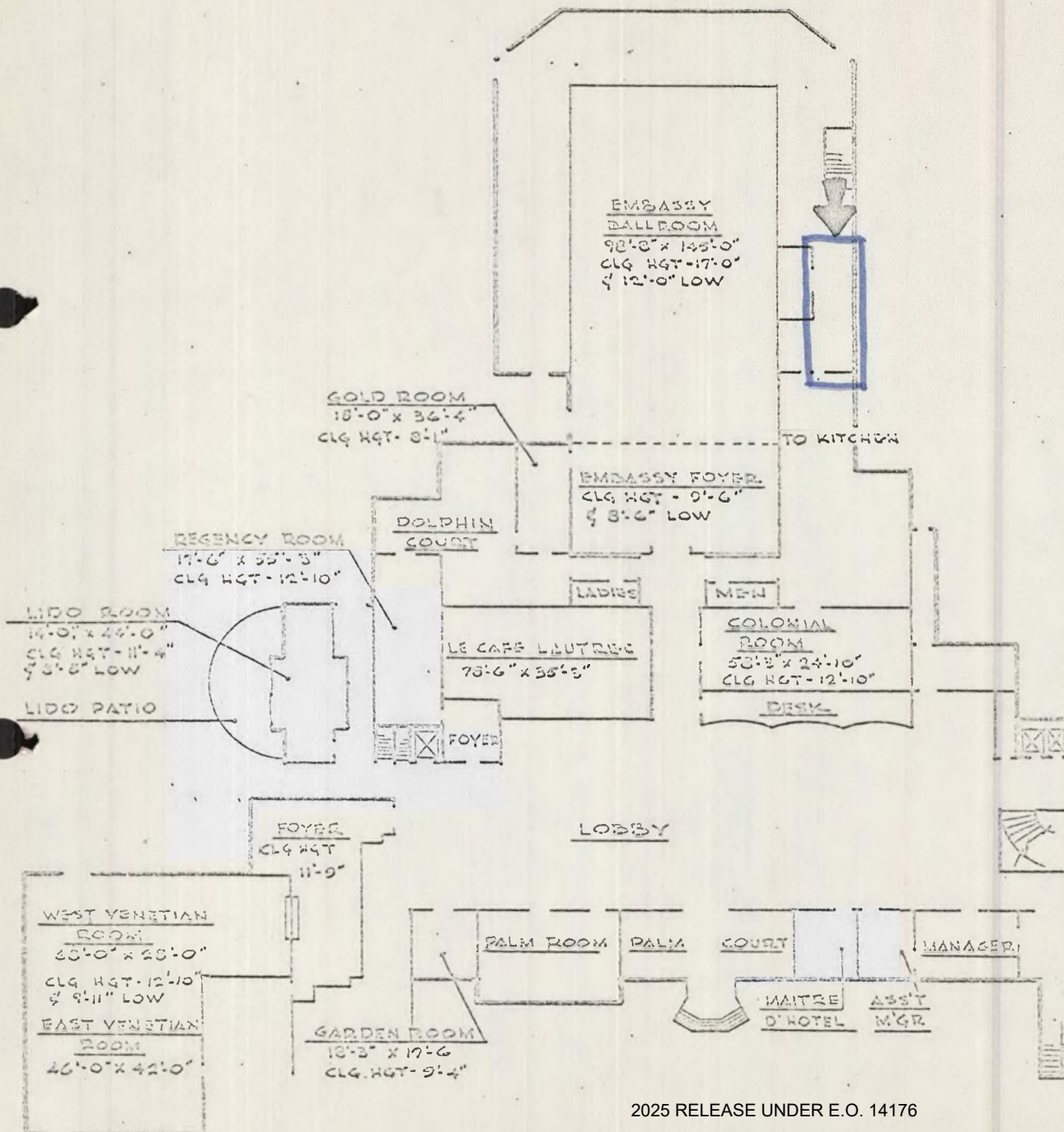
B5

Photo C-1



AMBASSADOR HOTEL
Los Angeles California

LOBBY FLOOR

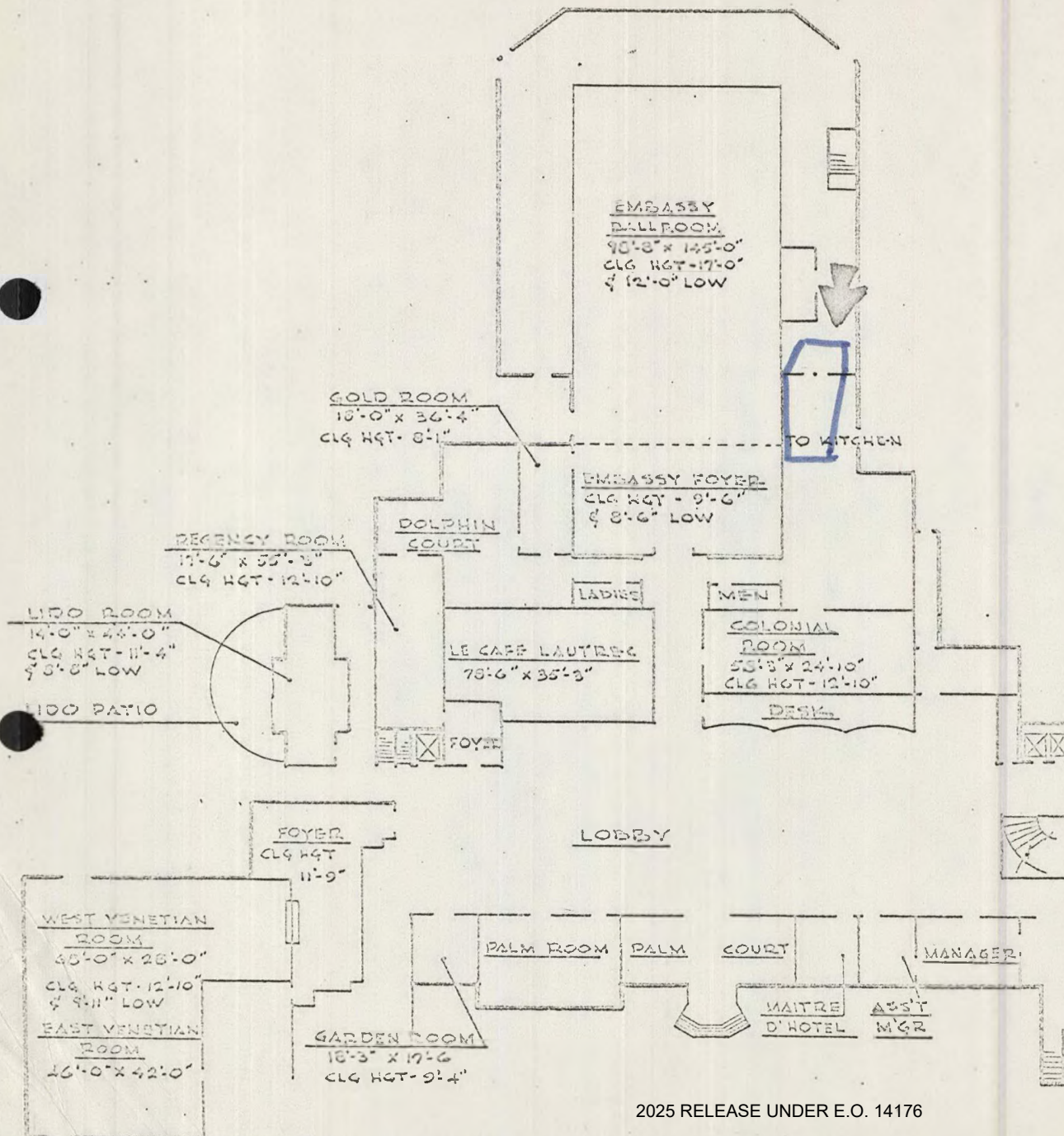




-176-

C 1

LOBBY FLOOR

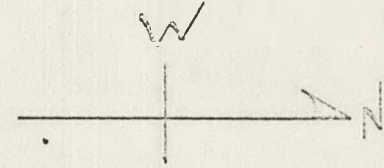




-78-

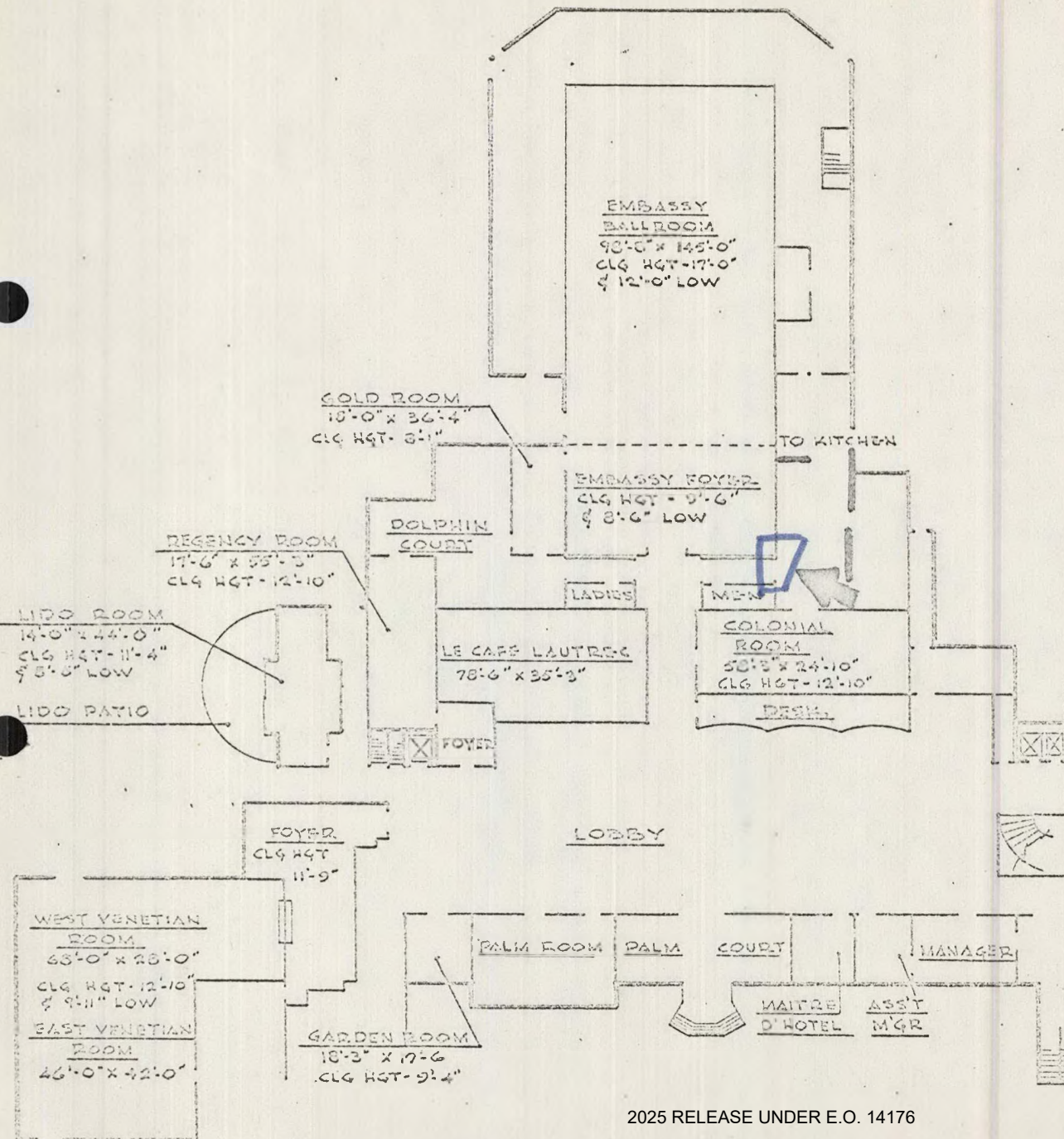
C2

Photo D-1



AMBASSADOR HOTEL
Los Angeles California

LOBBY FLOOR

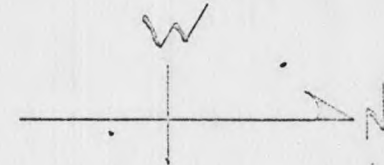


-79-



2025 RELEASE UNDER E.O. 14176

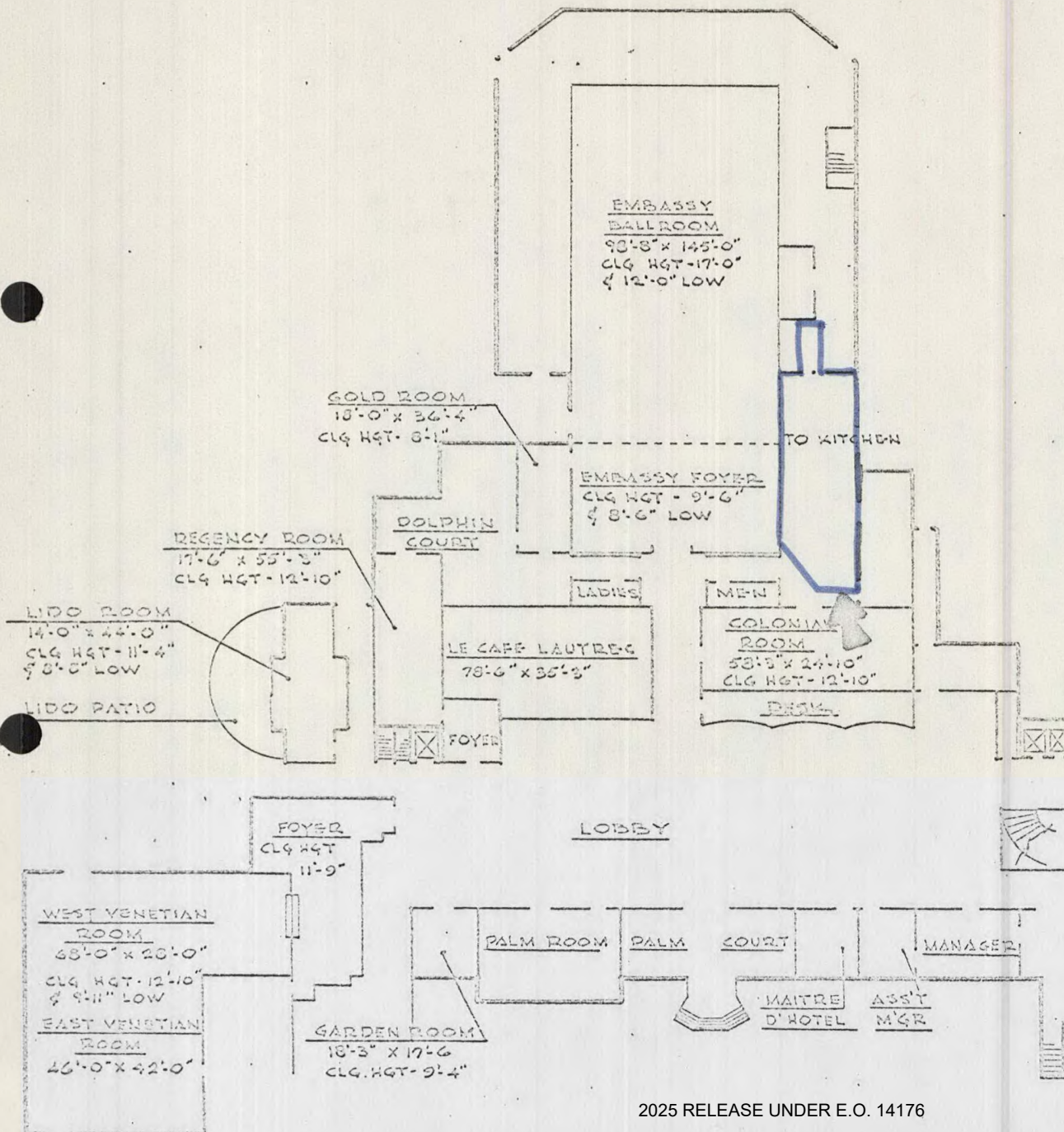
Photo D-2



AMBASSADOR HOTEL
Los Angeles California

LOBBY FLOOR

81

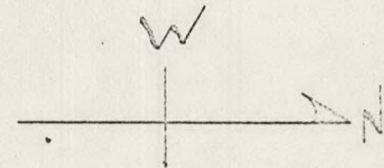




-es-

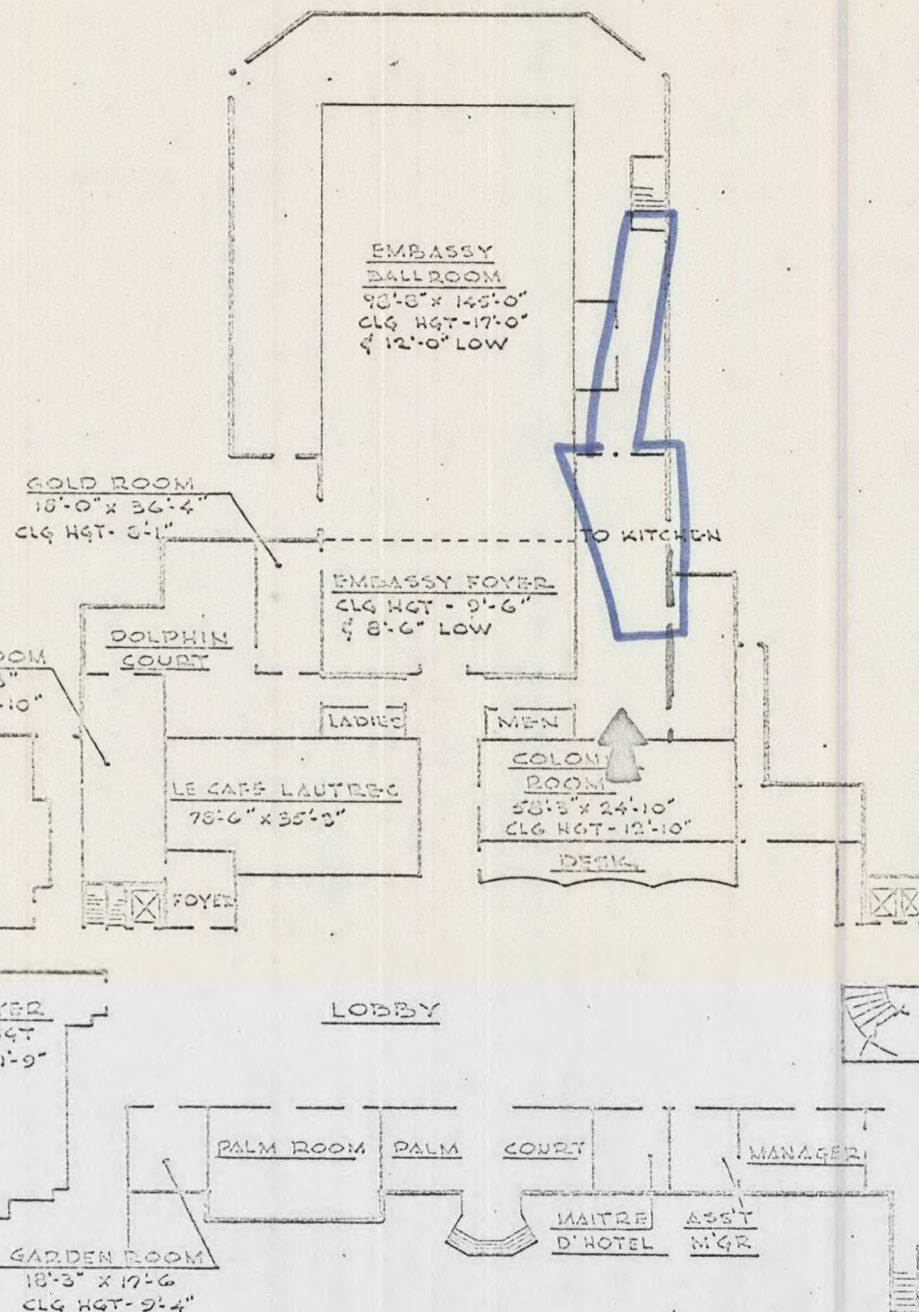
D 2

Photo D-3



AMBASSADOR HOTEL
Los Angeles California

LOBBY FLOOR

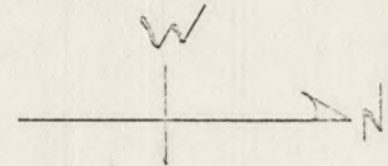




1-158-1

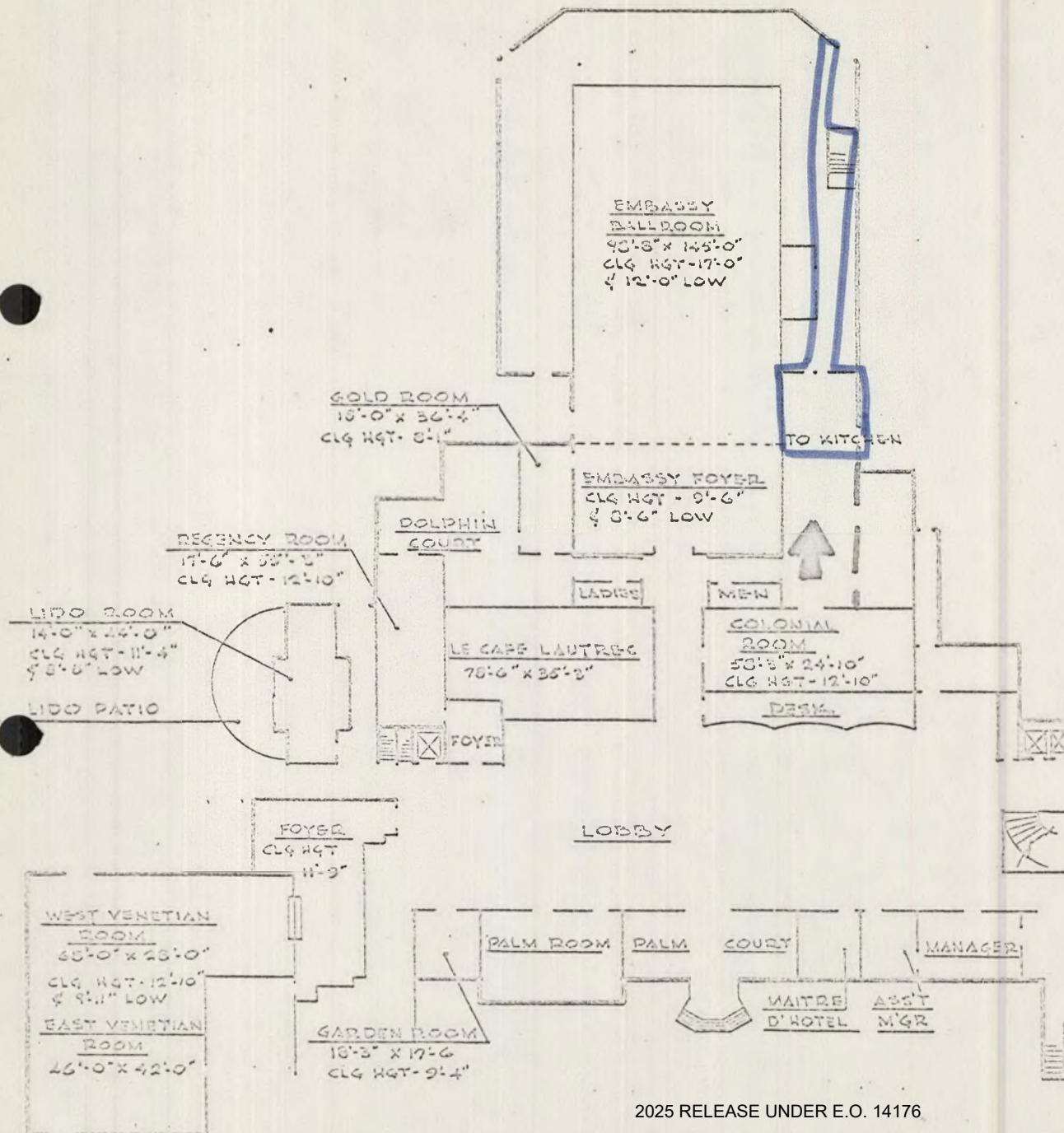
D 3

Photo D-4



AMBASSADOR HOTEL
Los Angeles California

LOBBY FLOOR





-86-

D4