



2025 RELEASE UNDER E.O. 14176



2025 RELEASE UNDER E.O. 14176





2025 RELEASE UNDER E.O. 14176



2025 RELEASE UNDER E.O. 14176



2025 RELEASE UNDER E.O. 14176

1401

CENTRAL RECEIVING





# 01 CENTRAL RECEIVING HOSPITAL



1401

CENTRAL





1401

CENTRAL RECEIVING HOSP



2025 RELEASE UNDER E.O. 14176



2025 RELEASE UNDER E.O. 14176



2025 RELEASE UNDER E.O. 14176



2025 RELEASE UNDER E.O. 14176





2025 RELEASE UNDER E.O. 14176



2025 RELEASE UNDER E.O. 14176

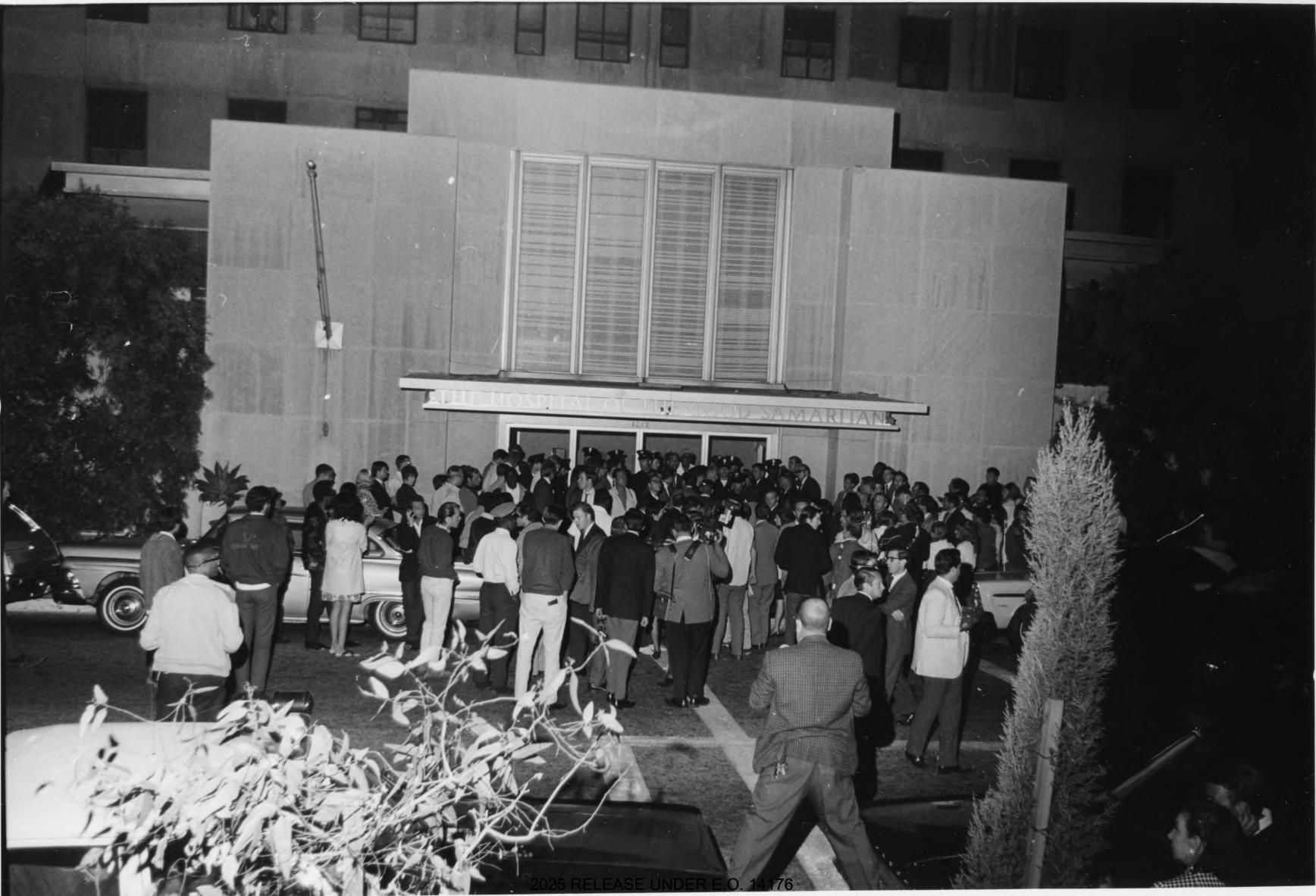




2025 RELEASE UNDER E.O. 14176



2025 RELEASE UNDER E.O. 14176





2025 RELEASE UNDER E.O. 14176





2025 RELEASE UNDER E.O. 14176

THE HOSPITAL OF THE GOOD SAMARITIAN

1212







2025 RELEASE UNDER E.O. 14176



2025 RELEASE UNDER E.O. 14176



2025 RELEASE UNDER E.O. 14176



2025 RELEASE UNDER E.O. 14176



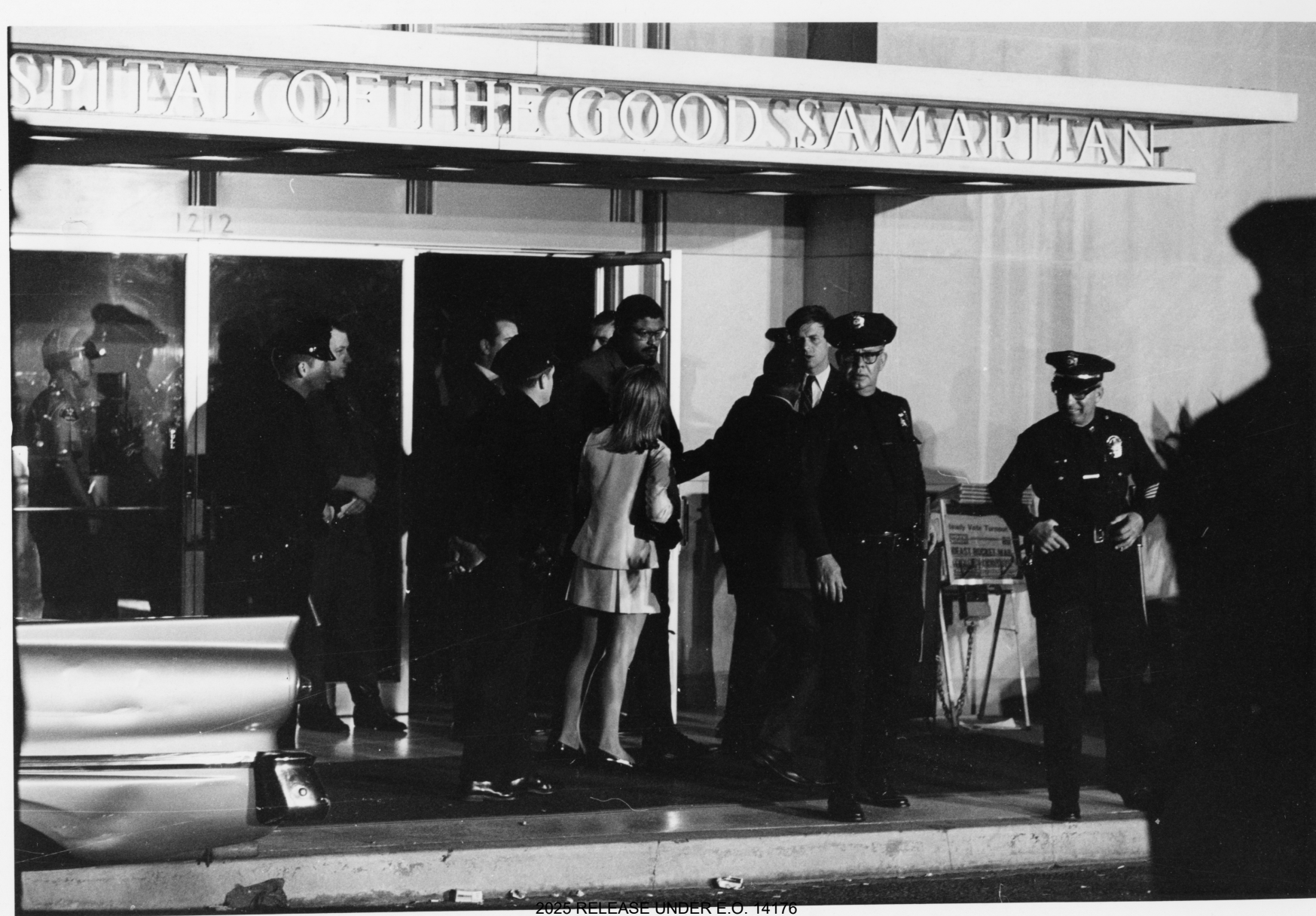


2025 RELEASE UNDER E.O. 14176



2025 RELEASE UNDER E.O. 14176

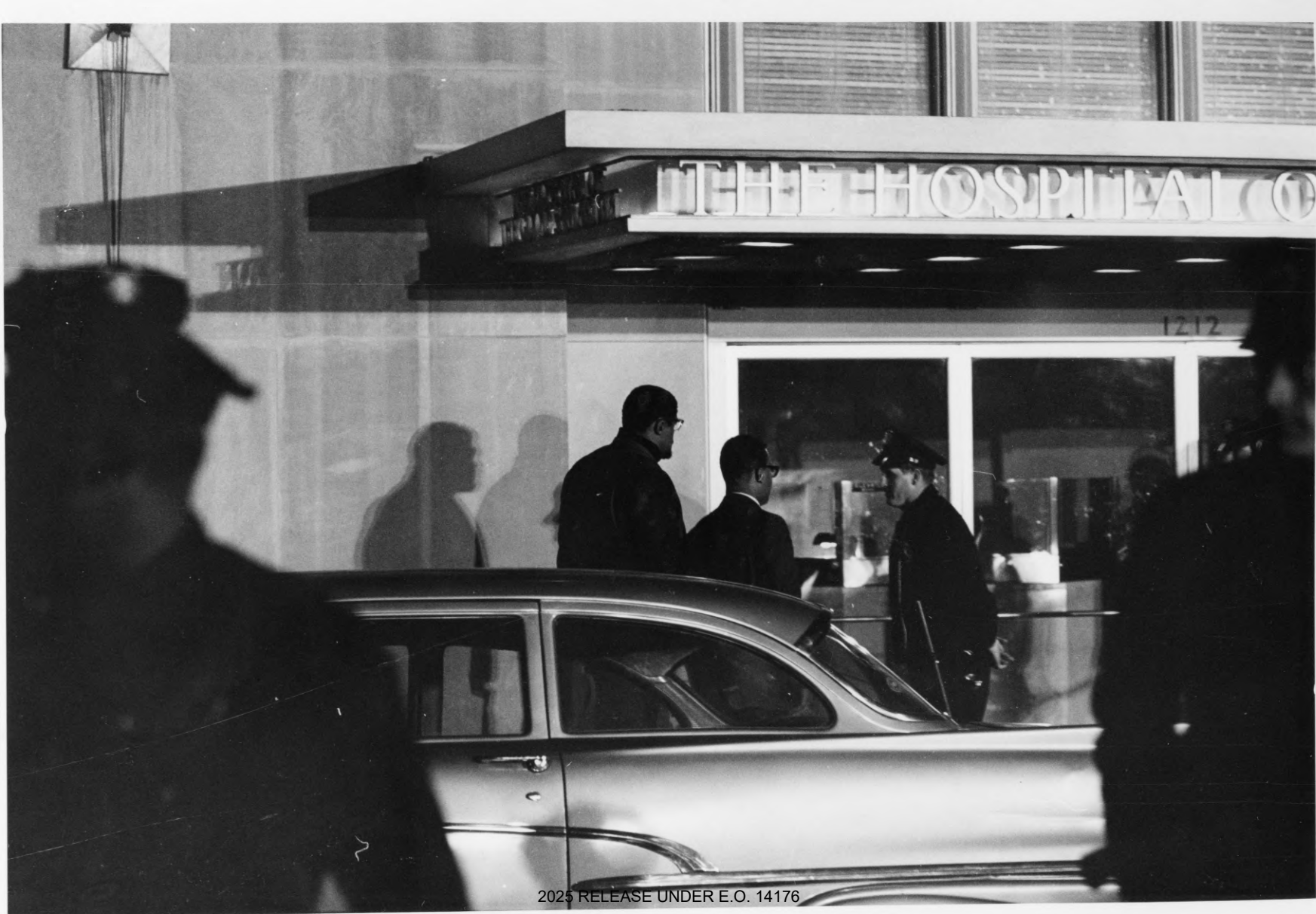




2025 RELEASE UNDER E.O. 14176



2025 RELEASE UNDER E.O. 14176



2025 RELEASE UNDER E.O. 14176



2025 RELEASE UNDER E.O. 14176



# HOSPITAL OF THE GOOD SAMARITIAN

1212





2025 RELEASE UNDER E.O. 14176



2025 RELEASE UNDER E.O. 14176



2025 RELEASE UNDER E.O. 14176





2025 RELEASE UNDER E.O. 14176



2025 RELEASE UNDER E.O. 14176



2025 RELEASE UNDER E.O. 14176



2025 RELEASE UNDER E.O. 14176





2025 RELEASE UNDER E.O. 14176



2025 RELEASE UNDER E.O. 14176



2025 RELEASE UNDER E.O. 14176

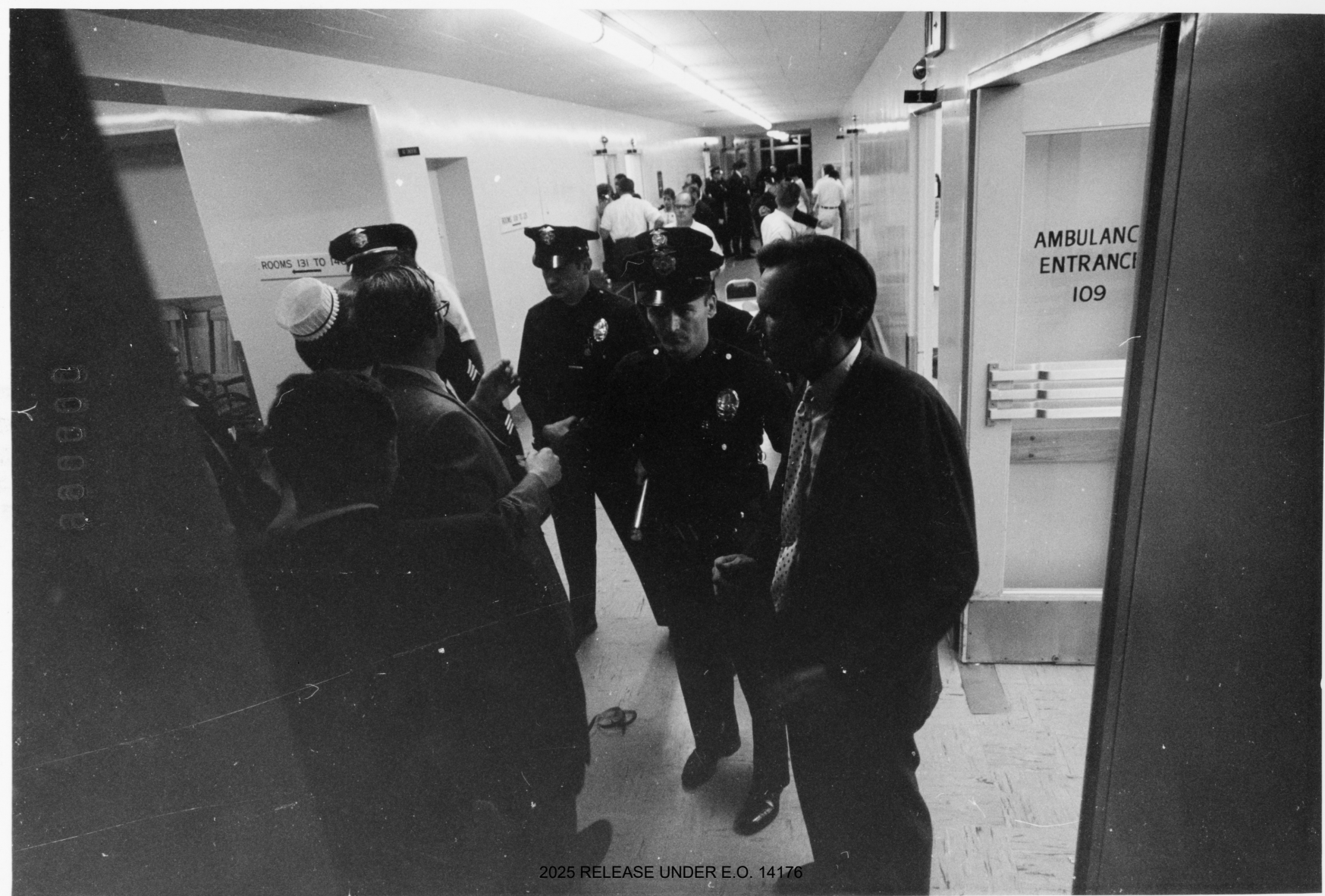


2025 RELEASE UNDER E.O. 14176

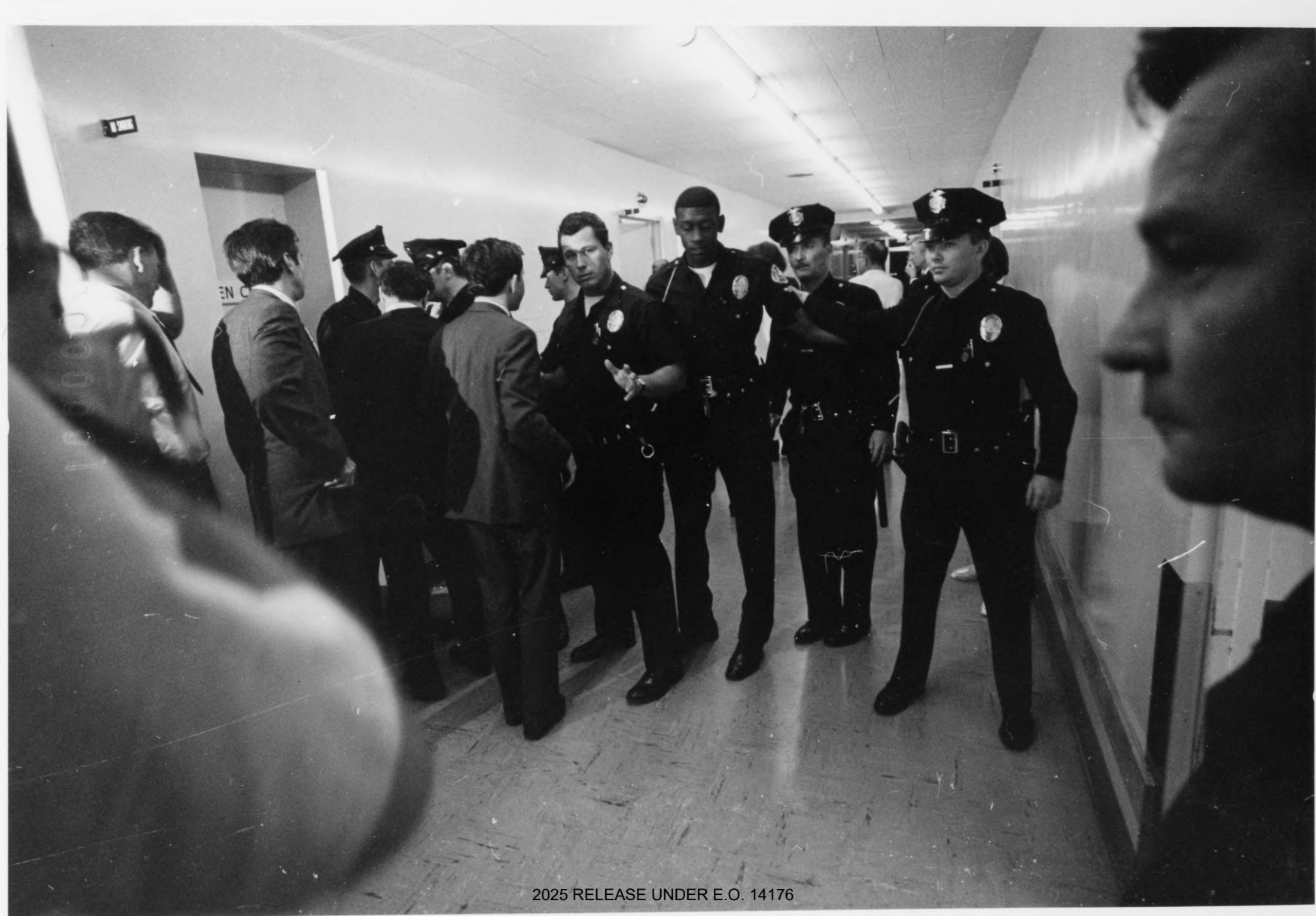




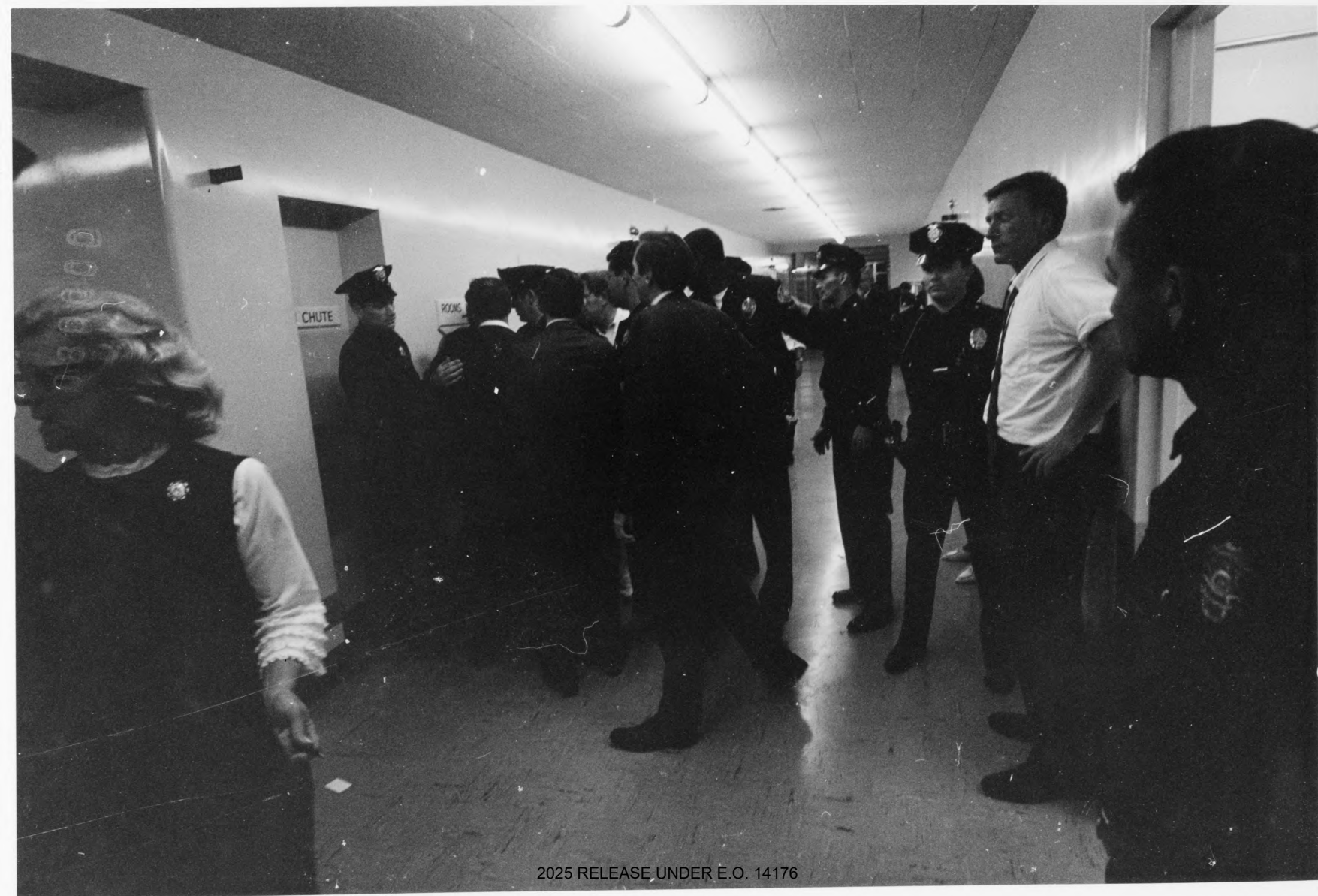
2025 RELEASE UNDER E.O. 14176



2025 RELEASE UNDER E.O. 14176



2025 RELEASE UNDER E.O. 14176



2025 RELEASE UNDER E.O. 14176






2025 RELEASE UNDER E.O. 14176



2025 RELEASE UNDER E.O. 14176



2025 RELEASE UNDER E.O. 14176

A black and white photograph of a crowded hallway. The hallway is long and narrow, with a drop ceiling and fluorescent lighting. On the left wall, there is a sign that reads "ROOMS 131 TO 146" with an arrow pointing left. Several police officers in dark uniforms and caps are visible, some standing and some in motion. A large crowd of people, mostly men in suits, is gathered in the hallway. The scene appears to be a formal event or a security check. The image has a grainy, historical quality.

ROOMS 131 TO 146