

~~SECRET~~

WORKING PAPER

CENTER LANE INTERVIEW SUMMARY

(FOR INHOUSE USE ONLY)

SUBJECT: CL-⁹⁵⁷~~936~~/8204/01

1. ^(S/N/FORM) On 020900Nov 82, Source #01 was interviewed by #66 in an attempt to obtain information relevant to a building in a photograph identified as Annex. The project 8204 sponsor had provided a photograph of the building in question as well as a map showing its relative location. This photograph and map (see INCL 1) were used as cuing in an attempt to allow Source #01 to focus his attention on the designated area. Previous attempts had been made to obtain information about this building. (see report #925 & #926) These attempts were unsuccessful due to faulty cuing data. These attempts were also confusing to Source #01 because he had sensed that something was wrong with the cuing (unpublished comments by #01 on 15 Jun 82) He had also addressed the sponsors question in session #916 without being asked. This could have been "overlay", but still was a point of confusion for Source #01. For this reason #01 was shown both the photograph and the map. This provided him with clear cuing devoid the old doubts and confusions about the project.
2. A transcript of the interview was prepared along with a narrative explanation of the drawings which #01 provided. (see INCL 2)
3. A DA Form 341 (Agent Report) was prepared for the sponsor. This report related the salient points of the interview. Attached as an exhibit to the report was a copy of #01's drawings and an explanation of the drawings. (see INCL 3).

3 Incl
as

Fredrick H. Atwater
 FREDERICK H. ATWATER
 CPT, MI
 TNG/OPS Officer

~~SECRET~~

WORKING PAPER

This document is made available through the declassification efforts
and research of John Greenewald, Jr., creator of:

The Black Vault



The Black Vault is the largest online Freedom of Information Act (FOIA) document clearinghouse in the world. The research efforts here are responsible for the declassification of hundreds of thousands of pages released by the U.S. Government & Military.

Discover the Truth at: <http://www.theblackvault.com>

SG1B

Approved For Release 2000/08/07 : CIA-RDP96-00788R000700320008-3

Next 1 Page(s) In Document Exempt

Approved For Release 2000/08/07 : CIA-RDP96-00788R000700320008-3

Cummings: See attached photo and map shown to source prior to interview.

TRANSCRIPT

- I: **66** This will be a interview with CENTER LANE source 01 for Project 8204 at 0900 hours 2 Nov 1982. The building in the photograph I have shown you is perceptible in present time.
- S: **01** Thick wide steps on the east side. They go up, double glass doors, small entry, small desk on the right, guard. Entry floor is the second floor, it's like a basement under that. There's laundry facilities in the basement, north end, furnace, furnace area, approximately dead center in the building basement. Individual storage, cubicle areas, south end. Gate fences or some kind of chain link fencing. Entry floor, long corridor down the center. See office areas, northeast corner of building. Small offices, southeast corner, small offices. See a room with printing equipment, copying machines, southwest corner, for the printing area. See stairs in the center of the west side of the building, about three more floors to the landing, landing on the fourth floor, attic area. Second floor, third floor, I see apartments. I'm getting like one room, two room efficiencies. It's getting like smaller rooms with furniture, residence type rooms.
- I: Area or individual of highest interest to intelligence services is perceptible.
- S: Second floor on the northwest end of building, sorry it's southwest end of building. Second floor a little in from center, towards center. Get a large residence area. Appears to be bedroom, bath, livingroom, kitchen.

- I: Activity of interest to intelligence services is perceptible.
- S: Just a minute. It's an individual that lives there, he's got sandy color hair with gray, late 40's, about 5'10" -5'11".
Wears gray suits a lot. He's of interest, particularly conversations and other people he meets. He's the vice something. That's just the title he has, it's not his job. He's some kind of a controller. Something to do with paying money. Seen interest in dialing a phone. I get a strong suspicion for some kind of monitoring device in this area and I'm trying to isolate it.
- I: Method of satisfying interest of intelligence services.
- S: I'll monitor this guy, profile him, identify acquaintances, conversations, contacts, phone numbers, scheduling, attitudes, his personality.
I just deep getting an image of three wooden objects, vertical, up and down with a hooks on the top edge, mounted on some kind of piece of furniture. There's a power cord going to it, but I can't tell what kind of piece of furniture. This guy's watched all the time, followed everywhere. He has military contacts that he uses.
- I: Describe activity now, 0930 Eastern Standard Time, 2 November 82.
- S: See a light on, sitting in an easy chair, reading a paper, smoking a pipe, feet up on something and crossed. Briefcase on a side table, opened. Just single low light in the room. Writing something, just a minute. Writing paper on some kind of production estimate. It's really not an estimate on production, it's an estimate on "if" production, "if" or "not" production, something like that.
- I: At this time, I have no further questions concerning the building in the photograph I have shown you. However if I have neglected

S: Great interest in who this guy meets or talks to. But for some reasons, the people trying to discover that, have their own problems right now. That's all I'm getting.

I: All right fine . I would like you now to draw your perceptions of the building in the photograph I've shown you and explain your drawings to me.

DRAWING EXPLANATION

I: As I have requested, you've drawn some pictures of the building as you see it. Can you explain these pictures to you?

S: ~~Yes.~~ Page #1 is the basement area and on one end is the storage area. And then center, center south is the up and down staircase, and then a furnace area, and what I call a laundry area. And then I wrote in a printing or press area, cause they got copying machines and that sort of thing. But that may be on the first floor of the entry floor in place of one of the things I called an apartment, smaller apartment.

I: Seems to me that during the interview, you didn't mention the printing concept in the basement.

S: No, I'm not really sure where I saw it. So, you know it's on one of the other floors.

S: Page #2 is the first floor of the entry floor, which is some wide concrete steps and recessed entryway which is double glass doors, desk on the right with a guard. He's sort like a guy who checks to make sure people who live there come in. Big open foyer area with the up and down staircase in the center south side. I get smaller apartments with shared bathrooms on either end of the corridor, you know, there the kind of bathrooms that you've got to go out of your apartment to go down and use the bathroom. And these are just small apartments you know like single individual apartments.

S: Page #3 which is the targeted floor or what I feel is the targeted floor are four very large apartments with private baths, and one bedroom and then like a living area, a kitchenette type area.

S: And the targeted apartment being in the southwest corner,
where I label ~~that~~ in SW.

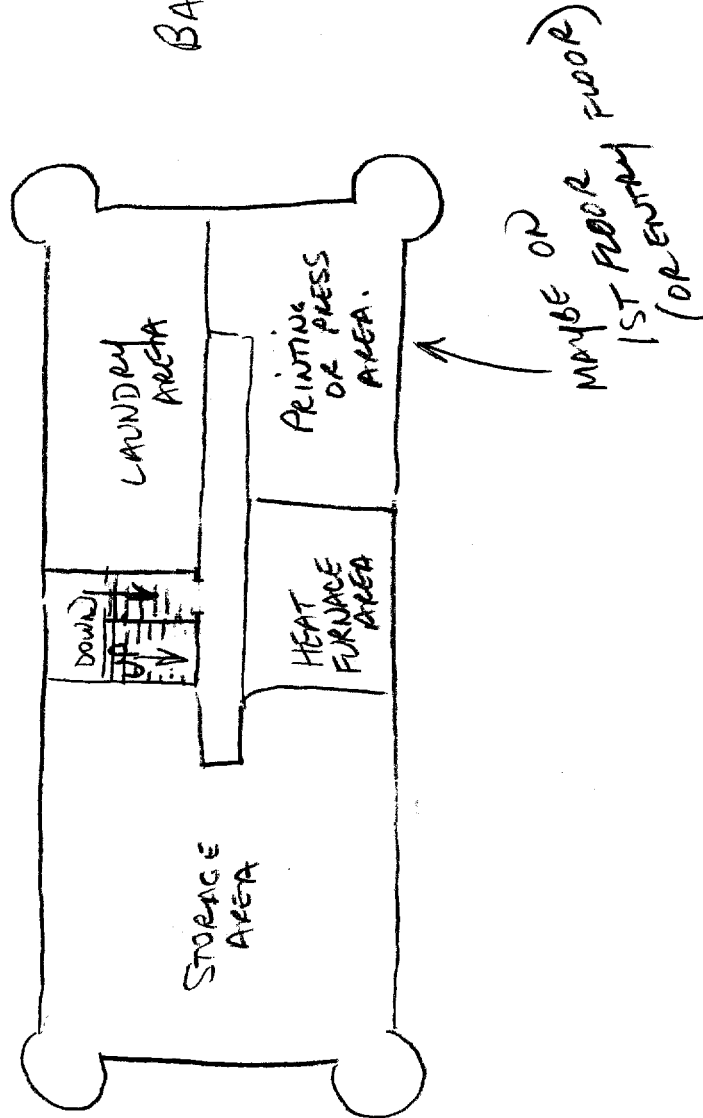
S: And then, Page #4 is a drawing of the piece of furniture, it's
like a section of a piece of furniture with three design vertical
pieces that go up the side with an electric cord running off the
flat top. I always had an impression that this was some kind
of listening element or device or something. And that's it.

I: Okay fine, thank you very much.

~~SECRET~~

①

BASEMENT

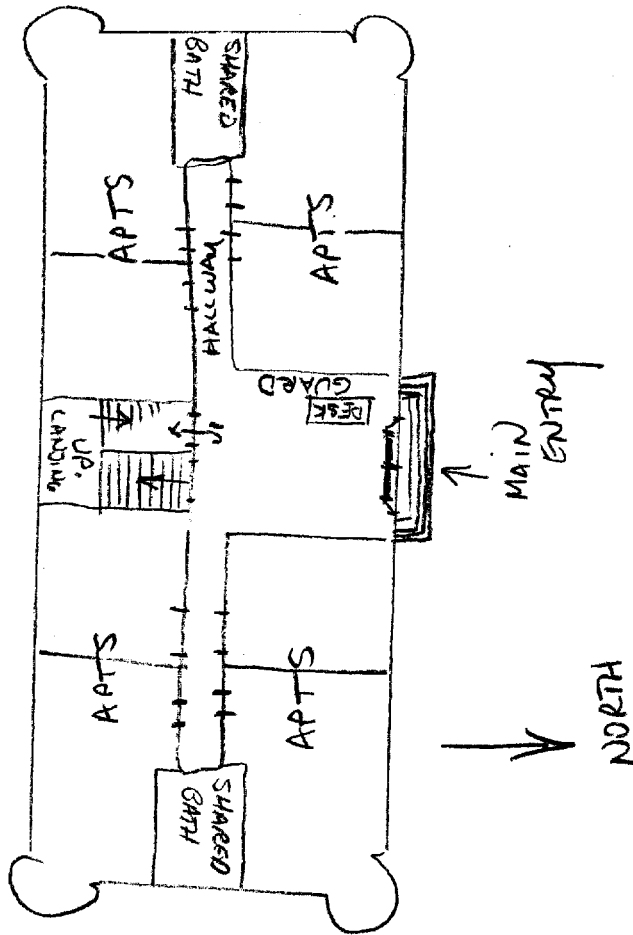


~~SECRET~~

~~SECRET~~

2

1ST FLOOR.
SMALLER
APTS

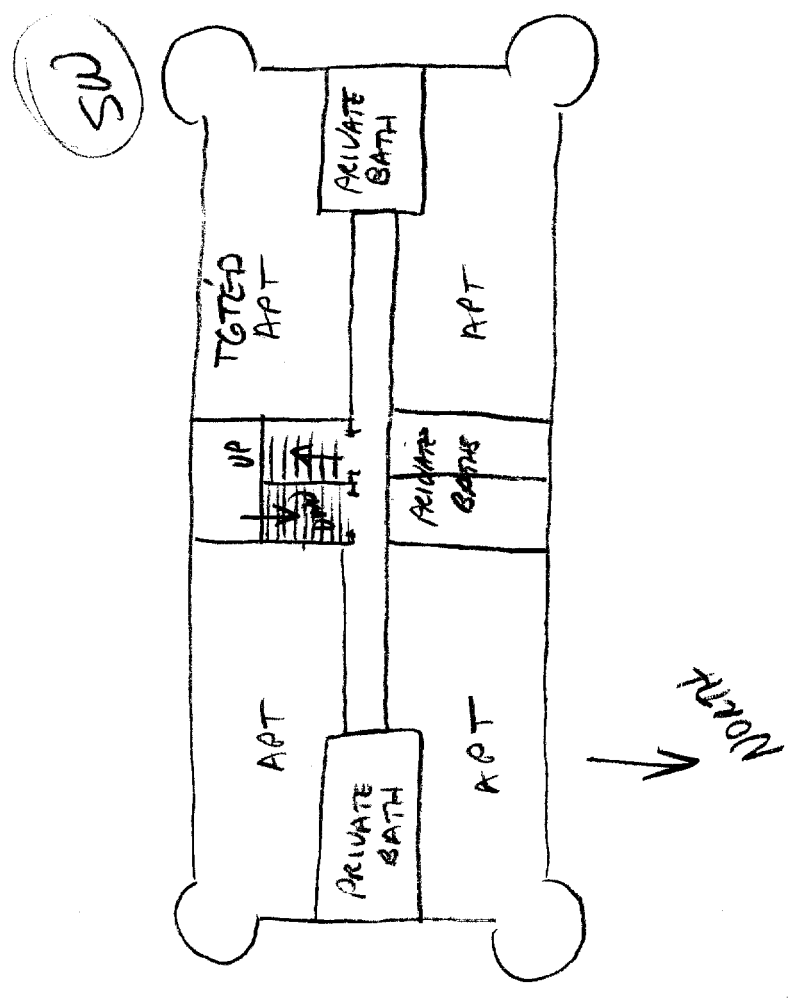


~~SECRET~~

~~SECRET~~

3

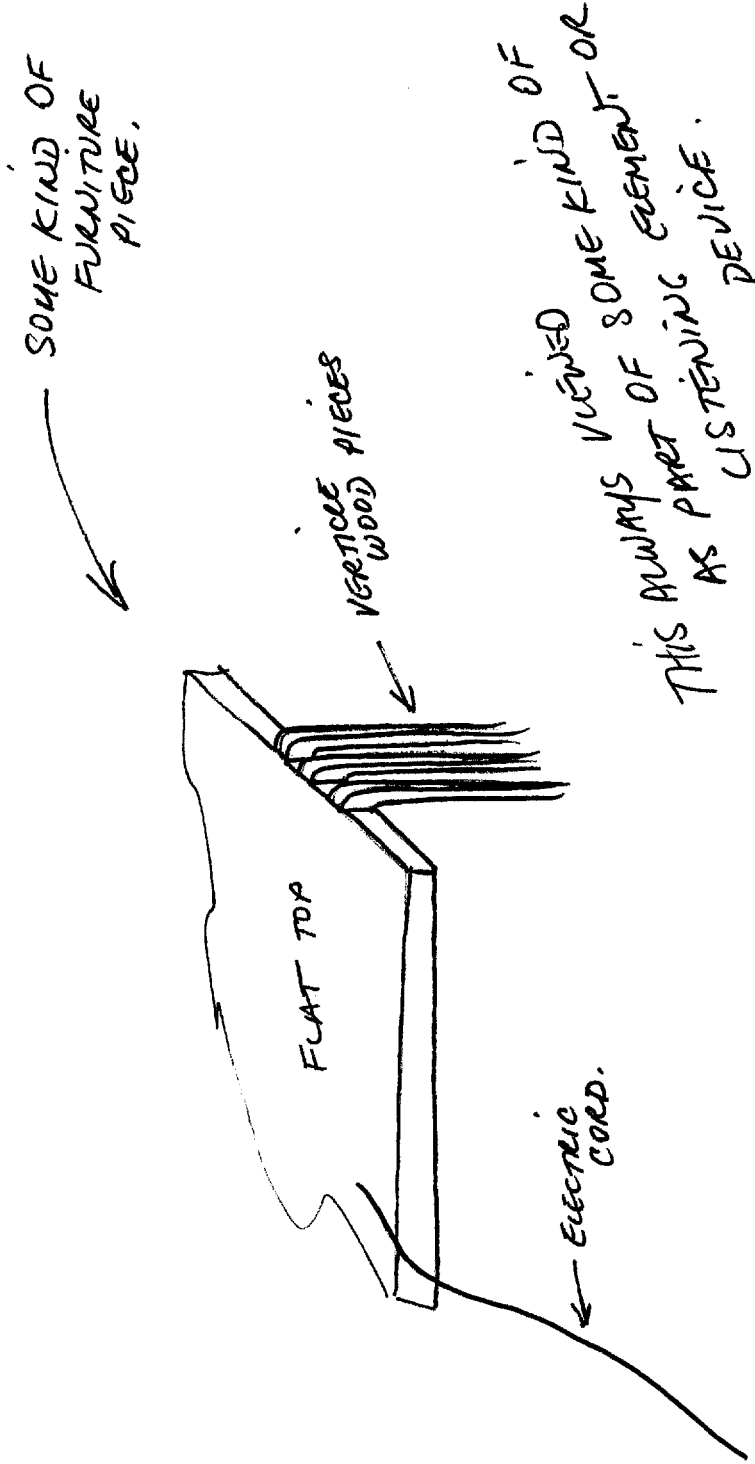
2ND FLOOR
LARGER APTS.



~~SECRET~~

~~SECRET~~

(4)



~~SECRET~~

~~SECRET~~

WORKING PAPER

Approved For Release 2000/08/07 : CIA-RDP96-00788R000700320008-3

AGENT REPORT

For use of this form, see FM 30-17(C); AR 381-130; the proponent agency is the Office of the Assistant Chief of Staff for Intelligence.

1. NAME OF SUBJECT OR TITLE OF INCIDENT

Annex Building

2. DATE SUBMITTED

5 November 1982

3. CONTROL SYMBOL OR FILE NUMBER

CL-957/8204/01

4. REPORT OF FINDINGS

On 2 November 1982, Source CL-01 was interviewed concerning the annex building. Source stated substantially as follows:

The building had wide steps on the east side. The steps went up to double glass doors. There was a small entry and inside was a small desk on the right side with a guard. The entry floor was the second floor and there was a basement under that.

In the basement there were laundry facilities on the north end. Located in the center of the basement was a furnace area. At the south end of the basement were individual storage, cubical areas.

On the entry floor were office areas. There may also have been a room with printing equipment, copying machines on this floor.

The other floors in the building were apartments. They were one or two room efficiencies. They were smaller rooms with furniture, residence type rooms.

On the second floor, on the southwest end of the building, a little in towards the center of the building was a large residence area. The individual who lived there was of interest to intelligence services. He had sandy color hair with gray. He was in his late 40's. He was 5'10" - 5'11" tall. He wore gray suits a lot. He had a job title of vice something (not further identified). He was some kind of controller (not further identified). He had something to do with paying money. Intelligence services were particularly interested in his conversations and other people he met. His activities were suspected of being monitored by a device on a piece of furniture. This individual was watched at all times, and followed everywhere. He had military contacts that he used.

Attached hereto is EXHIBIT 1, containing drawings and drawing explanation provided by Source reference his knowledge of the area described above.

No further amplifying information was obtained from source during this interview.

CLASSIFIED BY MULTIPLE Sources 5Nov82

DECLASSIFY ON Nov2002

~~SECRET~~

WORKING PAPER

5. TYPED NAME AND ORGANIZATION OF SPECIAL AGENT

6. SIGNATURE OF SPECIAL AGENT

DA FORM 341 1 APR 52

REPLACES WD AGO FORM 341, 1 JUN 47, WHICH MAY BE USED.

☆ GPO: 1970 390-907/248

Approved For Release 2000/08/07 : CIA-RDP96-00788R000700320008-3

CLASSIFIED INCLOSURES

INCL 3

~~SECRET~~

EXHIBIT COVER SHEET

EXHIBIT I

DRAWINGS AND DRAWING EXPLANATION

ANNEX BUILDING

CL-957/8204/01

~~SECRET~~

REGRADED UNCLASSIFIED
CLASSIFIED INCLOSURES

~~SECRET~~

DRAWING EXPLANATION

Page #1 is the basement area. On one end was the storage area. Then center, center south was the up and down staircase, then a furnace area, and a laundry area. There was a printing or press area, because they had copying machines and/or that type equipment. The printing area may have been the first floor or the entry floor in place of one of the areas called an apartment.

Page #2 is the first floor, the entry floor, which had some wide concrete steps and a recessed entryway which was double glass doors. On the right there was a desk with a guard, who appeared to be a guy who checked to make sure only people who lived there came in. There was a big open foyer area with an up and down staircase in the center south side. There were apartments with shared bathrooms on either end of the corridor; they were the kind of bathrooms that one has got to go out of one's apartment to go down and use the bathroom. And these were just small apartments like single individual apartments.

Page #3 depicts what Source felt was the targeted floor. There were four very large apartments with private baths, one bedroom and then like a living area and a kitchenette type area. Source labeled the targeted apartment as having been in the southwest corner (label SW).

Page #4 is Source's drawing of a piece of furniture. Source described it as "like a section of a piece of furniture with three design vertical pieces that go up the side with an electric cord running off the flat top." Source had an impression that this was some kind of listening device or something.

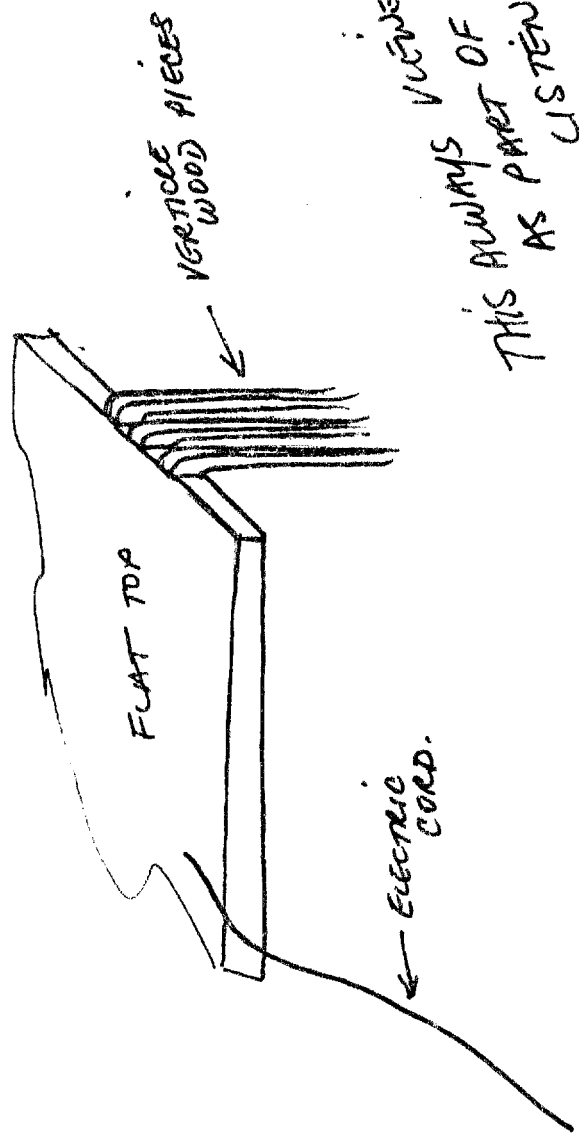
~~SECRET~~

~~SECRET~~

(4)

SOME KIND OF
FURNITURE
PIECE.

THIS ALWAYS VIEWED
AS PART OF SOME KIND OF
LISTENING
DEVICE.

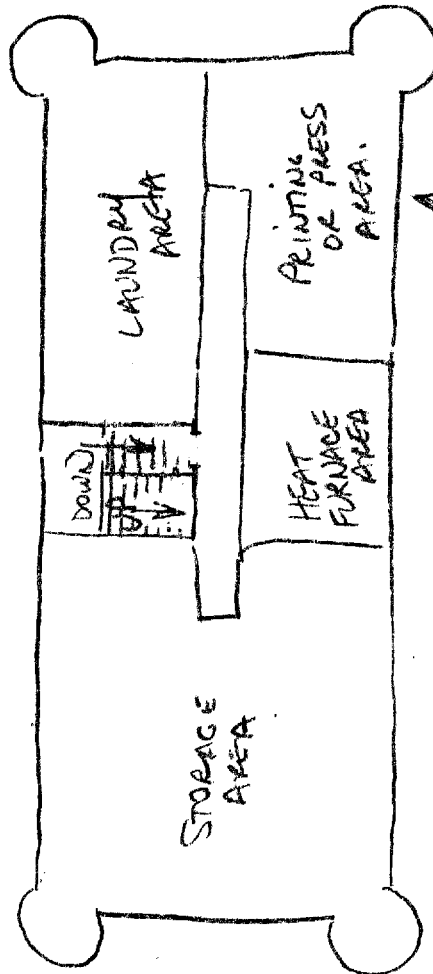


~~SECRET~~

~~SECRET~~

1

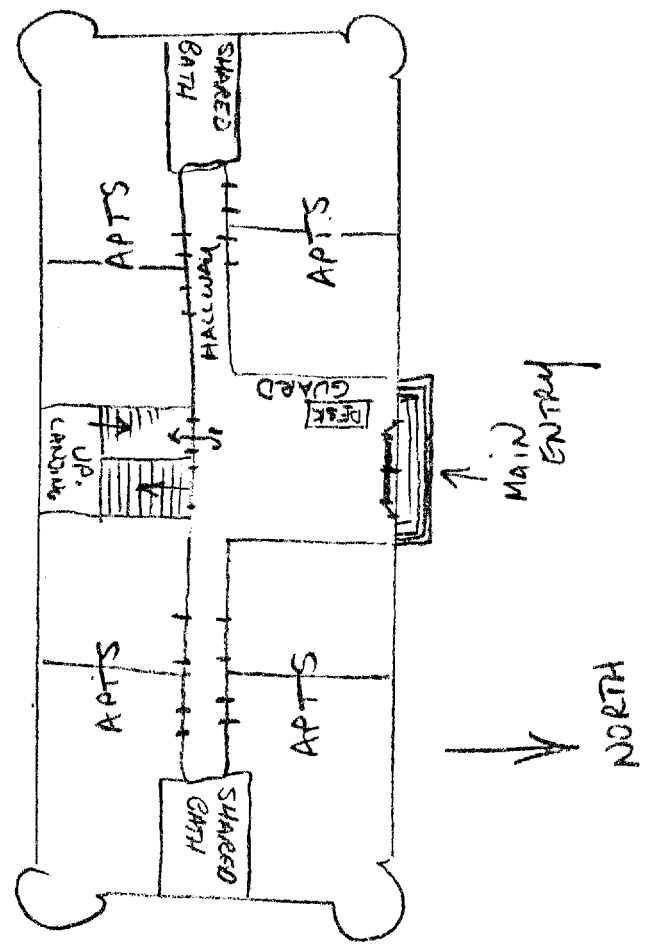
BASEMENT



↑
MAYBE ON
1ST FLOOR
(OR ENTIRE)

~~SECRET~~

1ST FLOOR.
SMALLER
APTS



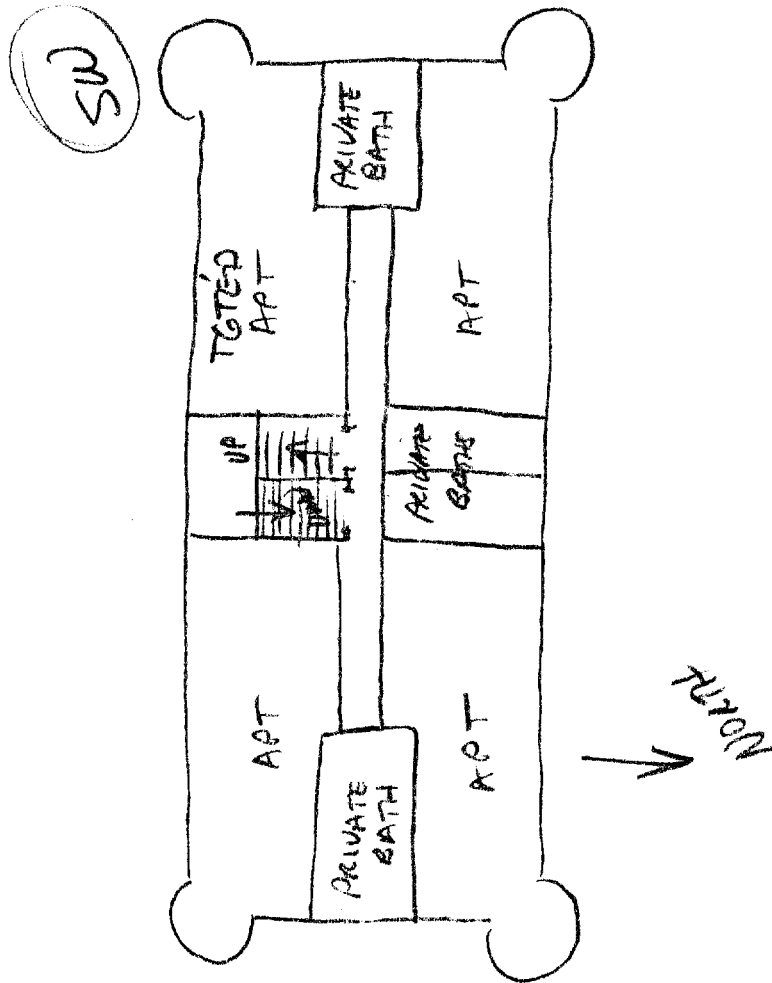
~~SECRET~~

~~SECRET~~

3

2ND FLOOR

LARGER APTS.



~~SECRET~~