

TAB

This document is made available through the declassification efforts
and research of John Greenewald, Jr., creator of:

The Black Vault



The Black Vault is the largest online Freedom of Information Act (FOIA)
document clearinghouse in the world. The research efforts here are
responsible for the declassification of hundreds of thousands of pages
released by the U.S. Government & Military.

Discover the Truth at: **<http://www.theblackvault.com>**

SG1A



31 Aug 82
0837

A - Curing C

B - ———

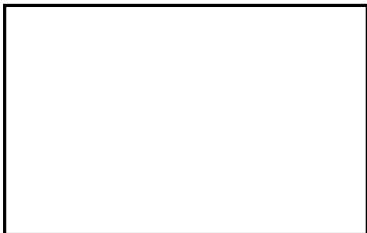
A Solid

B land C

A Solid

B land CFB

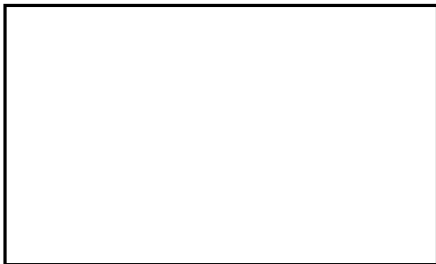
SG1A



A Vehicle, manmade

B Buildings CFB

SG1A



A Enclosed C Smooth

B - Shove

A Solid in C

B land

green
land sandy beach trees
water surrounding C
S-2
smooth
yellow or
green C
trees C
enclosed land sandy beach trees
water surrounding C
S-2
smooth
yellow or
green C
trees C

A solid in C

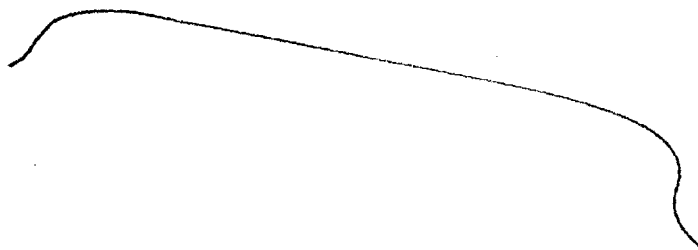
B water

SG1A

TAB

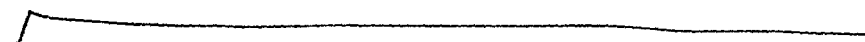
Tom
23 Sept 82
0855

27° 51' 9" N
82° 29' 10" W



A - solid
B - land c

27° 51' 9" N
82° 29' 10" W



A flat C
B land

S-2
hard c
rough CFB
grainy PC
Stone CFB
Brown CFB
Morning Sunlight
PC
dry CFB

27° 51' 9" N
82° 29' 10" W



A

A long

Conf Break

B —

S-Z

long c

flat c

hard c

directional c

manmade c

concrete c

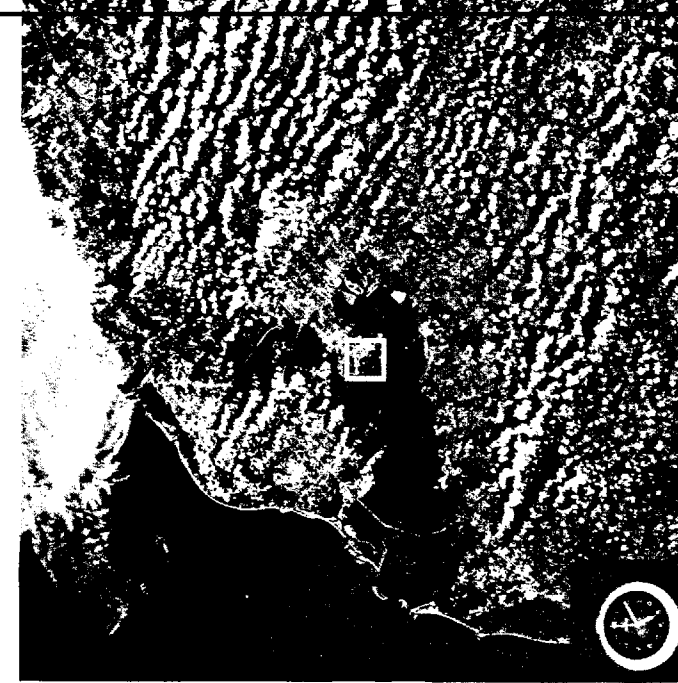
loud noises^{pc}

smells^{pc}

AT Break
Blah

noisy smelly
Busy Place
Airport

CPYRGHT



BOTH SKYLAB 3; ENLARGEMENT (LEFT) COURTESY TECHNICOLOR, INC.

HIGH-FLYING EYE yields bold detail in a striking enlargement of Skylab's imagery. The frame above shows Florida's Tampa Bay. MacDill Air Force Base appears as an angular speck on the Interbay Peninsula, extending into the bay at center. Clock shows time and sequence of the photograph.

Enlarged nearly 50 times (left), the airport comes into focus. Aircraft show up on a standby apron at lower left, beside the main runway. This combination of large-area coverage and high resolution makes such photographs ideal for mapping and urban-development studies.

AT ITS MEETING with the Father of Waters, the Ohio River joins the writhing and equally silt-laden Mississippi (following pages). Floodwaters fed by heavy rains and spring melt from far up the Mississippi linger in riverside fields; abandoned oxbows mark earlier meanders. Lying like a thread across farms that grid the Illinois prairie, Interstate 57 streaks south toward oft-flooded Cairo, wedged between the converging torrents.

Both with cameras and their own observations from the wardroom window, the astronauts could make quick and accurate appraisals of flooding, often difficult on the ground.

SKYLAB 1

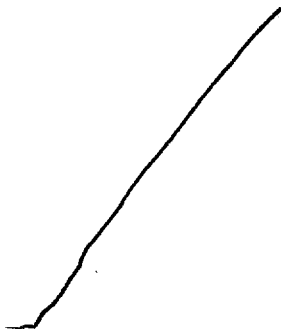
TAB

TOM

13 Mar 83

1435

44° 35' 26" N
104° 42' 54" W



A Rising
B land c

S-2

dark c

glass c

Toll c

mtncss

flat valley N

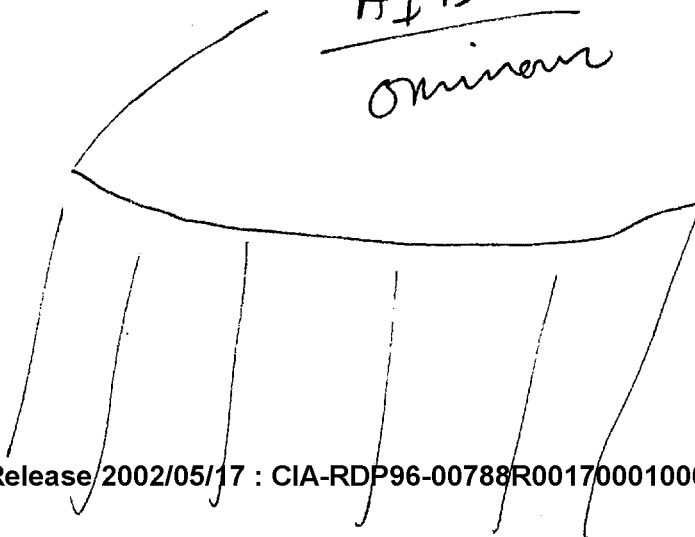
steep cliff c

water near CFB

Cuning

AI Break

Ominous



FLATTED
STEEP SIDES L
CURVING CFB

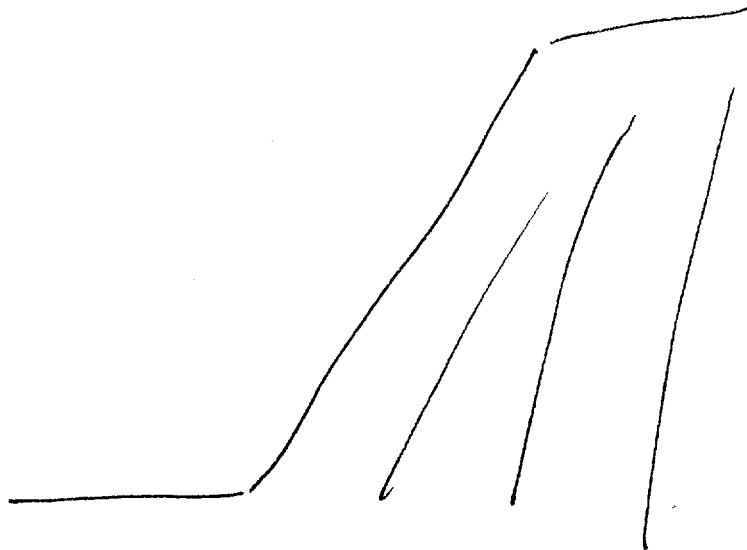
S-2

cool cfs
loose rock N

Abol Break
Mt Rushmore

S-2

irregular top pc
massive c
units color pc



SKETCH

End



KODACHROMES BY DEAN CONGER (ABOVE) AND DAVID S. BOYER © N.G.S.

Gigantic stone stump, Devils Tower rises 1,280 feet above the Belle Fourche River in northeastern Wyoming. It took shape millions of years ago when molten rock, forced up from below, cooled near the surface. Water has since eroded away the softer stone around it.

Near-vertical columns of Devils Tower National Monument provide a challenging rock climb, as these members of the Iowa Mountaineers discover. Legend ascribes the cracks to the claws of bears; when the animals tried to catch Indian maidens, the girls jumped onto a low rock that saved them by soaring skyward.



TAB

Tom

13 Jan 84

0943

38° 59' 25" N

104° 51' 28" W

m Break

38° 59' 25" N

104° 51' 28" W

A rising sloping
solid

B-

38° 59' 25" N

104° 51' 28" W

A Rising sloping
manmade

B -

S-2

lite color c

angles c

curving c

38° 59' 25" N

104° 51' 28" W

A Rising vertical
manmade

B structure

S-2

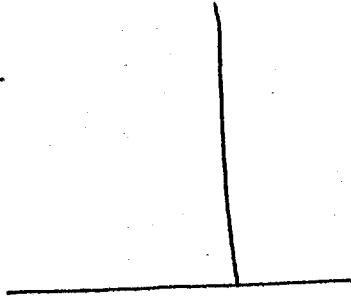
tail c

thin c

Patterned c

38° 59' 25" N Break

38° 59' 25" N
104° 51' 28" W

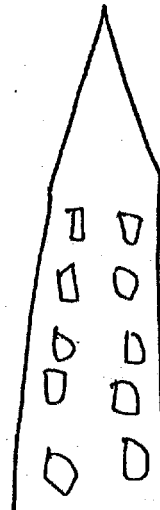


A Rising Vertical
manmade
B —

S-2

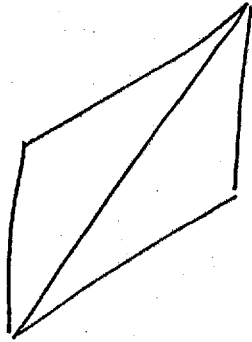
tall pc
rising c
sloping c

At Beach
Neat



SK

SK



C

S-Z

D

AI

EI

T

I

AOL

Bx/Sig

hand c
off white c

large pc

angles c
edges c

artistic c

sloping c

sloping c

raised c

AI Break
NeatAI break
attractive

modern c

crisp c

centered pc

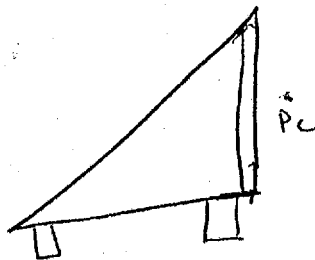
central pc

centered pc

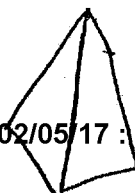
observed pc

solid pc

SK

edges c
angles c

height c

rough
future pc
cold cSK
c

S-2

D

AI

EI

T

I

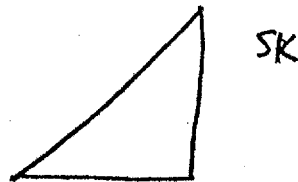
AOL

AOL SIG

wedge c



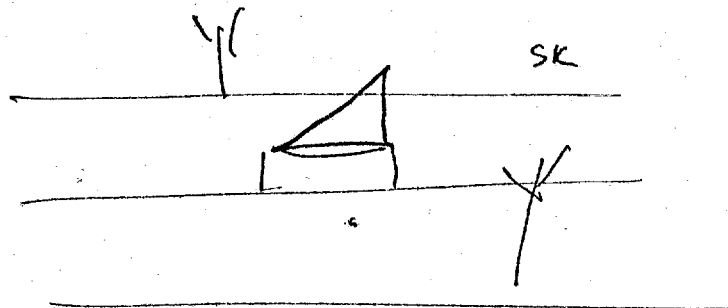
slopes c



multi
angles c

raised c

concrete
area c



trees N

sidewalks PC

S-2

D

AI

EI

T

I

AOL

AOL/S16

cold c

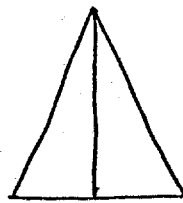
artistic c

geometric c

modern c

technical c

science c



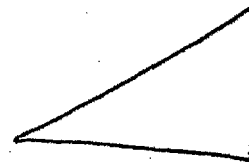
SK

TOP VIEW

angle
slopeartistic c
commutative c

SK

END VIEW



SIDE VIEW

waiting

People c
standing cPeople coming for
stopping a while
and
going

cold c

Transportation c

aerodynamic c

waiting c

People c
waiting

6

S-2

D

AI

EI

T

I

AOL

AOL/Sig

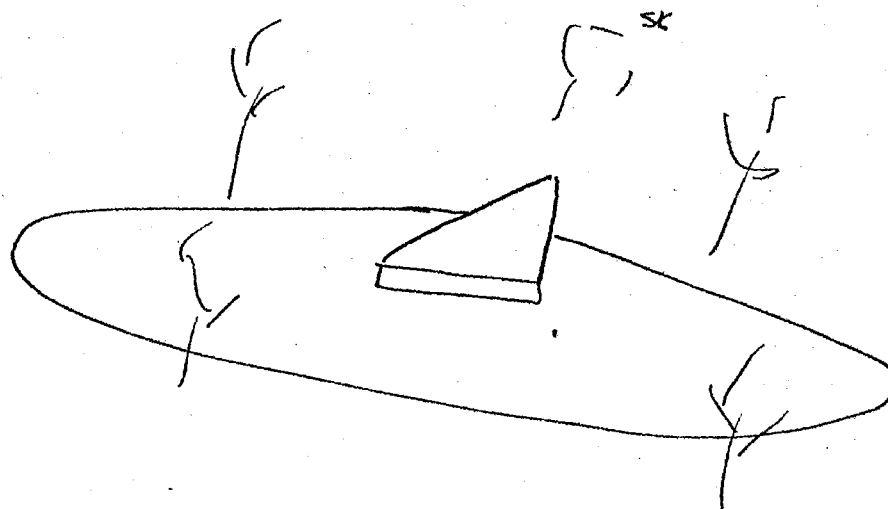
Colors PC

artistic PC

sounds PC

car sounds N

Art Break
like a park



Area C

Trees N

concrete

wedge

nesting area

social area

people related

assembly

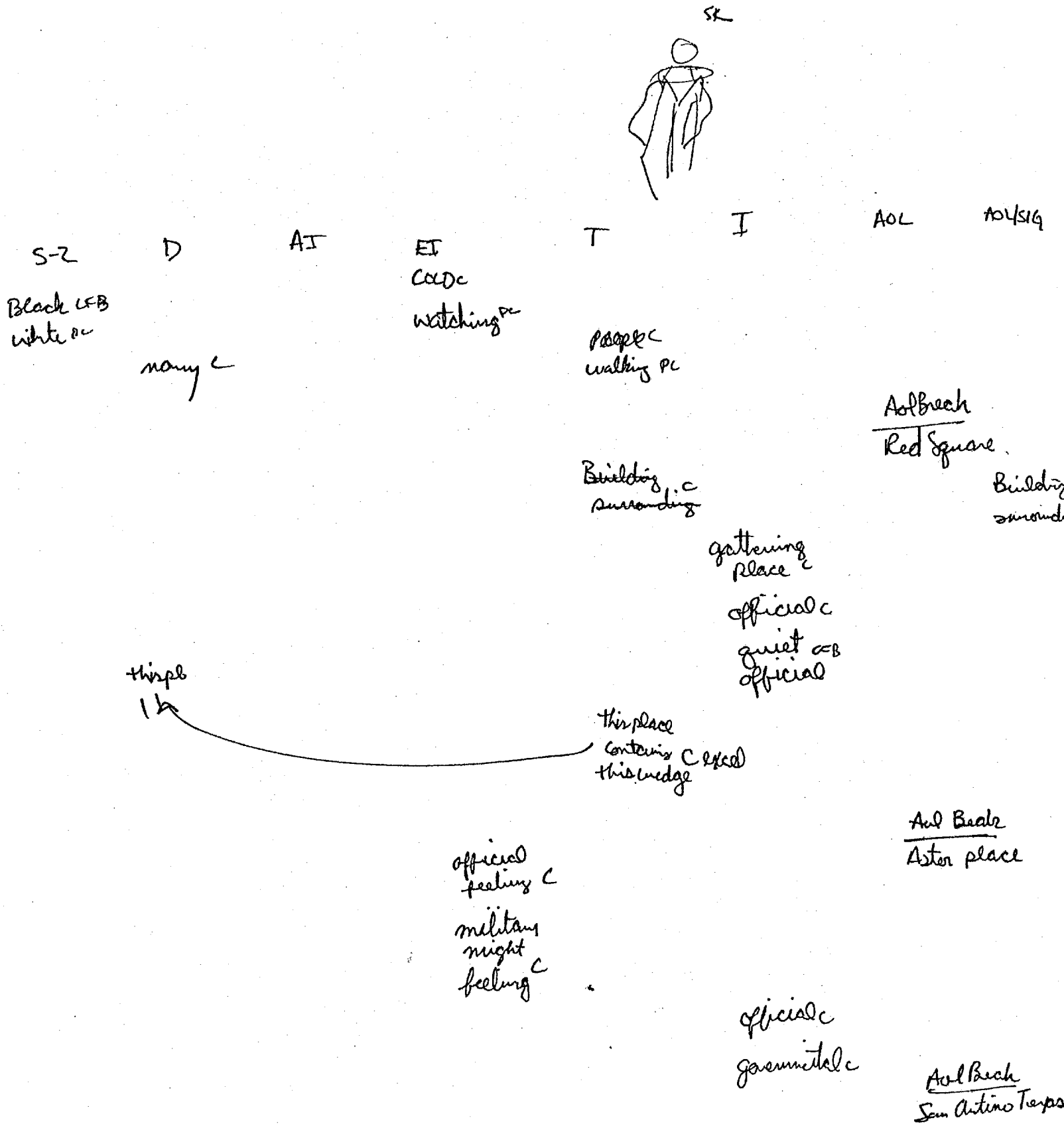
significant

Art Break

Tour

tourist area

People
kennel
cats



S-2

D

AI

EI

T

I

AOL

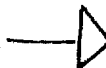
AOL SIG

mil lose

AOL Break

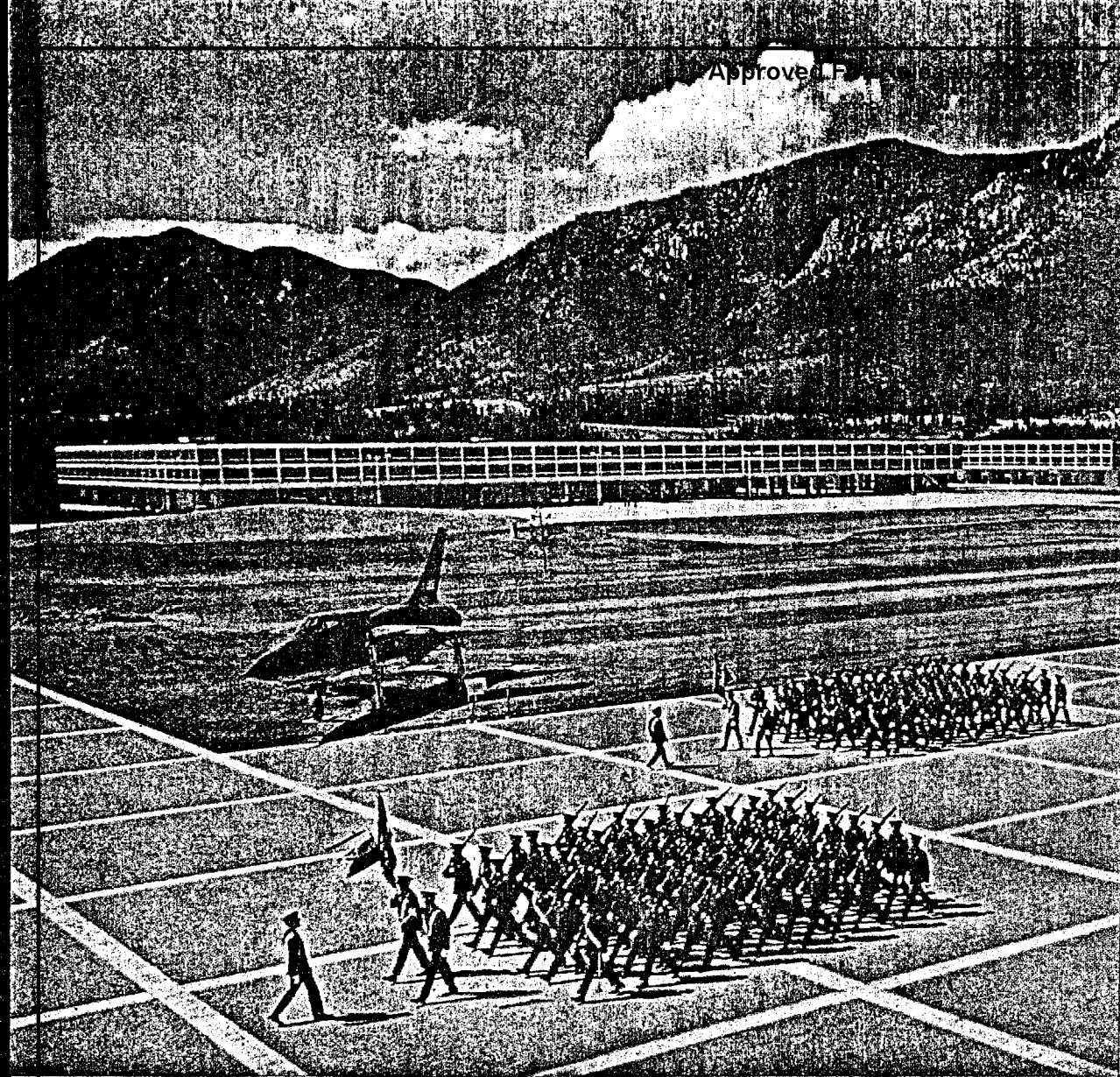
AOL SIG

Air Force
academy
in Colorado



End

TAB



America's school of the air, counterpart of West Point and Annapolis, the United States Air Force Academy north of Colorado Springs now instructs 3,200 future officers, giving them a foundation in both the humanities and sciences. Here, by an F-105 fighter

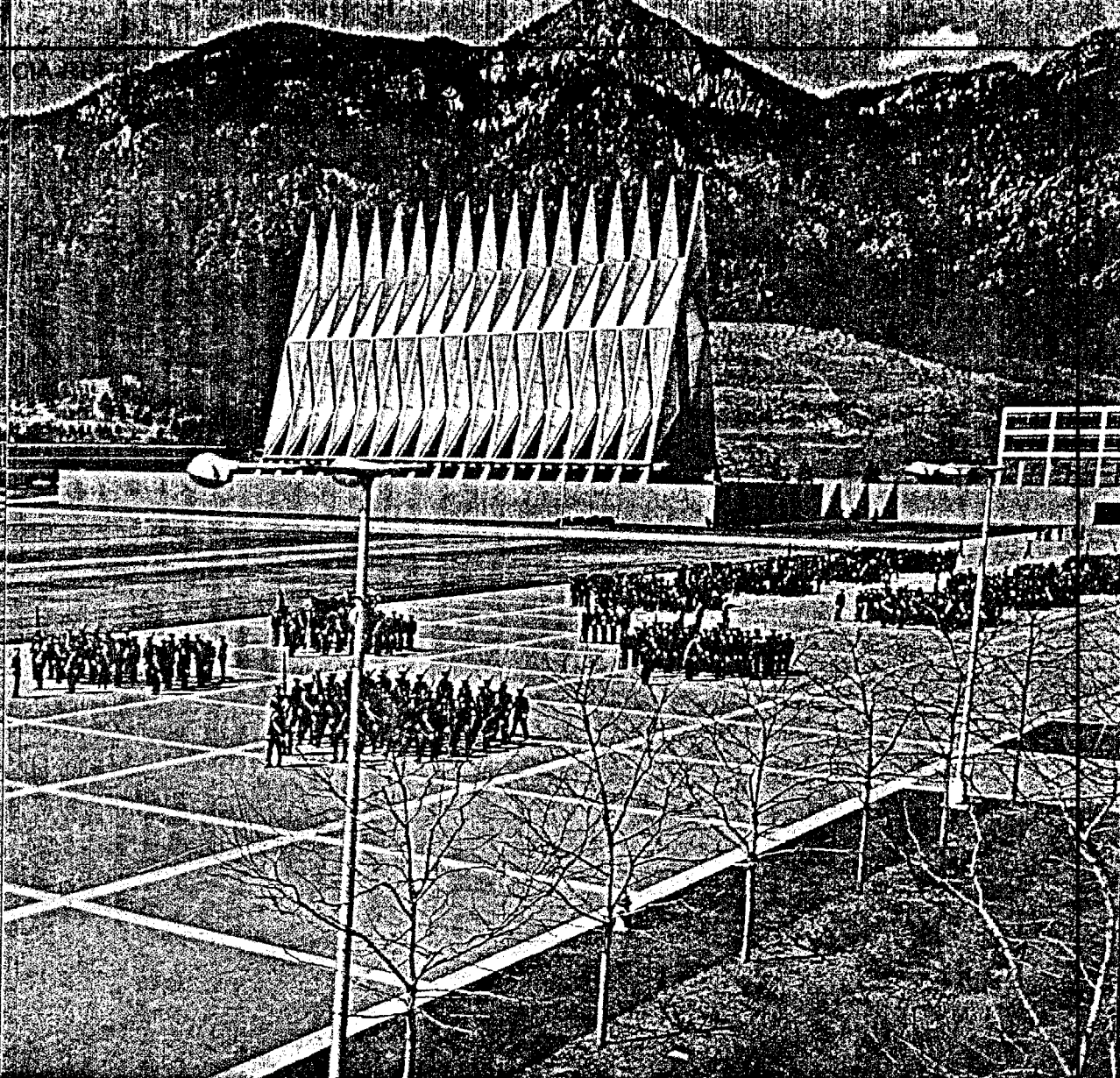
to know the road," Nick said cheerily. "I've lived all my life right down there at Cascade." Pointing out over a 2,000-foot drop, he took another curve with scarcely a glance.

Wending skillfully through the "W's"—a series of switchbacks clinging to the mountainside around 13,000 feet—Nick chatted

quite a mountain you've got," I said, looking back up at Pikes Peak.

"She's a good old mountain," he replied—"a real good old mountain."

Approved For Release 2002/05/17 : CIA-RDP96-00788R001700010001-3
The Pikes Peak Colorado Springs region



KODACHROME BY GARY GUISSINGER © N.G.S.

plane that commemorates academy graduates killed in Viet Nam, blue-clad cadets drill for June Week parades. In the background, 17 tetrahedral spires soar 150 feet above the all-faith chapel, shadowed on the west by the rugged and aptly named Rampart Range.

making it the single most popular attraction in Colorado.*

I arrived there on a Saturday afternoon, and Capt. Michael P. McRaney, community-relations officer, graciously left unfinished a trout fly he was tying and showed me around. 15 years old, the academy is scaled

rooms. The famous Cadet Chapel, with its striking aluminum-and-steel spires, soars 150 feet into the Colorado sky (above).

The academy teaches some 3,200 cadets subjects ranging from astronautics to vertebrate embryology, preparing them to become career officers in the Air Force.

TAB

TOM
10 Feb 84
1640

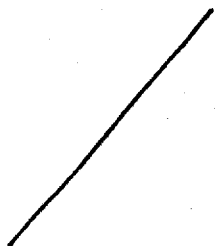
16° 31' S
28° 50' E



A flat sloping up
angle
manmade c

B —

16° 31' S
28° 50' E



A sloping up
manmade c

B structure c

16° 31' S
28° 50' E



A flat sloping up
the angle up
manmade c

B - structure

S-2

light color c

warm PL

light brown c

dry PL

large c

rising c

AT Break
nice

S-2

D

At

ET

T

I

ABL

ABL/SIC

old OFB

large

white c
lite brown

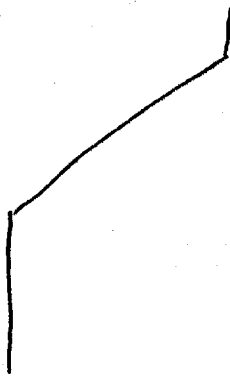
flat
area c

At Break
Pretty c

Pretty c

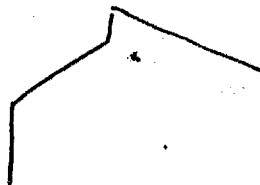
sloping c

SK



wall c

SK



hard c
texture c

hill c

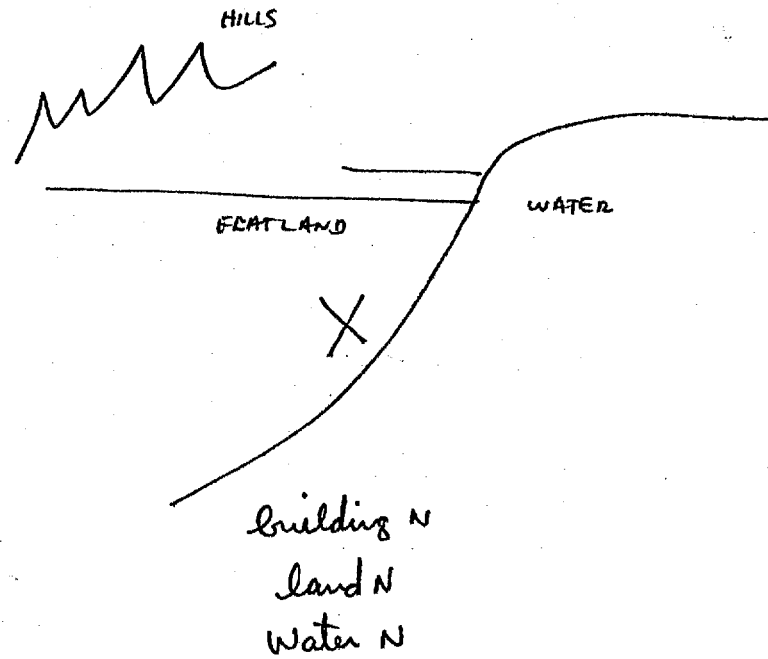
modern
shape c

fun OFB

AOL Break

hill
w/ flatland c
and
water nearby

SK



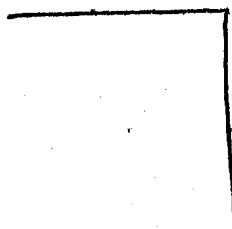
SK



A sloping up
manade
B structure

A sloping down
manade
B structure

16° 31' S
28° 50' E



A flat angle
Vat manade

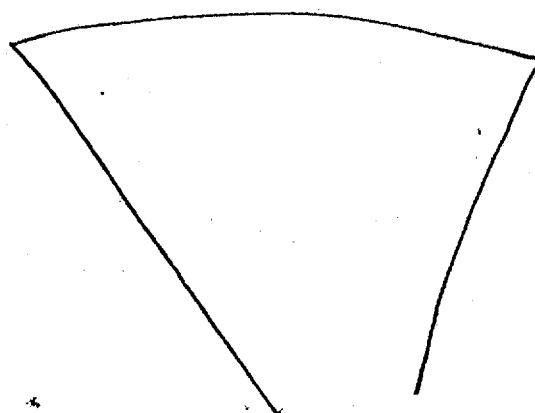
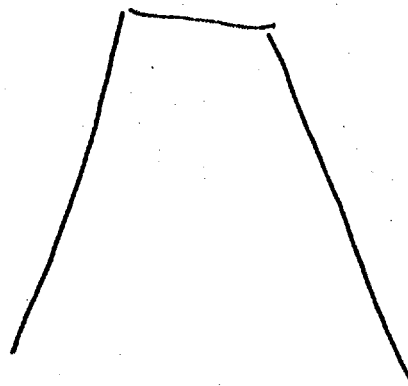
A flat fluid

B water

A Vat solid manade

B s/w interface

SK



(WA

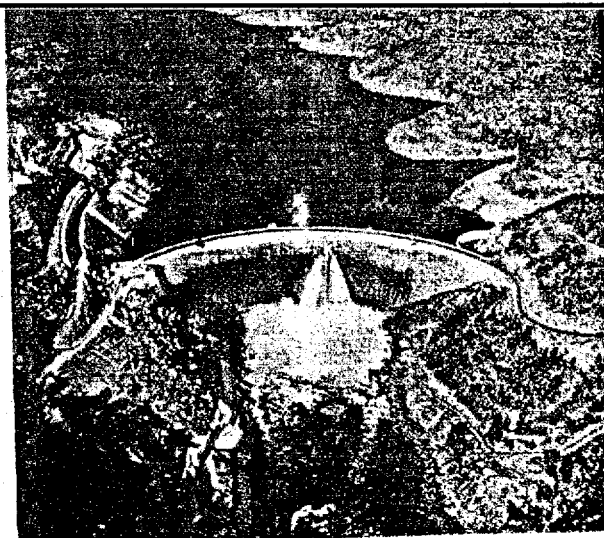
ASWAN

CPYRGHT

gray transformers hummed, the roof pulsed underfoot, and air conditioners labored against suffocating underground heat.

European firms, under contract to the Federal Power Board, have spent more than seven years and \$221,000,000 to construct the dam and power facilities, which theoretically could supply electricity for all central Africa. But the cost was not reckoned in cash alone. On a hill overlooking Kariba, Italian workmen erected a church in their spare time, dedicating it to St. Barbara, patroness of builders. Inside, beneath a statue of the Virgin, a marble slab bears the names of those who gave their lives to tame the Zambezi. Europeans and Africans, they number 86.

618



TAB

inclination - tension, slight headache, wound up

Approved For Release 2002/05/17 : CIA-RDP96-00788R001700010001-3

TOM

19 APR 84

1008

20° 10' N

87° 29' W - m Break

20° 10' N

87° 29' W

A sloping up
solid

B land

20° 10' N
87° 29' W

A curving
solid

B -

A solid

B lands

m Break

20° 10' N

87° 29' W

Approved For Release 2002/05/17 : CIA-RDP96-00788R001700010001-3

A curving
fluid

B water

20° 10' N

87° 29' N



A currier.
solid

A land

A fluid

B water

S-2

currier of B

solid c

white of B

green PL

rising c

At Break

Island

At Break

interesting

At Break

Pretty m

SK

S-Z

D

AI

EI

T

I

AOL

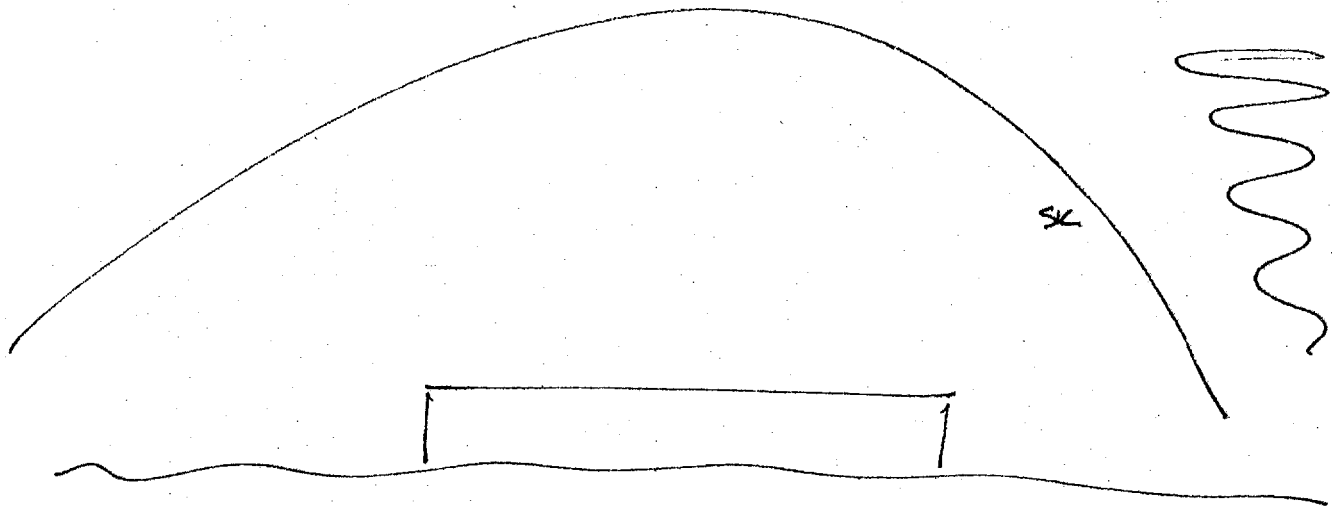
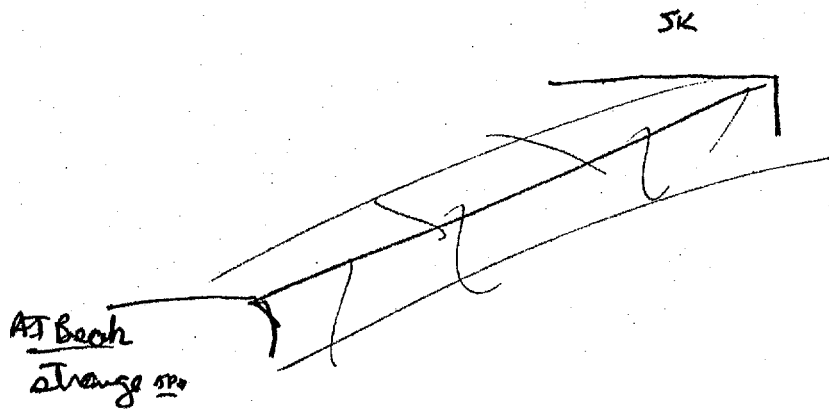
AOL/SIG

green PL rising

irregular

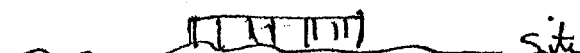
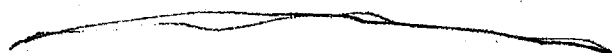
manmade

flat

land
watergray PL
hard
cool CS
waterA complex
manmade

B-

SK



site

in the back
there

S-2

D

AI

EI

T

T

AOL

A01514

long PC

tall vfo

raised c

flat c

wide PC

hand c

sound c

manmade
sound c

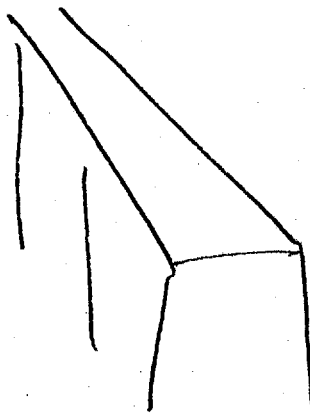
Aol Bush

Bridge

Aol Bush

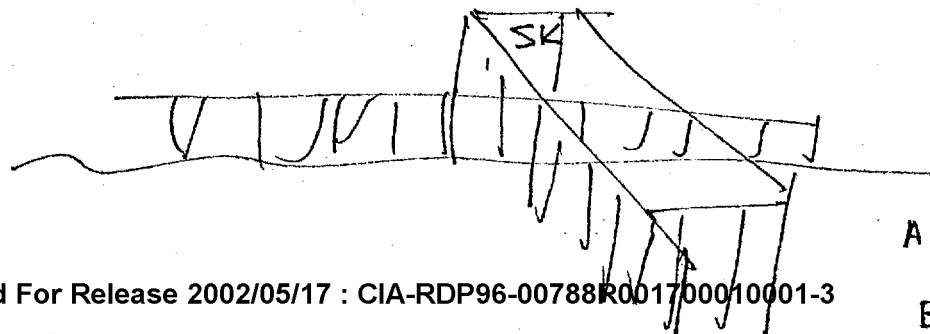
Pier

SK



flat
land

manmade
raised c



A Jet
manmade

B-

S-2

D

rising
flat

long
wide

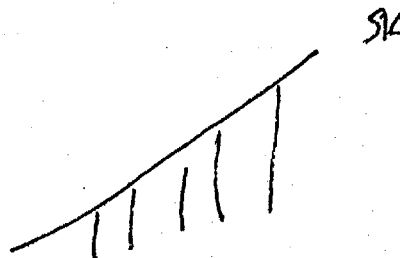
raised

tall FB

solid

sloping
up

sloping
up



Aol Break
Bridge

Aol Break
Dam

Aol Break
Roller Coaster

S-2

Approved For Release 2002/05/17 : CIA-RDP96-00788R001700010001-3

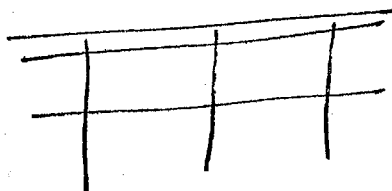
ADL

AOL/SIC

raised c

sloping c
flat cAI Break
strangeAI Break
interesting

SK

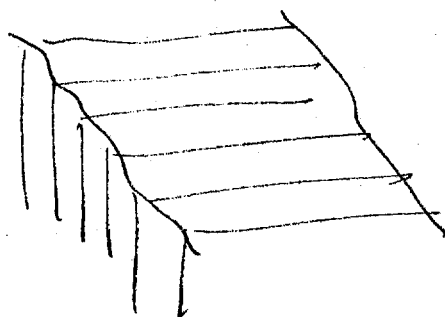


divided c

longer
thin

dark gray c/s

SK



lines

lines PC
supportsAI Break
supports

S-2

D

AI

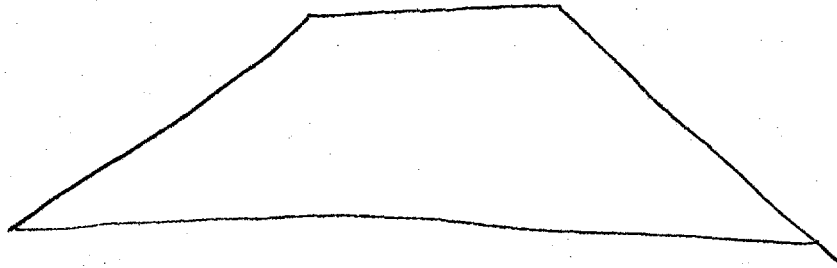
EI

T

I

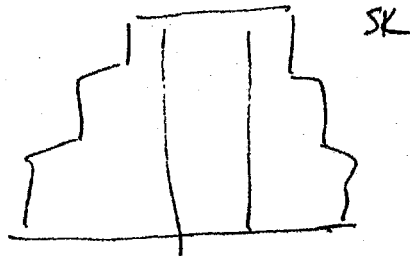
AOL

AOLSIG



brown PC

rising c
large OB



AFBual
nest relaxing
 interesting

oldc

SK



S-2

D

A4

E1

oldc

pyramid

structure ~~star~~

LA

DO

TO

OO

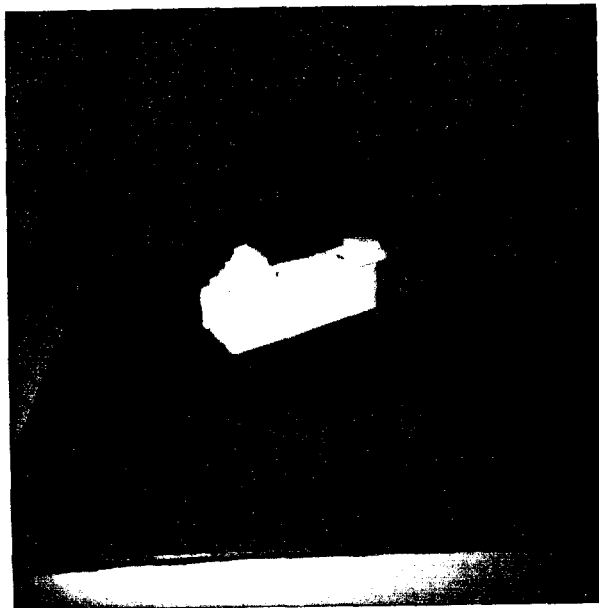
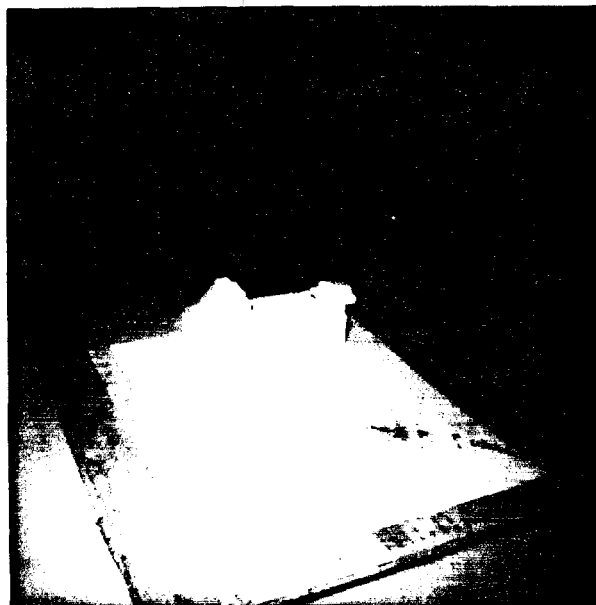
TOLoo

AOL Break

Toledo

End

61 MINUTES





TAB

Tom
24 APR 84
1035

35° 18' 36" N
93° 13' 53" W

M Break

Aol Break

sloping up land
intr.

35° 18' 36" N
93° 13' 53" W



A flat

Aol Break

water N

35° 18' 36" N
93° 13' 53" W



M Break

35° 18' 36" N
93° 13' 53" W

A flat sloping up
solid

B land

S-2

deep brown cfb

green cfb

irregular Pc

sloping cfb

Asphalt

seashore

35° 18' 36" N
93° 13' 53" W

A flat solid

B land c

S-2

light brown cfb

sunmy cfb

warm cfb

Breeze cfb

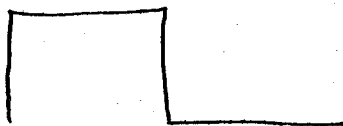
manmade c

3

35° 18' 36" N
93° 13' 53" W

A slopin up
solid
B-

35° 18' 36" N
93° 13' 53" W



A rising
mamade

B-

A flat
mamade

B-

S-2

gray PL
cool CFB
hard c
textured c
rising c
angles c
round c
mamade
sunda c

AI Break
Complex

complex c

colors PL
Red CFB
yellow CFB

AI Break
interesting
interested

Aol Break

AI Break
strange

like an old
castle

S-Z

D

AI

EI

T

I

ADL

ADL/Sig

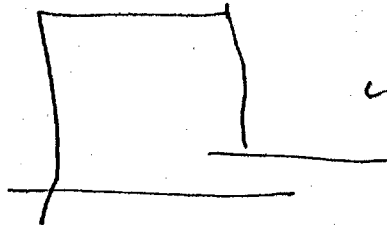
brown CB

large c

angles c

Aol Break
wonderful

multi
levels c

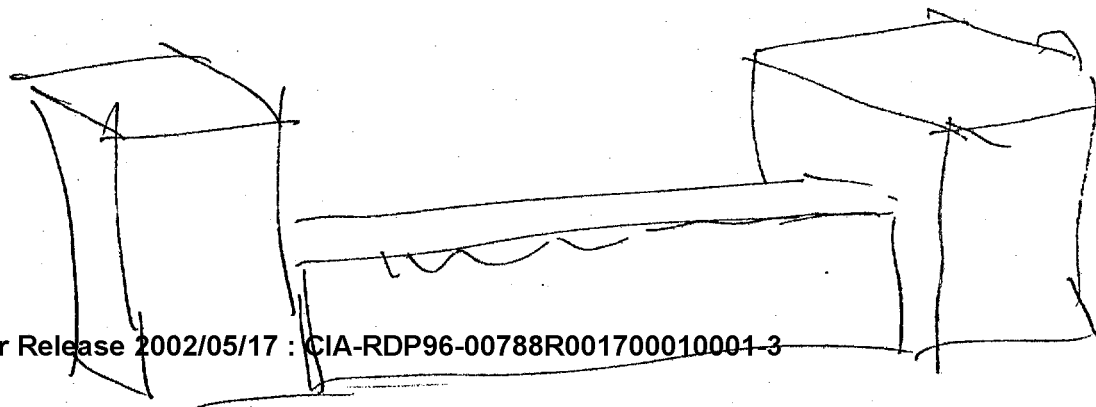


large c
wide c
long c

massive
solid c

sectional c
connected c

SK



S-2

D

AI

EI

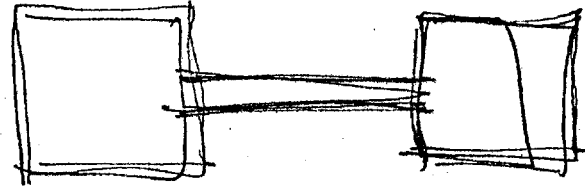
I

I

AOL

AOL/SI

AOL Break



AOL Break
Great Wall
of China

AOL Break
old

gray "
hand c

large c
wide c
flat c
raised c

patternd pc
like gray pc

AOL Break
Stone or Concrete

AOL Break

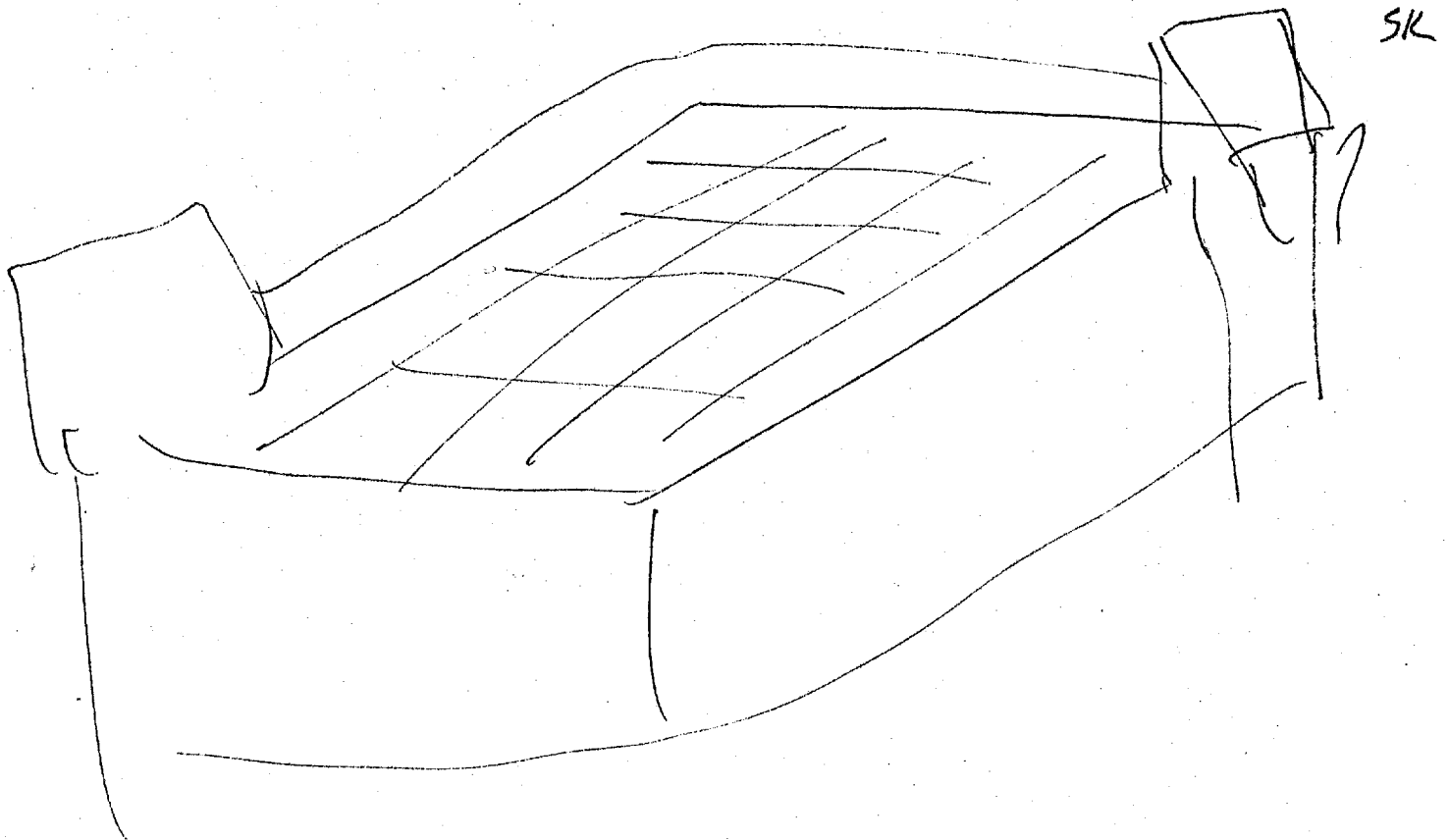
Strange feeling

butterfly in stomach
feel like in high up

solid pc
flat c

raised
area
big flat area c

AOL Break
wind app



Asl Break
large Walled
in area

AI Beach
interesting

relaxed

quiet

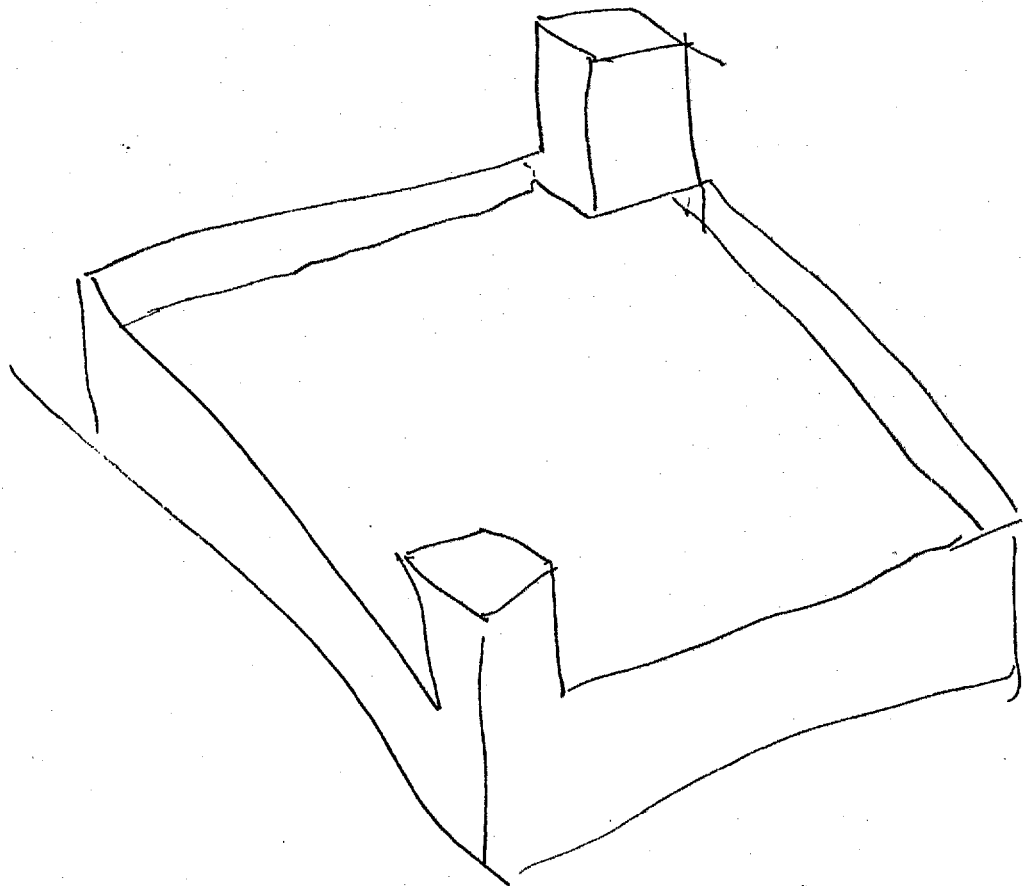
observing PC

overlook

Can Beach
observing

Al Beach
like a raised
terraced

SK



larger

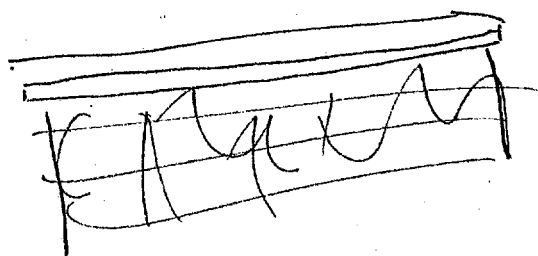
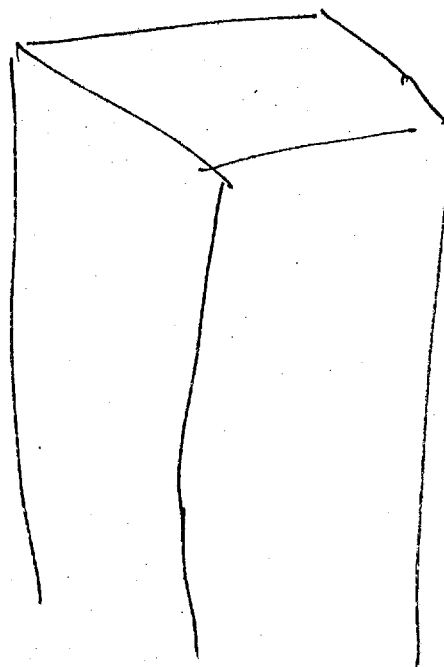
high

white gray PC
patterned

raised sections



Wallsc



AF Beach
Confusing

AF Beach
Prison

SK



A curving
manmade
B —

raised

raised c

cylinder c

S-2

D

AI

EL

I

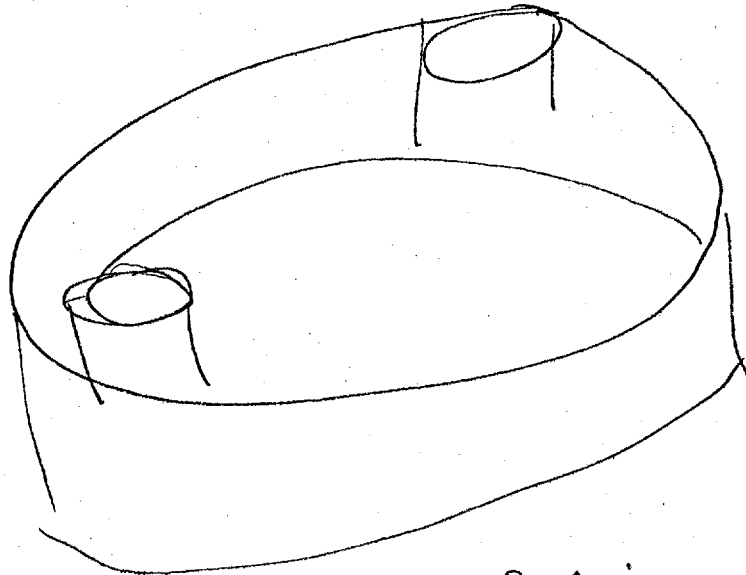
I

AOZ

AOZ/516

Emotional
place

Aol Break
emotional
Place



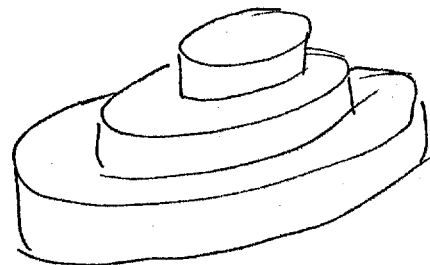
Enclosing PL

Enclosing



A Curving
manade

B-



Aol Break

1119 111

5-2

D

AI

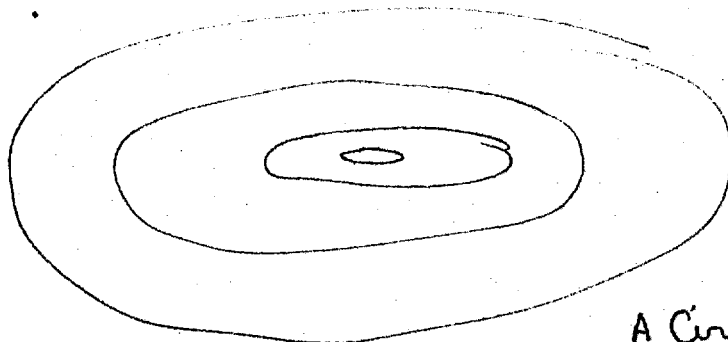
EI

10

I

AdL

AdL/Sig



raising

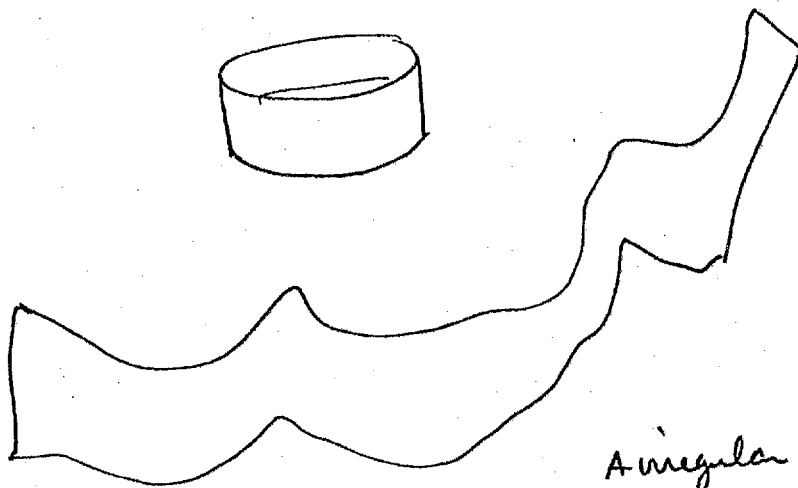
At Bed
causing

A Circling
manmade

B-

Wall

curving
wall



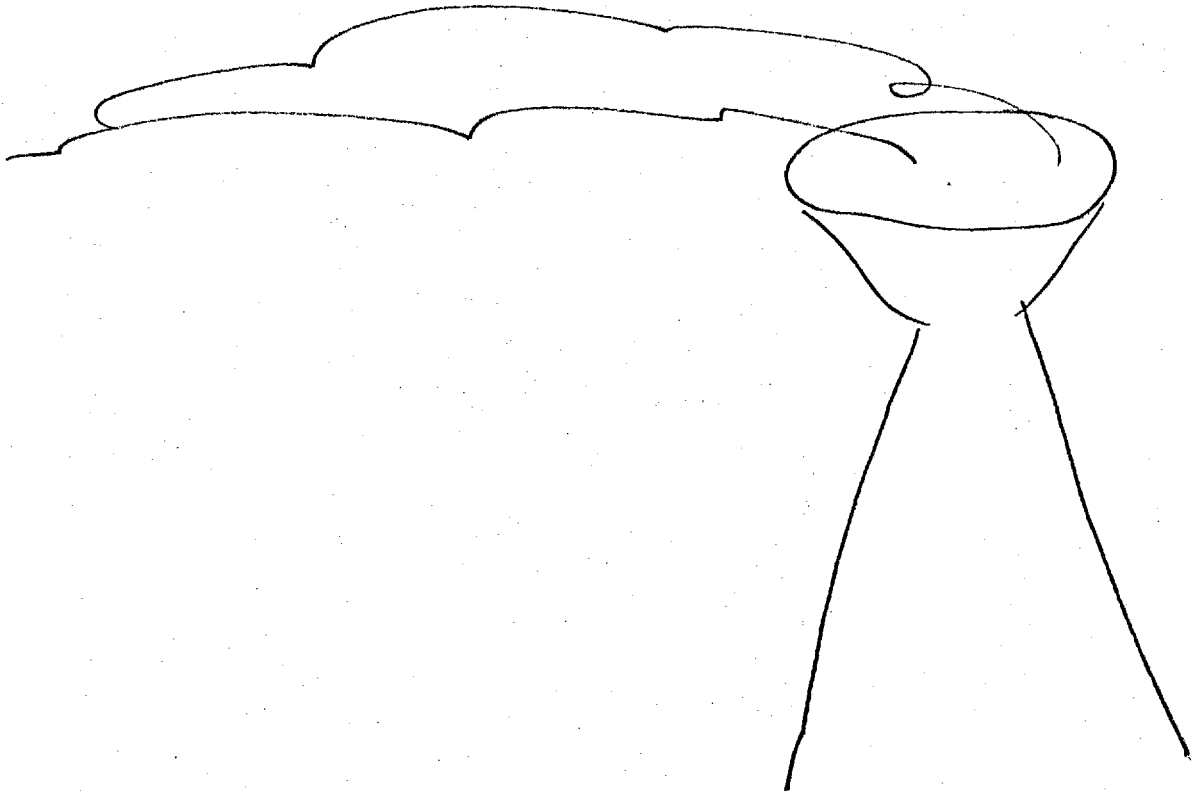
A irregular
curving
manmade

B-

up and
down

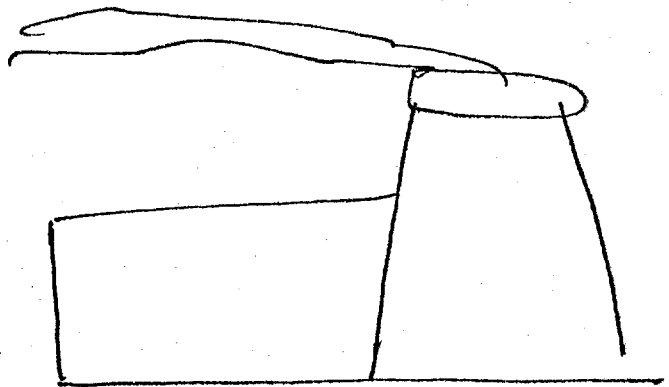
Beak

AdL Beak
Large Dish
a fence



S-2
heat

D AI EI T I AOL AOL SIG



Cylindrical
structure

building

heat

power
generation

module

S-2

D

AI

ET

T

T

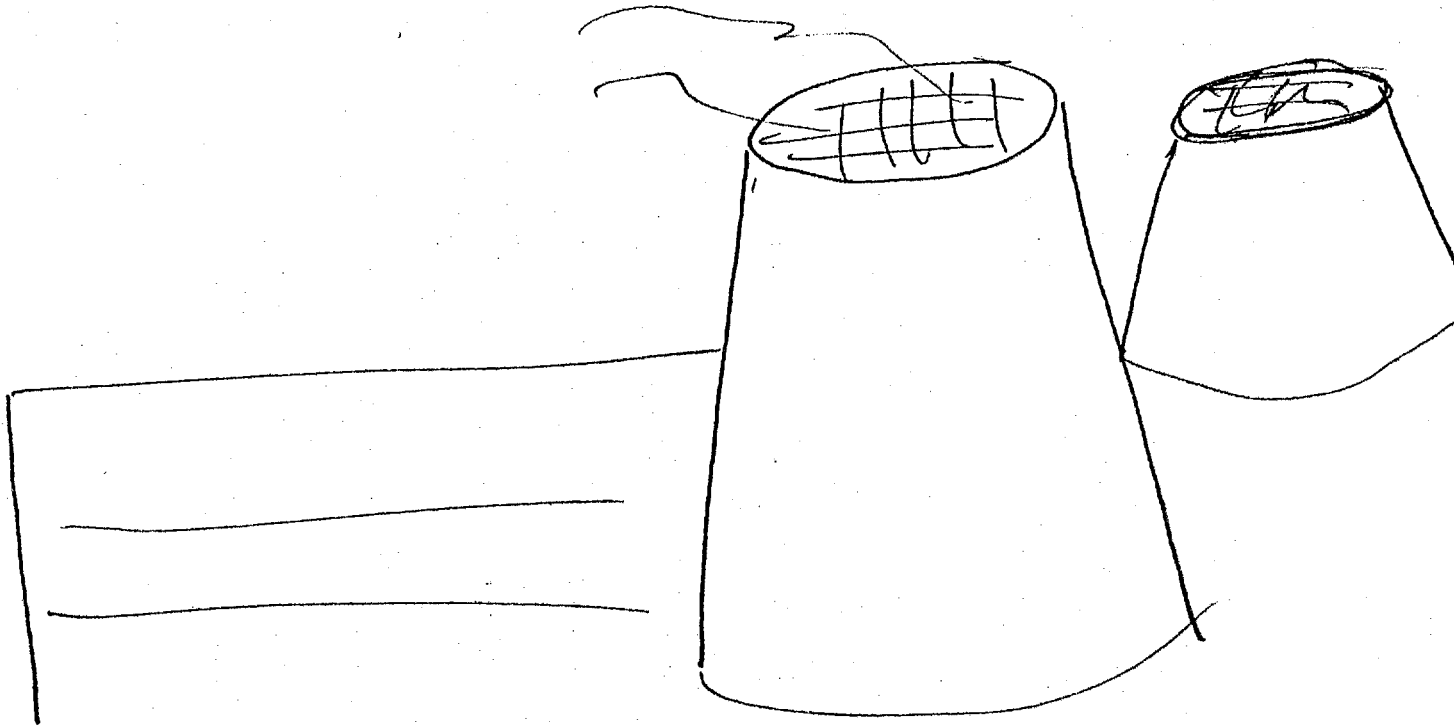
AOZ

ASL/SIG

humming
drones

steam off

SIC



powerful

powerful

ATOMIC
POWER
GENERATOR

SITE

DIMENSIONALS

large

wide

long

massive-solid

flat

raised

high

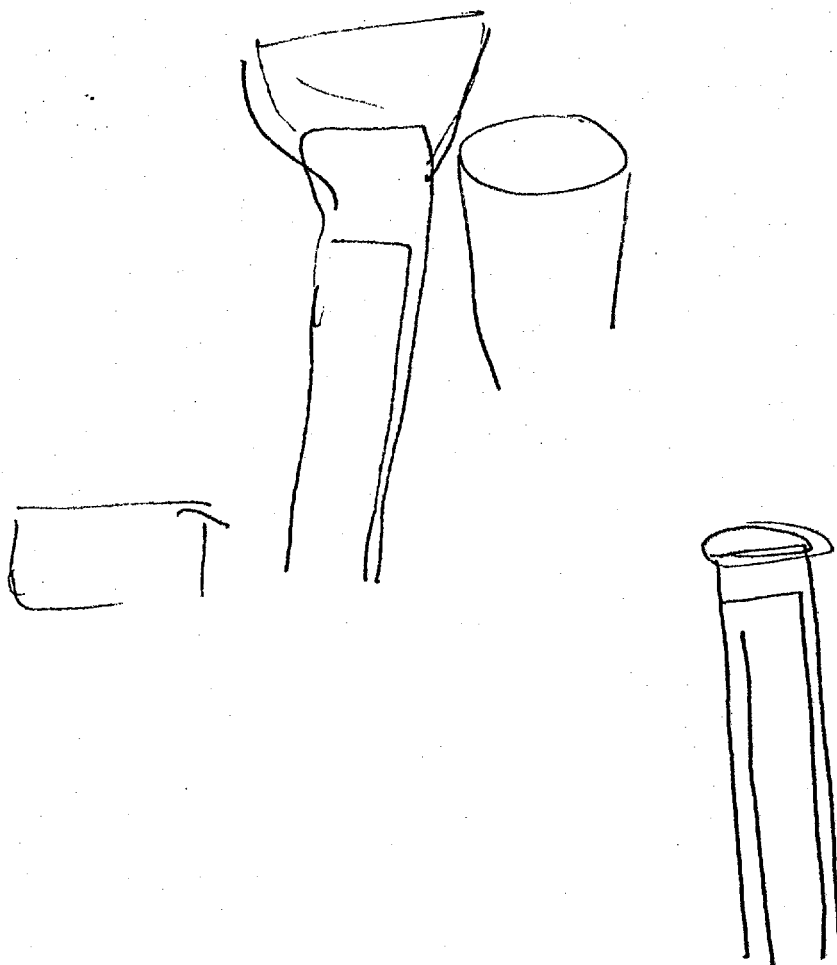
enclosing

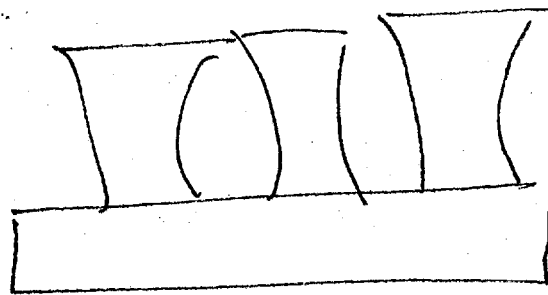
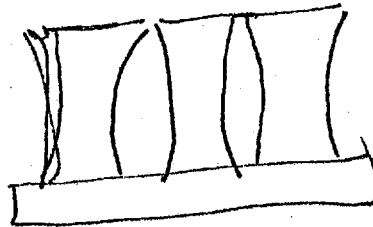
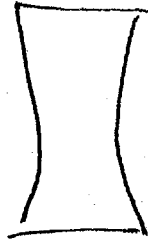
raising

cylindrical

Aal Beak

this way or that





1200
End

Asl Break
Caribea

who
do
do

ah-

Wa

kin

~~AK~~

ARK

ARKO

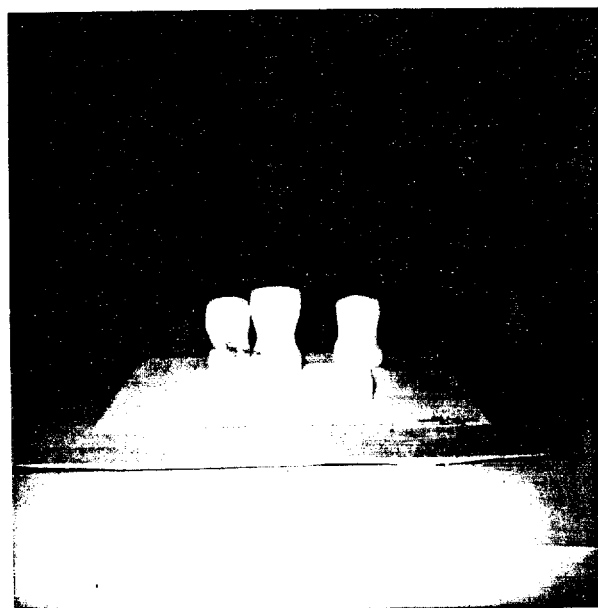
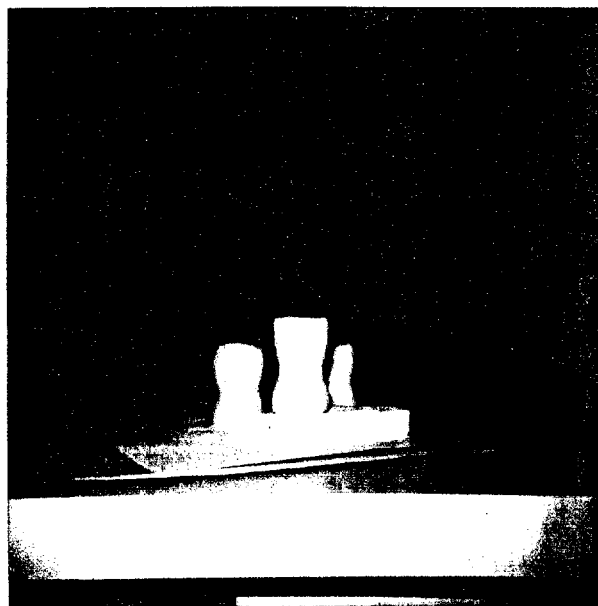
ARKUS

ARKLA

ARKUS

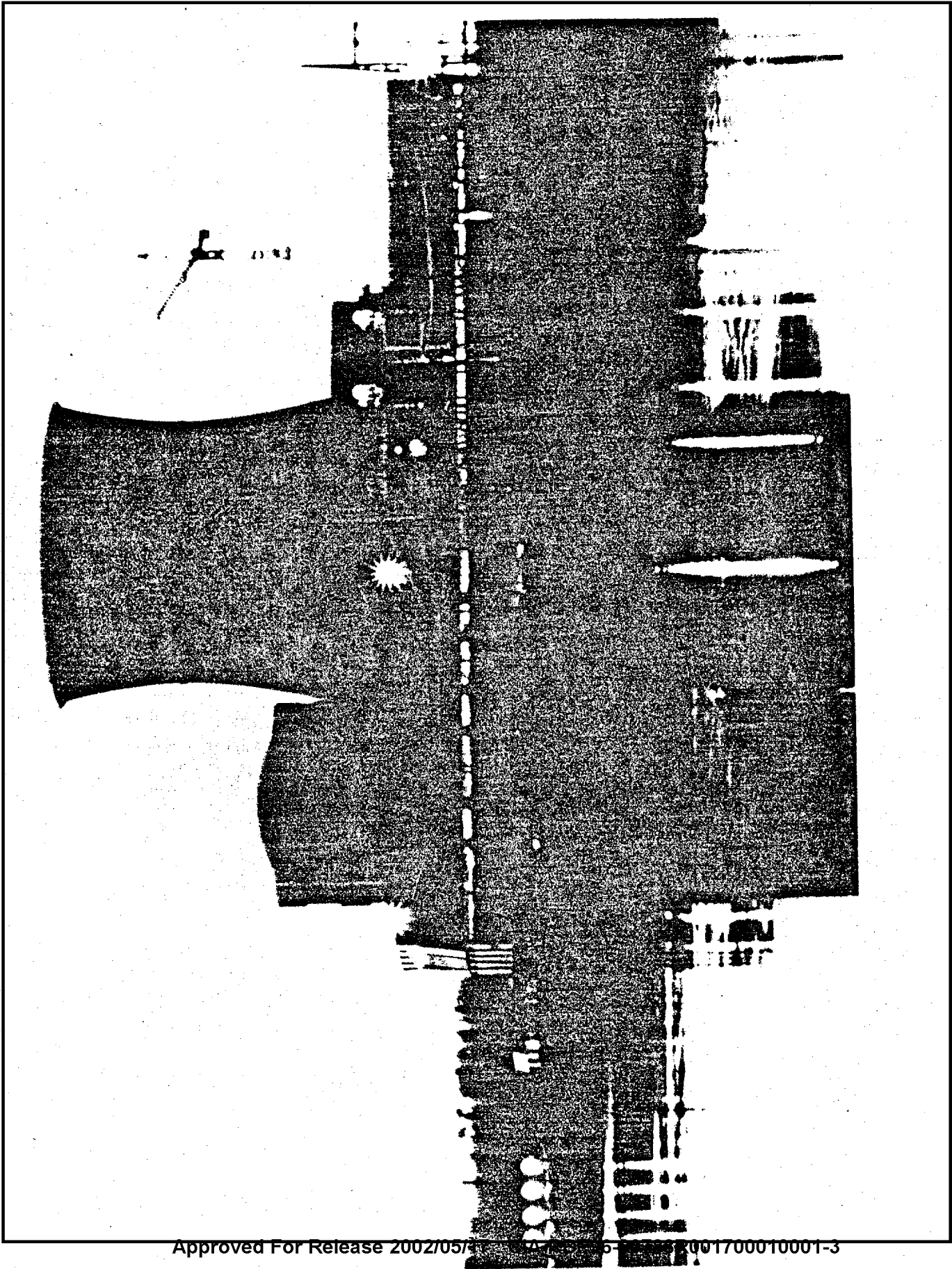
End

1203

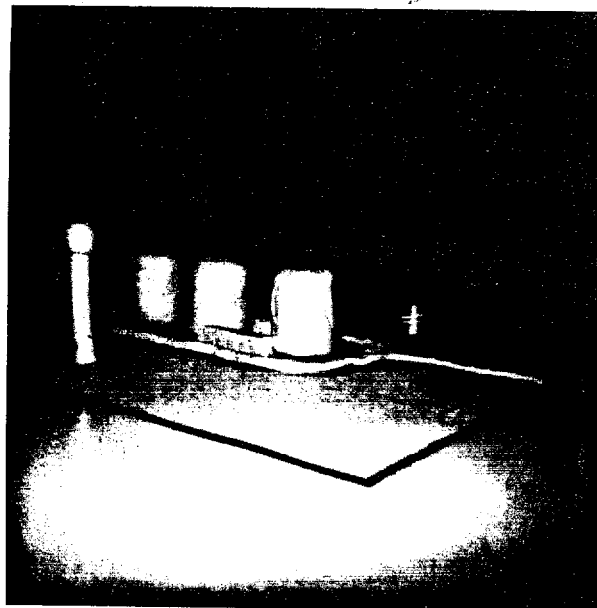


CPYRGHT

ARKANSAS NUCLEAR POWER PLANT



TAB



Tom
15 May 84
1146

47° 57' 23" N
118° 58' 50" W -

At Break

Bridge
blue and white

47° 57' 23" N
118° 58' 50" W

A rising c
sloping c
in break

47° 57' 23" N
118° 58' 50" W

A sloping up c
angle c
sloping down pc
manmade

B—

47° 57' 23" N
118° 58' 50" W

A sloping up c
manmade c
B structures c

S-2
smooth pc
pattern c
gray brown pc
larger

At Break

S-2

dry R₂
textured
hard cAol Break
stern or concrete

Wanna CFB

S-2

D

AJ

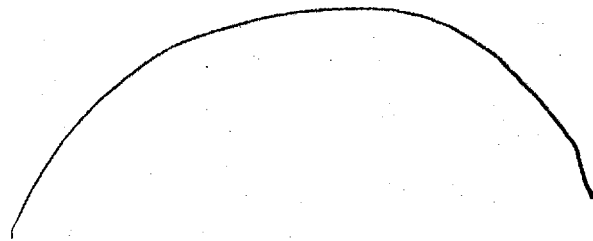
EJ

T

I

AOL

AOL/SIG

Aol BreakDam Dam
Site

curve

curving

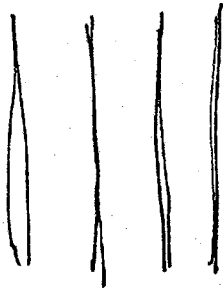
high
and C
long

spillway

slowing

land.T

curving



A flat
manmade

B -

S-2

gray
flat
open

Aol Break

power generation plant

GA

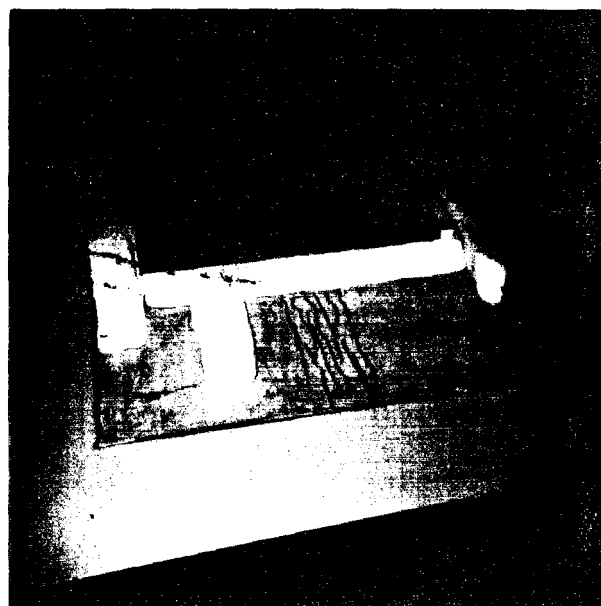
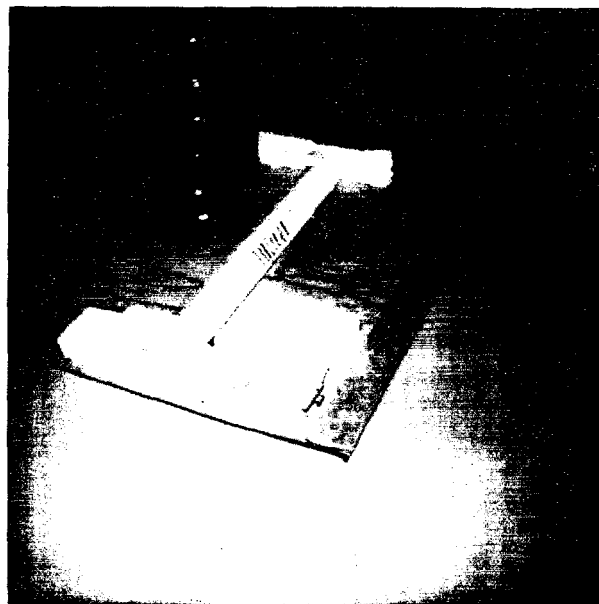
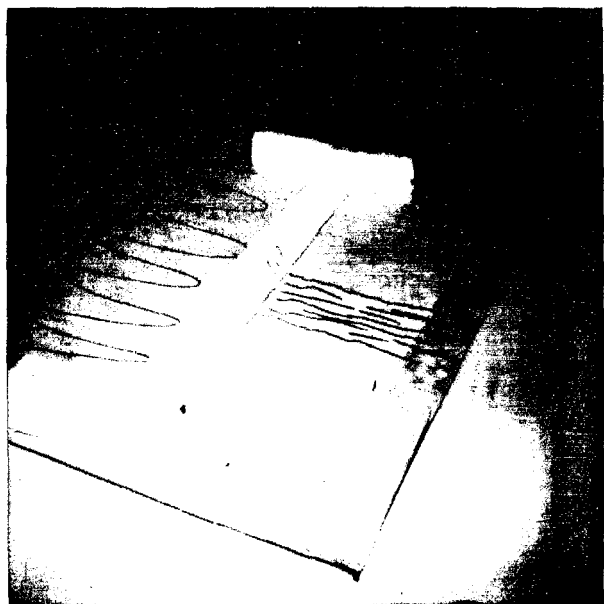
RA

GRA

SON

CANYON

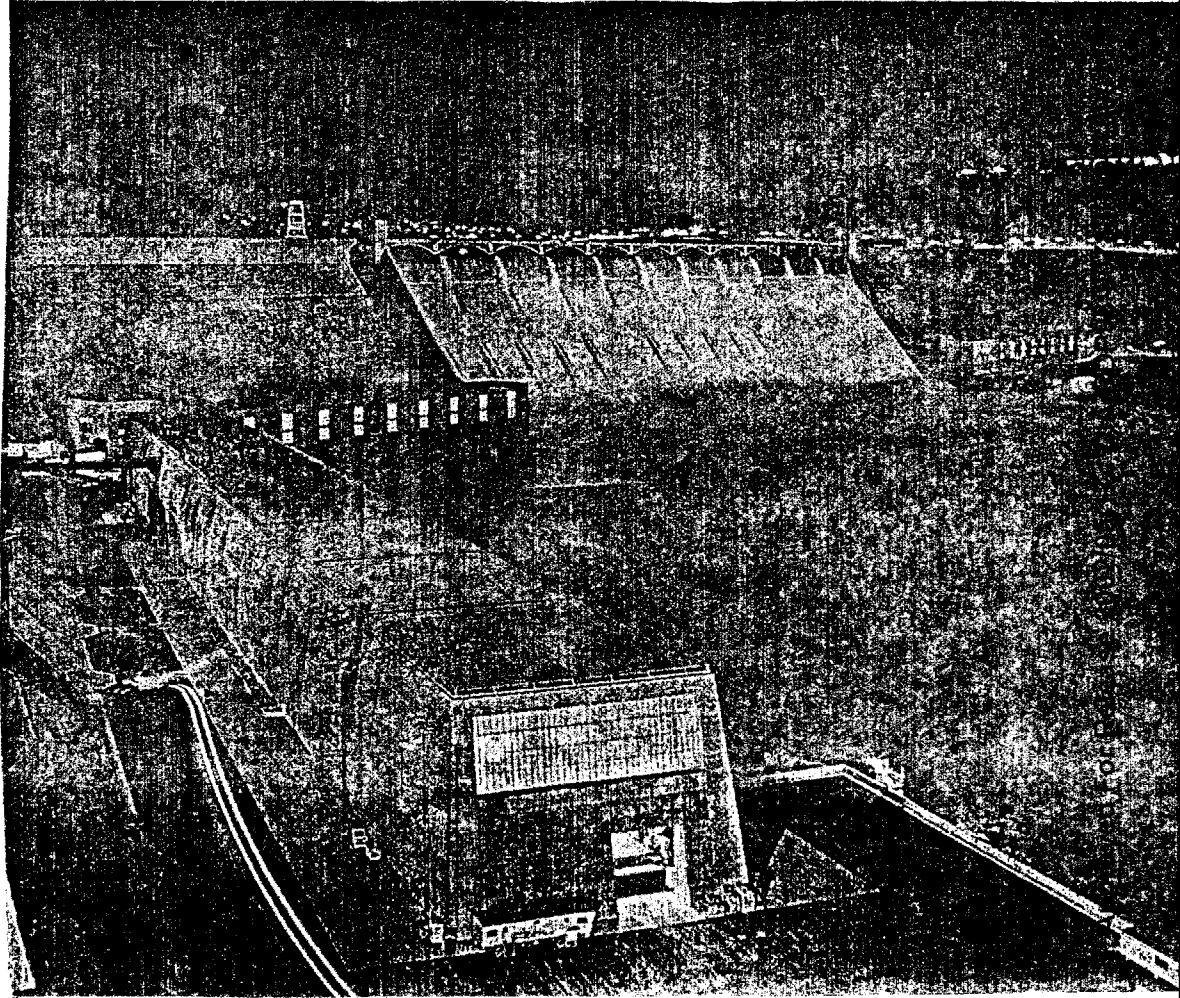
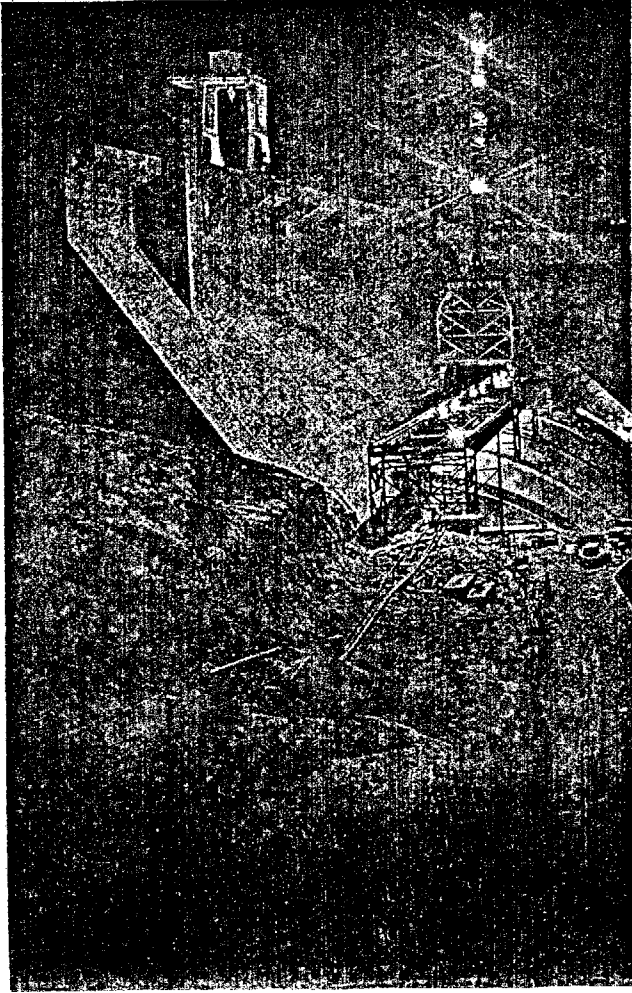
End



gress, Grand Coulee Dam, largest on the Columbia, drew acclaim as an eighth world when it was completed in 1942. Now construction worker Henry Beecher

helps build a third powerhouse (foreground), whose turbines will boost Grand Coulee's total output to 6,280,000 kilowatts, making it the world's No. 1 producer of hydroelectricity.

NATIONAL GEOGRAPHIC PHOTOGRAPHER JAMES P. BLAIR (BELOW)



TAB