

(Class B) SM

Paul
1 Feb 85
Ft. Meade, MD
Earth
10:34
Fred

0132
microwaves
storage, etc

SG1B



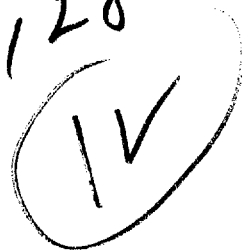
003
051

A. along Joss
round
solid

B. Structure

s-2
round
flat
neutral color
irregular
metallic
uneven
smooth
lined
cold

1034
1128



W

A. small uneven
solid material

B. Structure

A. rising uneven
solid

B.

100 BK mountain

SG1B



This document is made available through the declassification efforts
and research of John Greenewald, Jr., creator of:

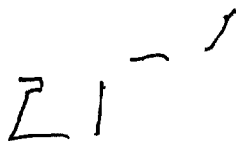
The Black Vault



The Black Vault is the largest online Freedom of Information Act (FOIA) document clearinghouse in the world. The research efforts here are responsible for the declassification of hundreds of thousands of pages released by the U.S. Government & Military.

Discover the Truth at: <http://www.theblackvault.com>

Inside structure should be perceptible



A. angle flat
hard
manmade

B. -

- S-2
- metallic
- hard
- smooth
- random sounds
- mechanical sounds
- flickering
- angular
- rounded
- different planes
- varying sizes
- large
- small
- oblong
- vertical
- A/Bk
- interesting place

S2 D AI EI F I AOK ALS

A/Bk
laundromat

machines electronic tracking

disks
screens
lights
computers

people technicians professional

board

lights

digital

green
white
cream color
flashes
red
blue
white
yellow

many

Side is a structure & contains electronic machinery involved in tracking; machinery exhibits dials, screens, many rapidly flashing lights of various colors. Machines are manned by professionals, technicians who are somewhat bored. Digital-equipment type sounds are present, having to do with telemetry.

AOL Bk
Missile n Satellite
tracking collection
Station

SG1B



A. confusion
work

~~~~~

SG1B



- A. around angle  
solid  
mammals
- B. building  
structure

S-2  
 regular shape  
 rectangular  
 red  
 warm

Brk

Site is a structure, rectangular shaped, red + warm.

inside structure should be visible.



- A. solid, curving  
flat mammals
- B. -

S-2  
 blank  
 white  
 flat  
 dark  
 green  
 glaring  
 quiet  
 complex  
 maze like  
 long  
 wide  
 arching  
 AI ~~structure~~  
 feeding

S-2

D  
Small  
odd shaped

AI

EI

T  
rooms

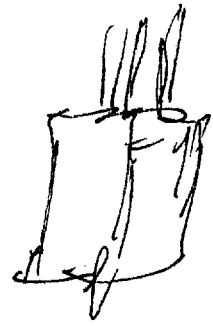
I

AOL ALS

white

on the  
walls

walls  
things  
hanging



AOL  
BX  
Electrical  
junction  
boxes

people  
reclining

AOL BX  
strange  
cushions

medium  
number

people  
beds  
chairs

AOL BX  
live dentist  
chairs

monitoring

glove

orange  
red

S-2  
pulsing

D

AZ

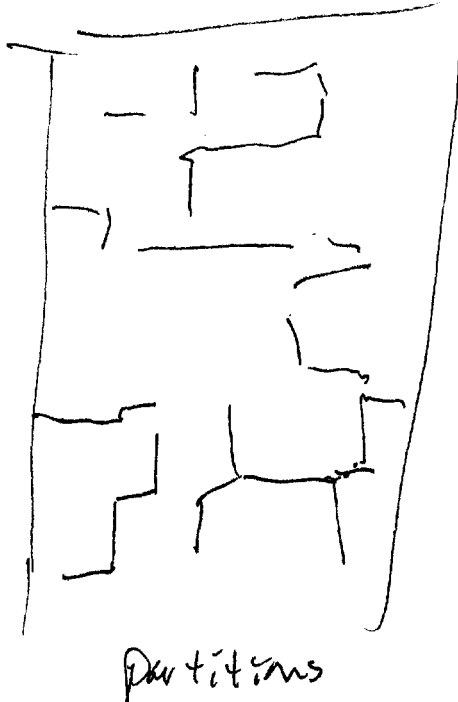
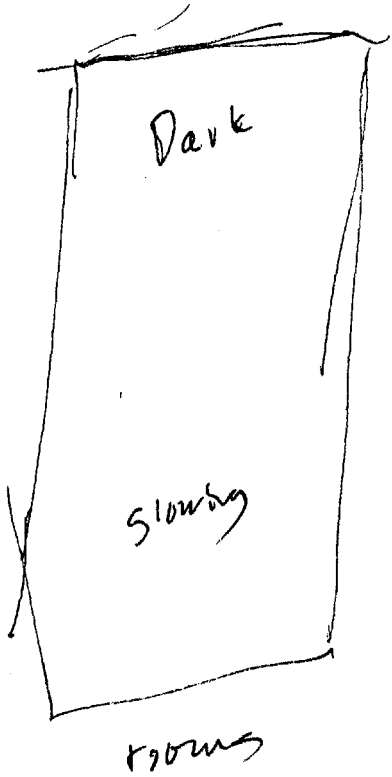
EI

T  
slow

I

ADL

MS



S-2

D

AI

EI

T

J

AVL

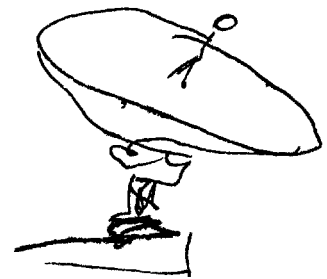
ALS

carbides

working  
area

AVL BLK  
office line

AVL BLK  
satellite  
dish





SG1B



- A. corner, flat  
solid  
manuscript
- B. Structure

J-2  
white  
sloping  
smooth  
regular  
rounded

inside structure something should be perceptible.



- A. rounded,  
sharp
- B. -

S-2  
white  
several  
low  
smooth  
draped  
crackling  
buzz  
quiet  
echos  
long  
divided  
stretching into distance  
AI BK  
Calm feeling

### Summary

Inside Site is white, long, divided, stretching into distance, and contains several relatively low, smooth, draped objects; Inside ~~Approved For Release 2000/08/08 : CIA-RDP96-00789R001700310001-9~~ present. Parts are dim or dark, with a few lighter areas.

Objects should be perceptible.



A. rounded, solid  
manmade

B. -

S-2

D

AI

EI

T

I

AVL

A/S

white

rounded  
low

hand  
cool  
smooth

pedestal

off the  
ground

flat

plastic  
metallic

solid

plastic  
metallic

can be  
opened

functional

stainless  
steel

folded

AVL Bk  
Milk bulk  
tank on a  
dairy  
farm

S-2 D AI EI T I AOL AS

strong  
swell  
burst  
gasoline  
smell  
swirling  
swirling  
fluctuating  
bubbling  
splashing  
extremely  
cold  
fizzy

liquid

~~humps~~

AOL BK  
liquid  
oxygen  
nitrogen tanks

humps

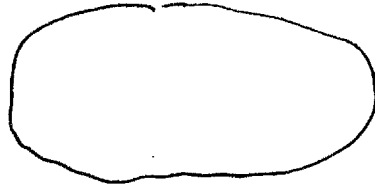
AOL BK  
like ice

smooth  
irregular  
not quite  
solid

AOL BK  
like half finished  
ice cream

S-2 D AI EI T I AUL ALS

object



S-2  
red  
warmer  
fluid  
salty  
stickier  
blue  
grainy

AUL Bk  
like sand

hot  
caustic

hot

stirring

AUL Break  
microscopic  
salts/phase  
change salts

orange

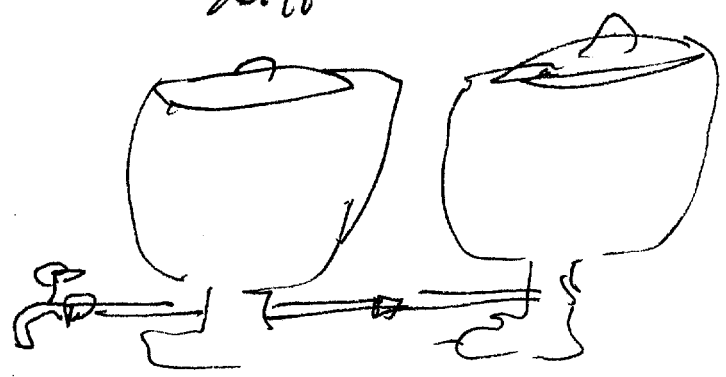
objects

connected  
associated  
dependent  
sensitivity to  
changes  
synthesis

BoL H/S

BoL Bk

It's like these  
objects are attached  
by conduits and  
their contents tapped  
to be combined to  
produce something  
different.

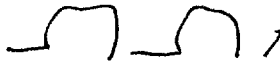


BoL Bk

Hydro-electric generating  
plant

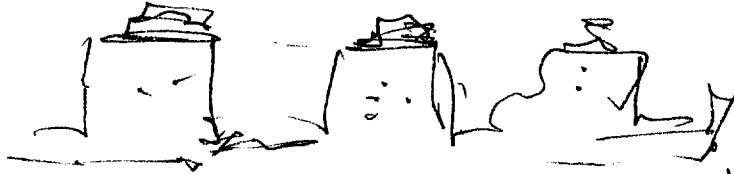


Objects in the structure should be perceptible.



A. sequenced  
solid  
w/flow  
cylindrical

B. -



in line

ranked  
in line

70L Break  
pumping  
station

Contents  
different

substance

70L Break  
electrical  
winding  
magnetic

end  
11:28

