

Paul
30 Oct 84
10:35

37° 15' 54" N
105° 19' 11" W.

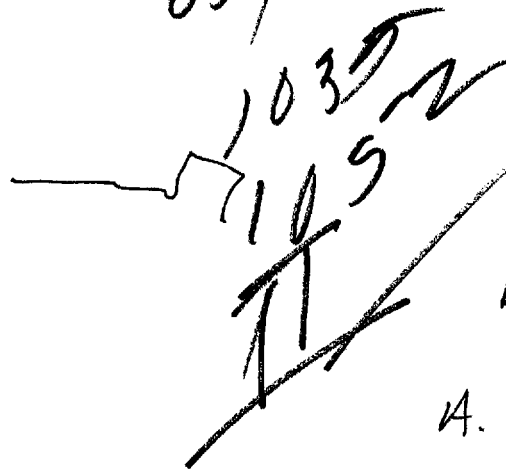


A. up and down

ADL Break
Volcano

003
05)

37° 15' 54" N.
105° 19' 11" W.



A. dark c
fluid
B. water

A. angle c
solid

B. building



Confusion break

37° 15' 54" N.
105° 19' 11" W



A. Confusion
break

Sand dunes

This document is made available through the declassification efforts
and research of John Greenewald, Jr., creator of:

The Black Vault



The Black Vault is the largest online Freedom of Information Act (FOIA)
document clearinghouse in the world. The research efforts here are
responsible for the declassification of hundreds of thousands of pages
released by the U.S. Government & Military.

Discover the Truth at: <http://www.theblackvault.com>

37° 15' 54" N.

105° 19' 11" W.



S-2

A. around pe
solid c

B. land c

Very brown pc

Slightly mounded c

bordered c

irregular pc

Clay pc

~~smooth~~ c

water c

green c

dark color c

undulating terrain c

Winding channels c

rocks ~~pc~~

cold c

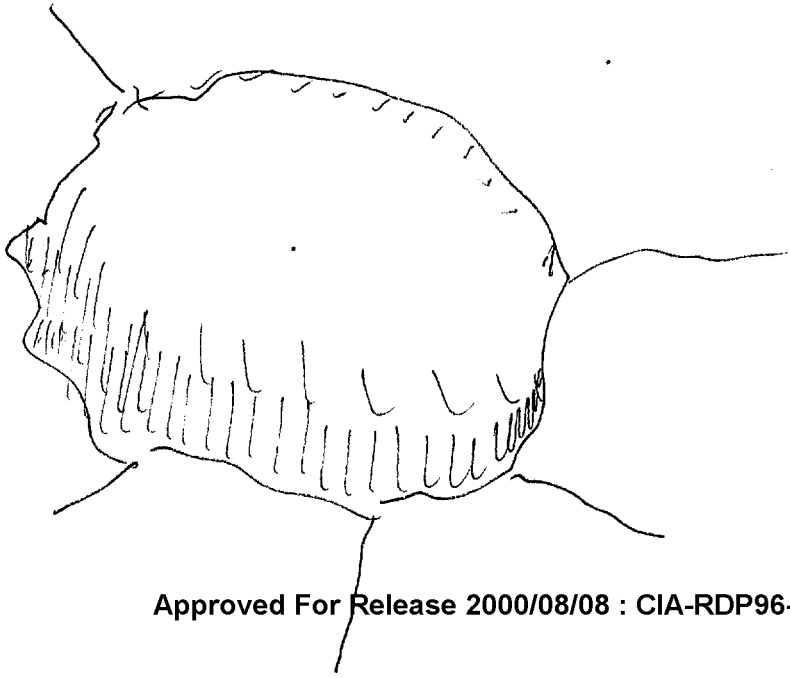
locking vegetation c

open c

wide expanse

flat

AI barren feeling



37° 15' 54" N.

105° 19' 11" W



S-2

projecting pe
raised c
flat c
rounded pe
bluff rfr
light color c

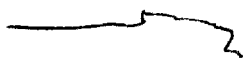
A curving land
solid r

B. -

Adv Break
glacier

37° 15' 54" N.

105° 19' 11" W.



S-2

rising pe
flat c
white c
regular pe
gravelly c

A. across
land c

B. -

Adv Break
Tiptield



37° 15' 54" N.

105° 19' 11" W




S-2
black rrc
angular rrc

A. across
flat
B. land c

A. curving back
SOLID
B.-

ALL Break
coal outcropp. by

37° 15' 54" N.

105° 19' 11" W 

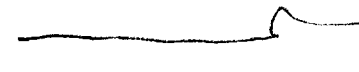
S-2

A. cross up
hard c

B.

Asl Break
mesa
Indian Ruins

37° 15' 54" N.

105° 19' 11" W. 

S-2

grey c
concrete
flat c
pebbly c
red c
pink c
orange pe
wind rounded pe
dry c
sandy c
whitish pe
granular surface
sandstone
molded c

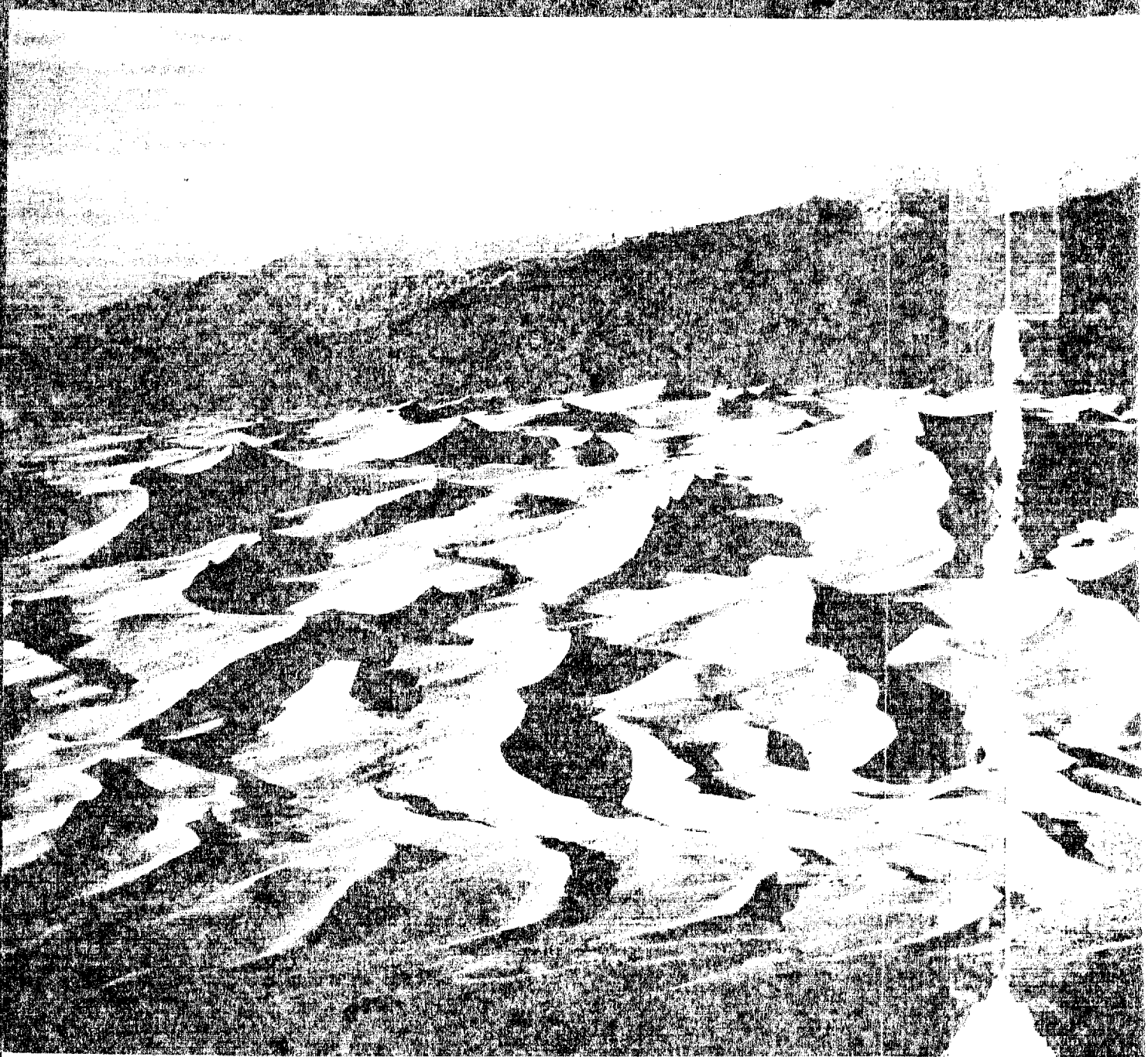
A. cross up
solid

B.

Asl Break
Sandstone formation

end

Sandstone formation



Worthy companion to the Sangre de Cristo Mountains, Great Sand Dunes National Monument evokes its own ever changing, majesty as it blankets an area

of 50 square miles as has

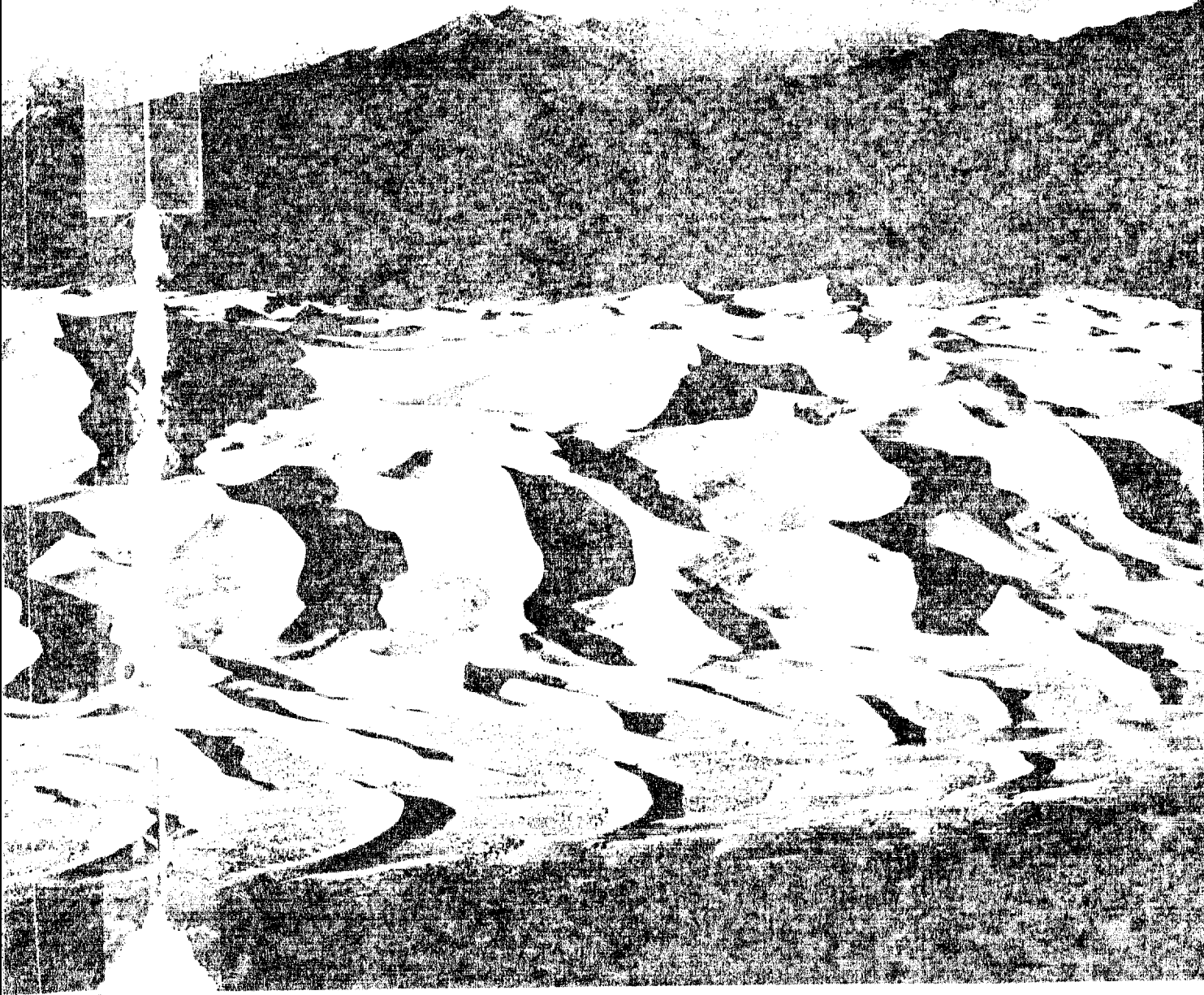
and built a refinery to extract shale oil. The 650-million-dollar investment is partly offset by a contract with the government to provide oil for defense use. Union may learn much that will help make shale viable — someday.

THERE'S A CAFE in Maybell and a gas station where you can fill up. In far northwest Colorado these are amenities not to be lightly regarded. And

between Maybell and the Utah line, 62 miles on Highway 518, there's not much else.

I took that road to the northern end of Dinosaur National Monument and camped by the Green River. This is a few miles downriver from Browns Park, where Butch Cassidy and his gang sometimes hid when not robbing banks. Blessed with abundant grass, Browns Park also was a gathering place for Indians. In the late 1830s it held a

small fire. Browns Park is the site of the first evidence of charcoal that traps carbon. "I'll" is offered. clay of coal. Gl



at 10 square miles. Upon discovering the dishes in 1950, explorer Zohdan M. P. He described them as having an appearance similar to the dishes of a microwave oven.

small fur trading post, Fort Dev. A local
Park ranger Gilade Ross wandered onto
the short lived fort, stood amid a lot of
evidence beside the Green. He noted
charcoal, chunks of iron, and other
that trappers traded to Indians in
"I'll show you where it was," Ad
offered. Soon we were slip, hitting
clay of the riverbank, then me
and Gilade in ported the

sometimes you can still find a bear," he
said. Then, "I find, I see one." A tiny
of an unworked iron and the gravel
Gilade slipped on in shirt and with
in a river, he had fallen into the water. He
and had but not of the bundle was just
could be mine. It had went out in the
in the river. "That's Colorado for you,"
a
[]

Colorado Discovery

CPYRGHT