

SESSION INFORMATION

A. TARGET DATA:

Date: 8 Mar93
Task/Target Number: 93-172-P
Session Number:

B. PERSONNEL DATA:

Source Number: 079
Monitor Number:
Beacon/Sender No:

C. SESSION DATA:

Session Start Time: 1145
Session Stop Time: 1220
Method Used: Solo
Aids/Distractions (PIs):
Pre-sessions Hunches:
Date Summary Returned: 8 Mar 93

D. EVALUATION DATA:

Viewer Confidence (H/M/L):
Evaluator's Estimate:

E. SESSION SUMMARY:

Site has a structure that is very large and square. This structure has openness to it. The site has long pointed objects on top and on the sides it has circular or rounded objects. It looks as though the structure has columns. The structure is artistic and creative.

It can get busy at the site. One can see women, men, and children.

The site has blue, gold, green, and some white to it.

This structure is old. I sensed a past history associated with it.

Communications are associated with the site.

I kept getting the feeling of "reflection/reflecting."

This document is made available through the declassification efforts
and research of John Greenewald, Jr., creator of:

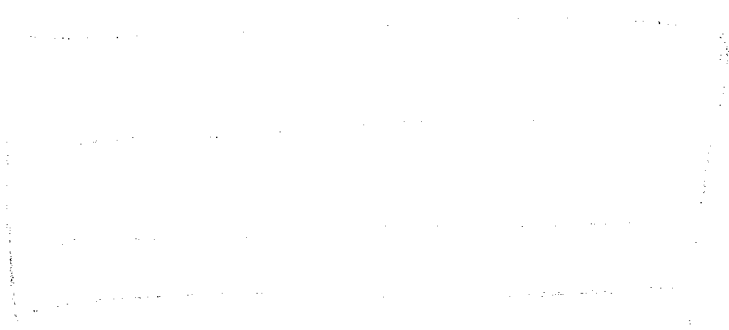
The Black Vault



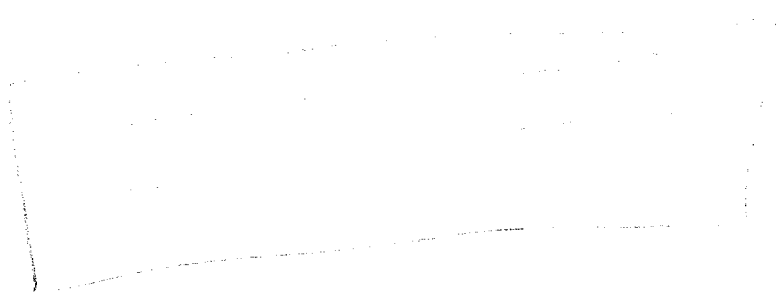
The Black Vault is the largest online Freedom of Information Act (FOIA) document clearinghouse in the world. The research efforts here are responsible for the declassification of hundreds of thousands of pages released by the U.S. Government & Military.

Discover the Truth at: <http://www.theblackvault.com>

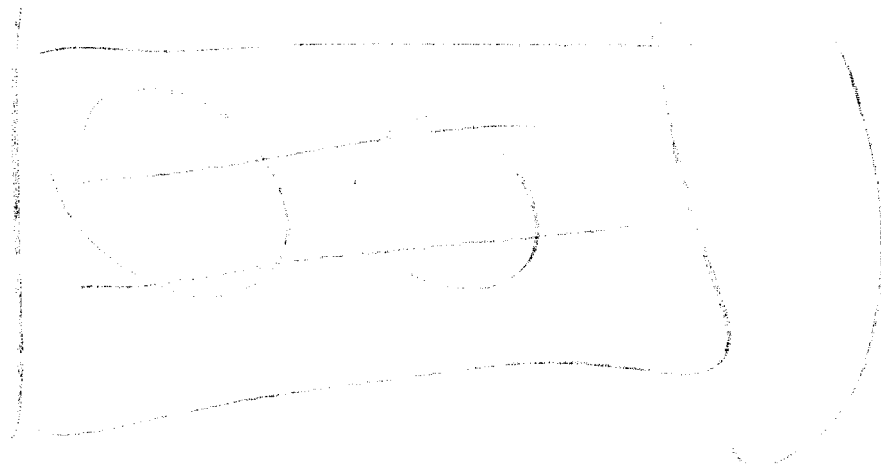
Columns



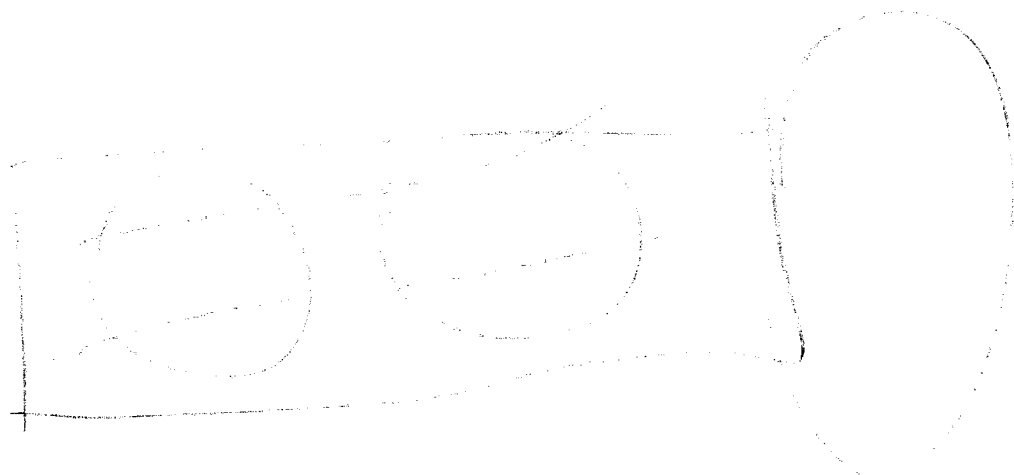
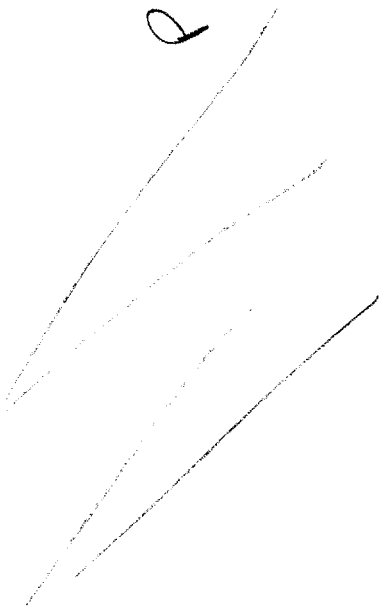
Structure

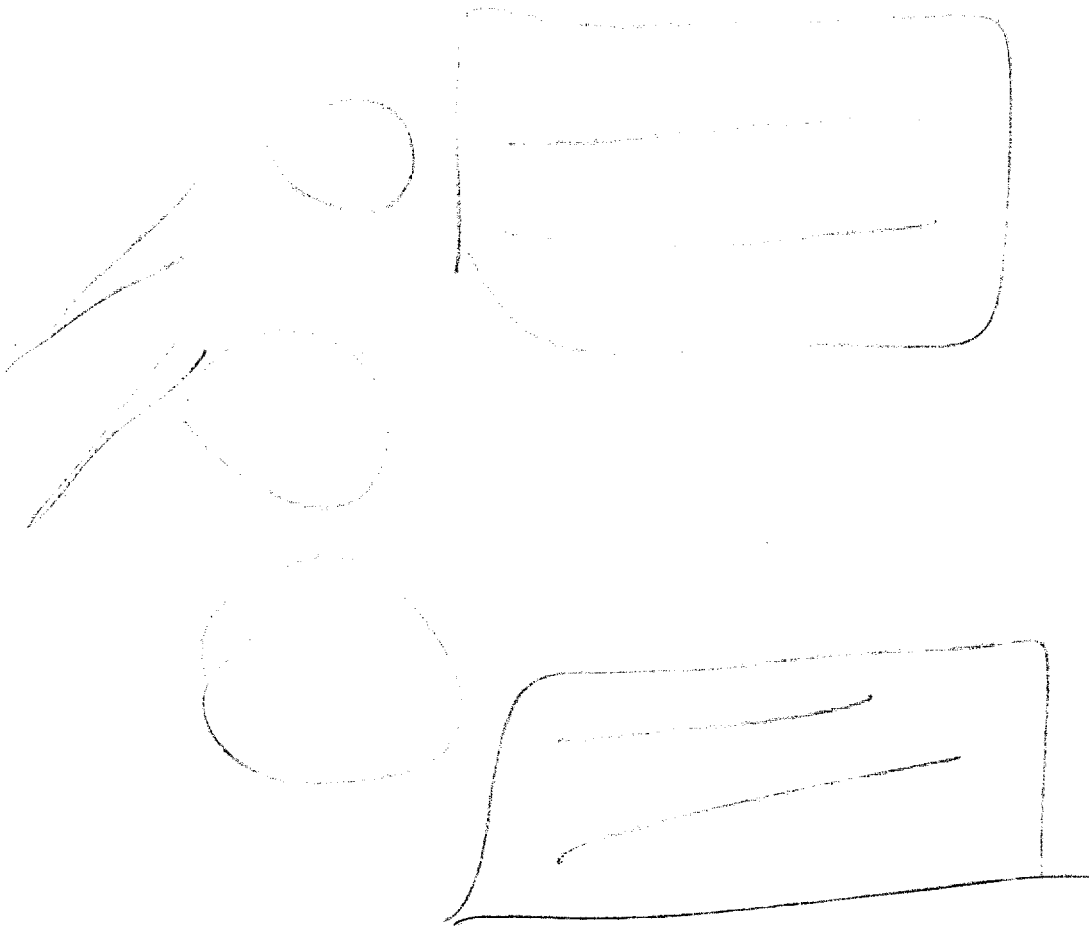


Painted objects



Structure





Site

CPYRGHT



Helmut Jahn's Xerox Centre, Chicago, emphasizes pattern and curve, has skin of aluminum and glass.

V values

1. Conceptual / Generic

a. Blue/white

b. circular connector to two wires

c. commercial enterprise

2. Analytical / Specific

a. Aluminum/Glass frontage.

b. 14 Stories

c. Technological / Business Center.

d. Machine(s)

TASKING SHEET

SOURCE NO: 079

DATE: 5 MAR 93

SUSPENSE: 8 MAR 93

1200

1. PROJECT NUMBER: 93-172-P

2. METHOD/TECHNIQUE: Method of choice.

3. BACKGROUND: This project is a continuation of a proficiency series targeting "structures/configurations,"

----These configurations can be anything. However, buildings/structures will be dominant.

----Targets will emphasize key elements that are unique or distinct. They will be composed of specific shapes, contours, and configurations. Some targets may have multiple similar shapes/features

----Targets may be of a commercial, governmental, or military. They may be either historic or contemporary.

4. ESSENTIAL ELEMENTS OF INFORMATION:

----Describe/sketch the key features/shapes/contours of the target.

----Describe/sketch the spatial relationships or relative sizes of the target features.

----Determine other features such as colors and predominant backgrounds.

----Determine the purpose of the target structures.

COMMENTS:

----This target ~~is~~/does not have a beacon person.

----Optional Coordinates: 271638/140270